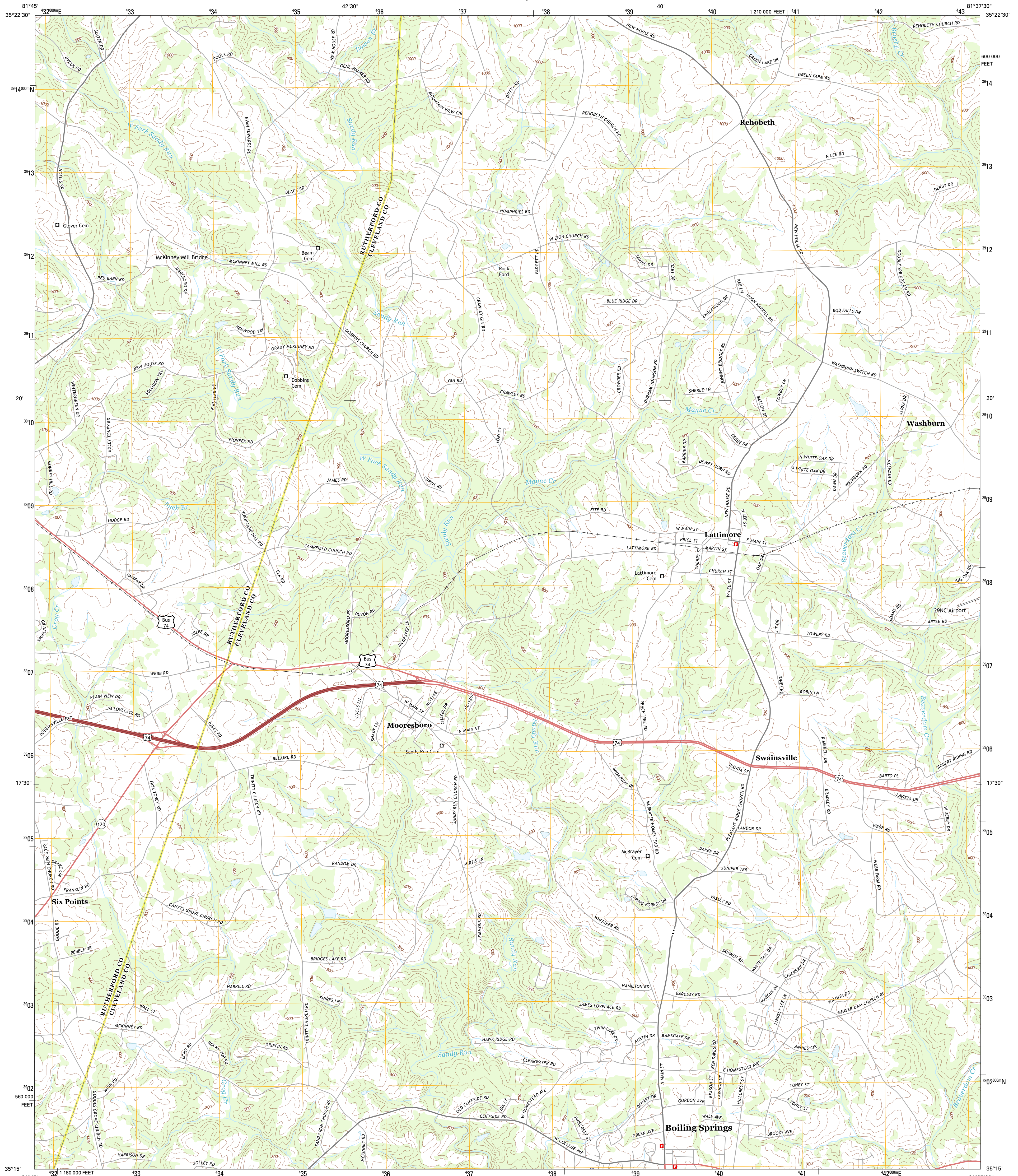




U.S. DEPARTMENT OF THE INTERIOR
U. S. GEOLOGICAL SURVEY



BOILING SPRINGS NORTH QUADRANGLE
NORTH CAROLINA
7.5-MINUTE SERIES

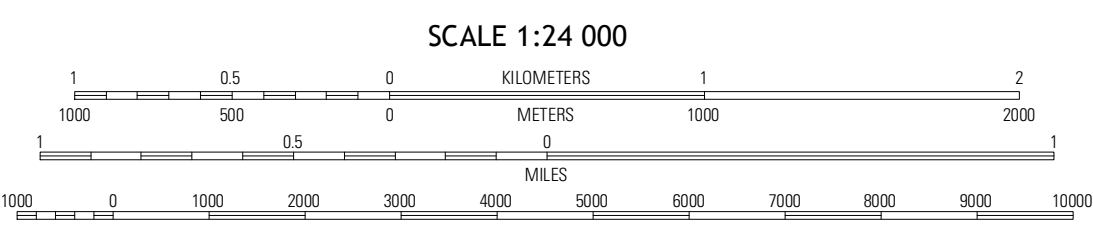


Produced by the United States Geological Survey
North American Datum of 1983 (NAD83)
World Geodetic System of 1984 (WGS84). Projection and
1 000-meter grid: Universal Transverse Mercator, Zone 17S
10 000-foot ticks: North Carolina Coordinate System of 1983

UTM GRID AND 2013 MAGNETIC NORTH DECLINATION AT CENTER OF SHEET

6° 57' 12.3" N
123 MILS
0° 24' 0" N

U.S. National Grid
100,000-m Square ID
MV
Grid Zone Designation
17S



QUADRANGLE LOCATION

Shelby	Polkville	Lawndale
Forest City	Boiling Springs North	Shelby
Cherokee	Boiling Springs South	Blackburg North
		Blackburg South

ROAD CLASSIFICATION

	Expressway		Local Connector
	Secondary Hwy		Local Road
	Ramp		4WD
	Interstate Route		US Route
			State Route

CONTOUR INTERVAL 20 FEET
NORTH AMERICAN VERTICAL DATUM OF 1988

This map was produced to conform with the National Geospatial Program US Topo Product Standard, 2011. A metadata file associated with this product is draft version 0.6.11

BOILING SPRINGS NORTH, NC
2013