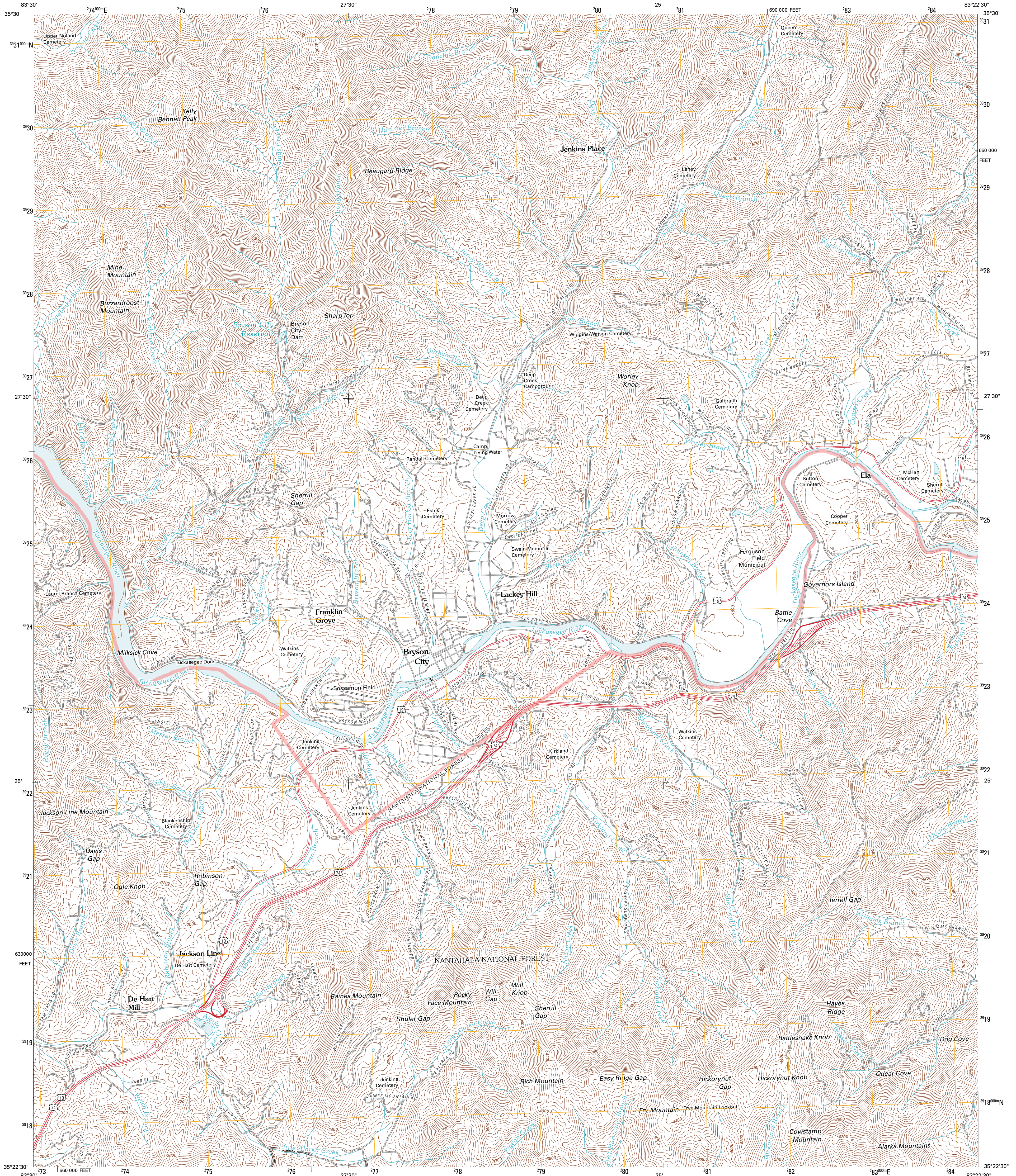




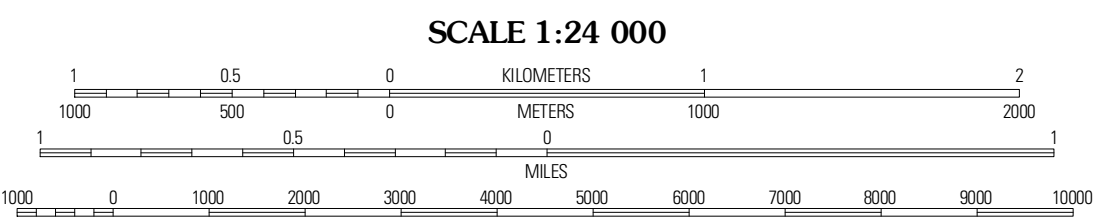
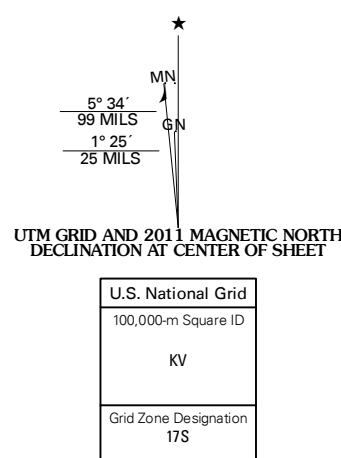
U.S. DEPARTMENT OF THE INTERIOR
U. S. GEOLOGICAL SURVEY



BRYSON CITY QUADRANGLE
NORTH CAROLINA
7.5-MINUTE SERIES



Produced by the United States Geological Survey
North American Datum of 1983 (NAD83)
World Geodetic System of 1984 (WGS84) Projection and
1 000-meter grid; Universal Transverse Mercator, Zone 17S
10 000-foot ticks: North Carolina Coordinate System of 1983

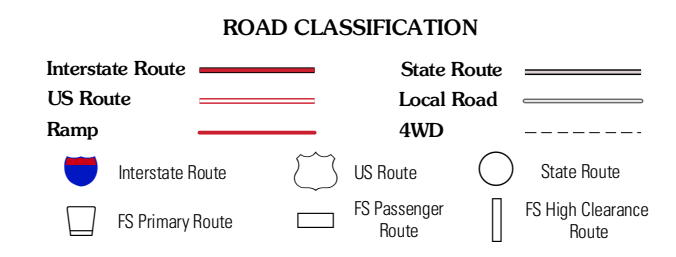


CONTOUR INTERVAL 40 FEET
NORTH AMERICAN VERTICAL DATUM OF 1988
This map was produced to conform with version 0.5.10 of the
draft USGS Standards for 7.5-Minute Quadrangle Maps.
A metadata file associated with this product is draft version 0.5.12



QUADRANGLE LOCATION

Slicks Bald	Chingmans Dome	Smokemont
Noland Creek	Bryson City	Whittier
Wesser	Alarka	Greens Creek



Check with local Forest Service unit
for current travel conditions and restrictions.

BRYSON CITY, NC
2011

ADJOINING 7.5 QUADRANGLES

Imagery:.....NAP, October 2009
Roads:.....©2006-2010 Tele Atlas
Roads within US Forest Service Lands:.....FS Topo Data
with limited Forest Service updates, 2009
Names:.....GNIS, 2010
Hydrography:.....National Hydrography Dataset, 2009
Contours:.....National Elevation Dataset, 2008