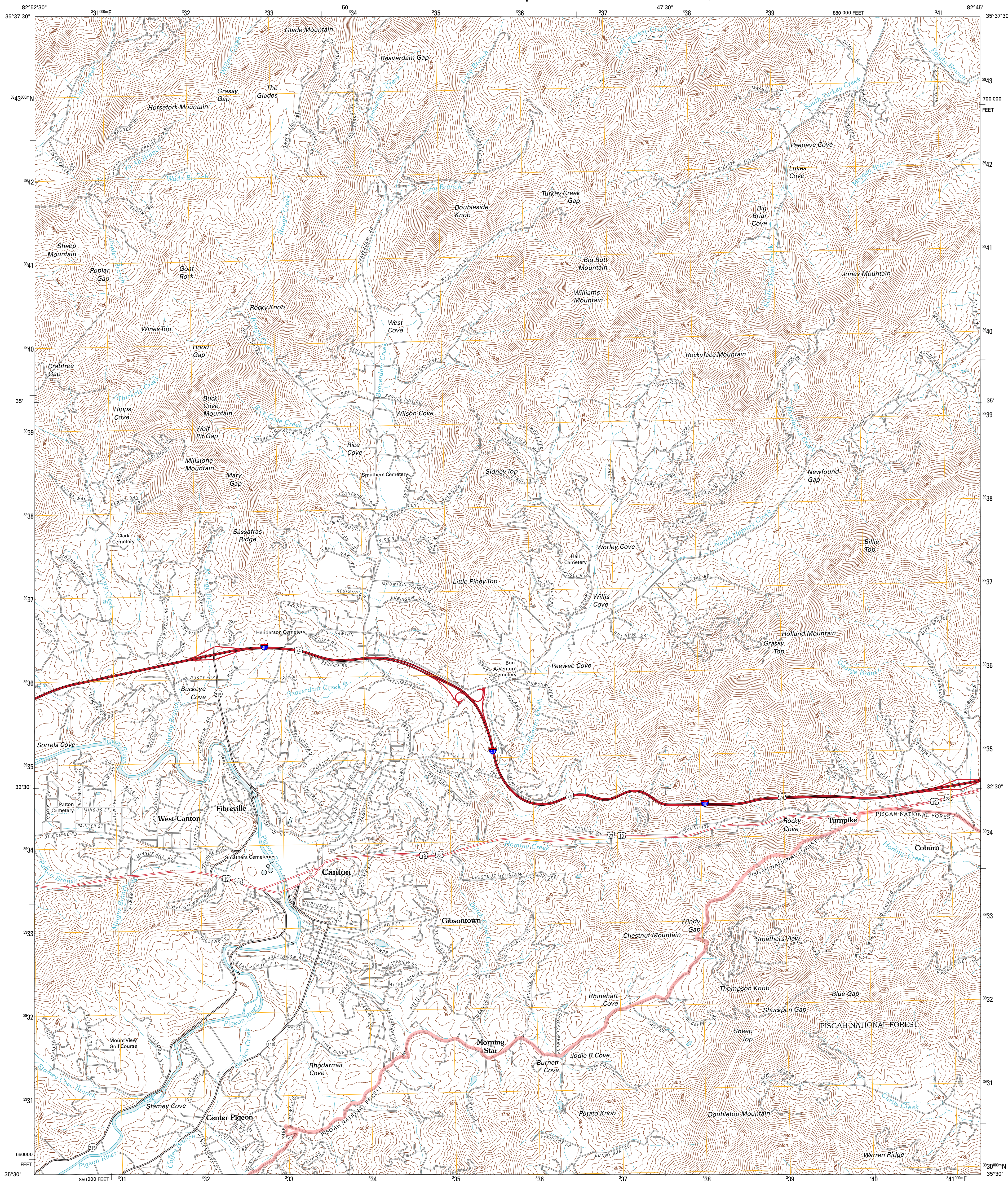




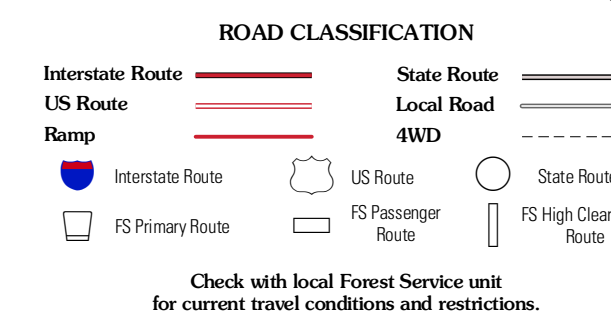
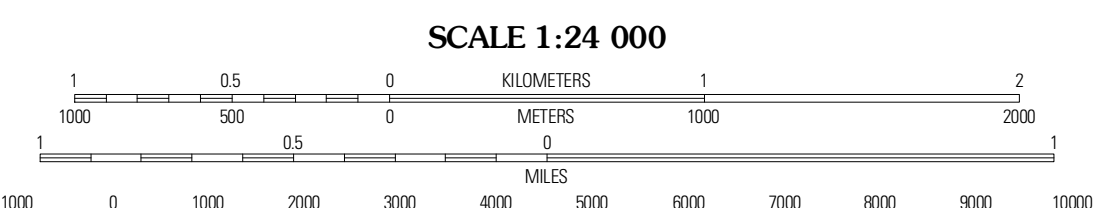
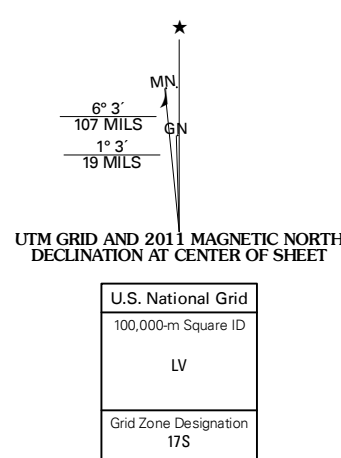
U.S. DEPARTMENT OF THE INTERIOR  
U. S. GEOLOGICAL SURVEY



CANTON QUADRANGLE  
NORTH CAROLINA  
7.5-MINUTE SERIES



Produced by the United States Geological Survey  
North American Datum of 1983 (NAD83)  
World Geodetic System of 1984 (WGS84). Projection and  
1 000-meter grid: Universal Transverse Mercator, Zone 17S  
10 000-foot ticks: North Carolina Coordinate System of 1983



Imagery:.....NAP, October 2009  
Roads:.....©2006-2010 Tele Atlas  
Roads within US Forest Service Lands:.....FS Topo Data  
with limited Forest Service updates, 2009  
Names:.....©2010 GNS, 2010  
Hydrography:.....National Hydrography Dataset, 2009  
Contours:.....National Elevation Dataset, 2008

CONTOUR INTERVAL 40 FEET  
NORTH AMERICAN VERTICAL DATUM OF 1988

This map was produced to conform with version 0.5.10 of the  
draft USGS Standards for 7.5-Minute Quadrangle Maps.  
A metadata file associated with this product is draft version 0.5.12

Fines Creek	Sandywash	Lester
Clyde	Canton	Enka
Waynesville	Crao	Danmore Mountain

ADJOINING 7.5' QUADRANGLES

CANTON, NC  
2011