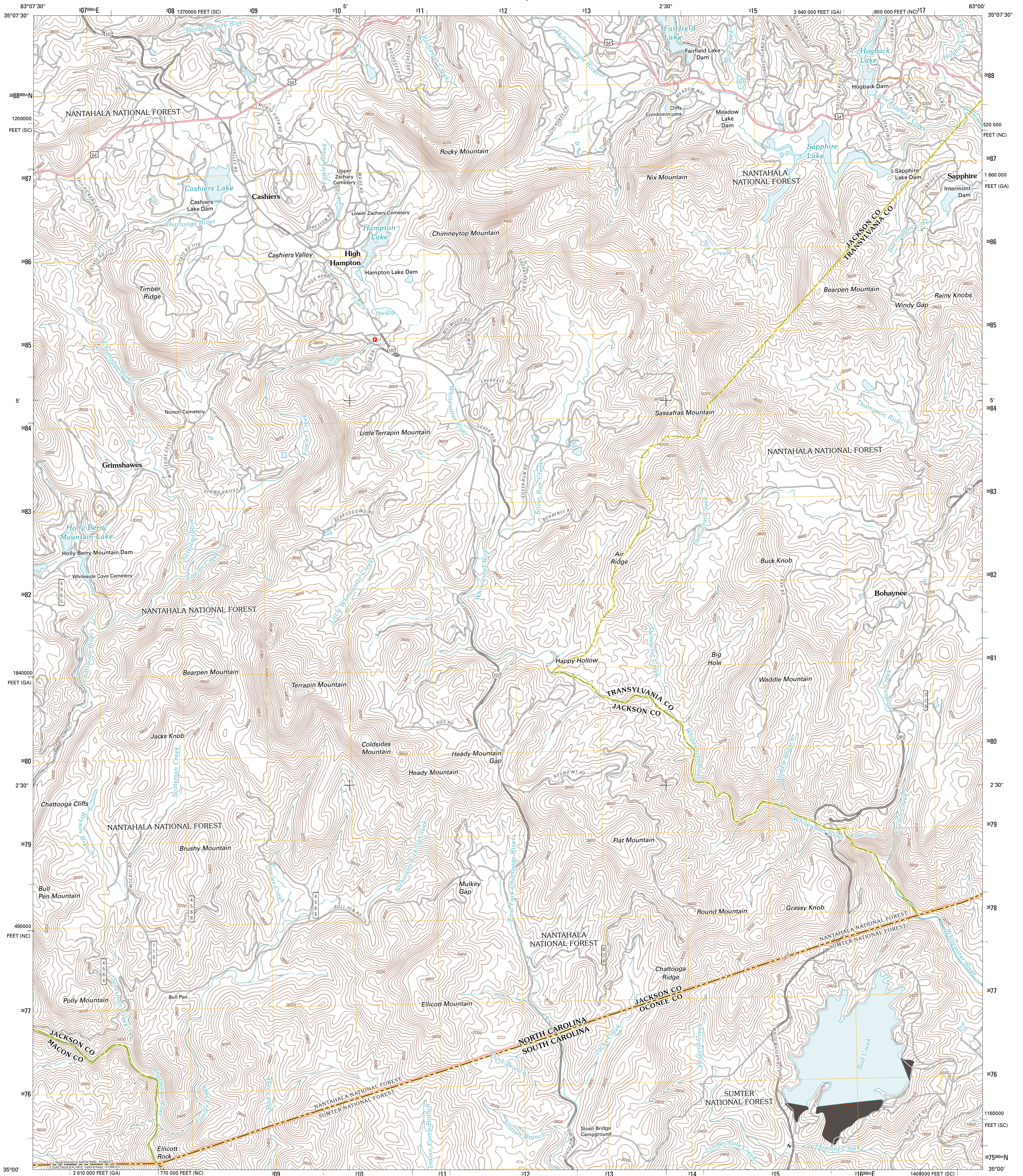




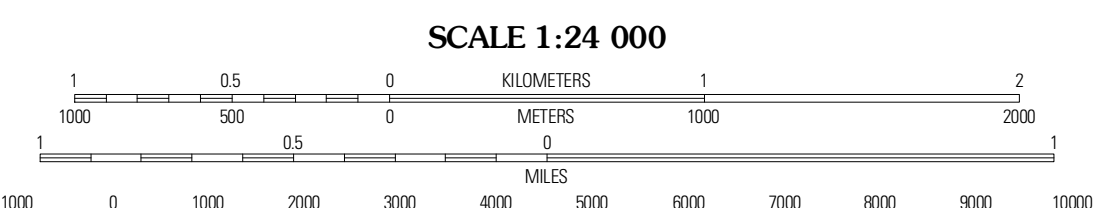
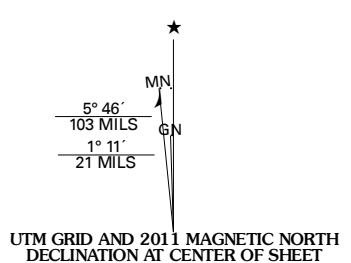
U.S. DEPARTMENT OF THE INTERIOR
U. S. GEOLOGICAL SURVEY



CASHIERS QUADRANGLE
NORTH CAROLINA-SOUTH CAROLINA-GEORGIA
7.5-MINUTE SERIES



Produced by the United States Geological Survey
North American Datum of 1983 (NAD83)
World Geodetic System of 1984 (WGS84). Projection and
1 000-meter grid; Universal Transverse Mercator, Zone 17S
10 000-foot ticks: North Carolina Coordinate System of
1983, South Carolina Coordinate System of 1983, Georgia
Coordinate System of 1983 (west zone)



CONTOUR INTERVAL 40 FEET
NORTH AMERICAN VERTICAL DATUM OF 1988
This map was produced to conform with version 0.5.10
of the USGS US Topo Product Standard.
A metadata file associated with this product is draft version 0.5.16

ROAD CLASSIFICATION

Interstate Route	State Route
US Route	Local Road
Interstate Ramp	4WD
FS Primary Route	US Route
FS Passenger Route	State Route
FS High Clearance Route	

Check with local Forest Service unit for current travel conditions and restrictions.

QUADRANGLE LOCATION

Glennville	Big Ridge	Lake Toxaway
Highlands	Cashiers	Reid
Satohk	Tamassee	Salem

ADJOINING 7.5 QUADRANGLES

Imagery:.....NAIP, October 2009
Roads:.....©2006-2010 Tele Atlas
Roads within US Forest Service Lands:.....FSTopo Data with limited Forest Service updates, 2009
Names:.....©2009-2010 GNS, 2010
Hydrography:.....National Hydrography Dataset, 2009
Contours:.....National Elevation Dataset, 2010
Boundaries:.....Census, IBWC, IBC, USGS, 1972 - 2010

U.S. National Grid
100,000-m Square ID
LU
Grid Zone Designation
17S

CASHIERS, NC-SC-GA
2011