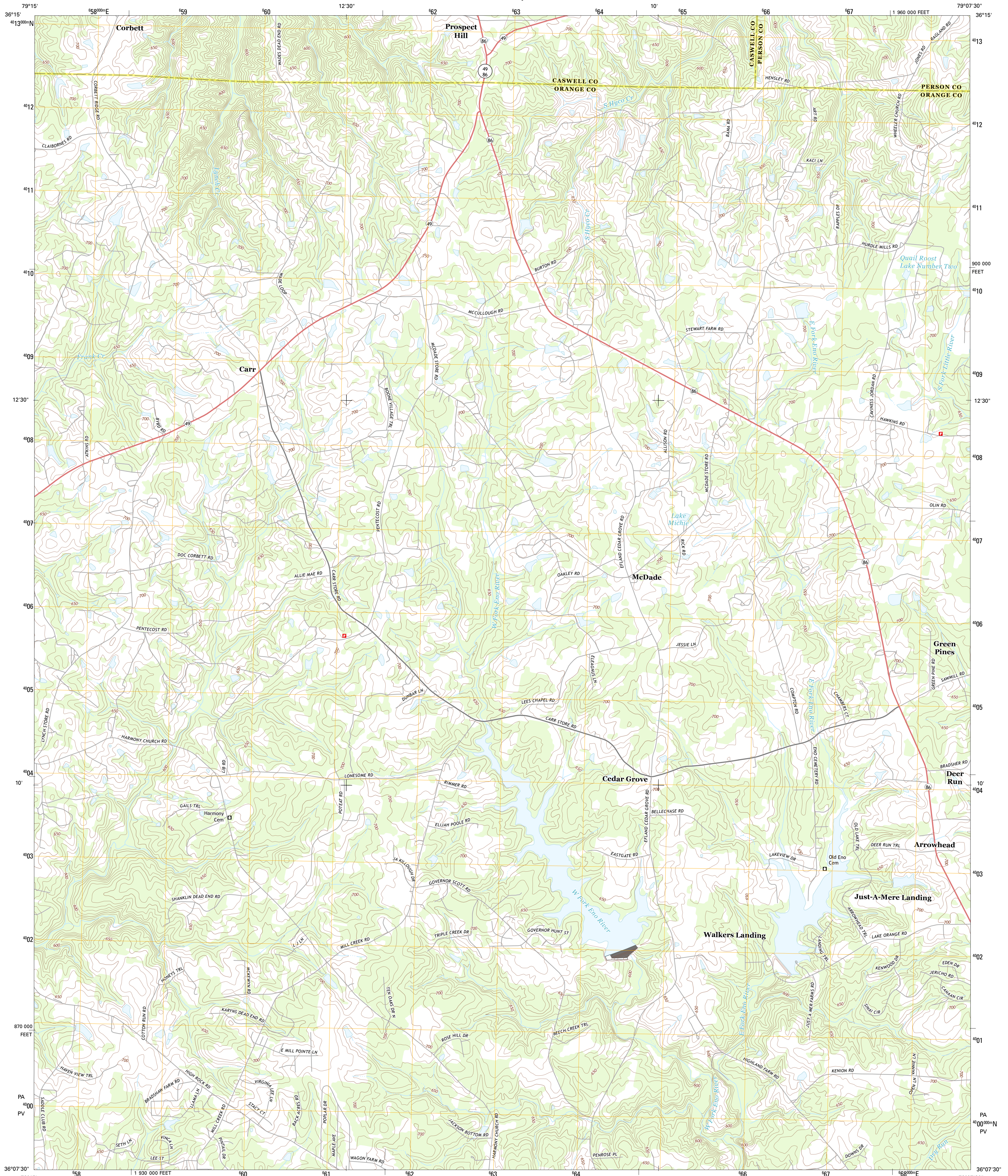




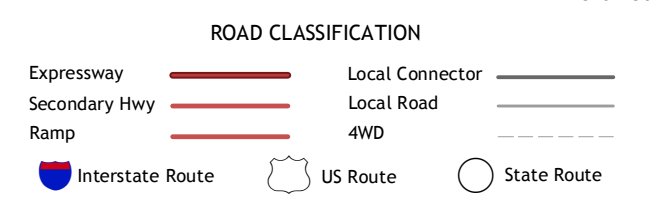
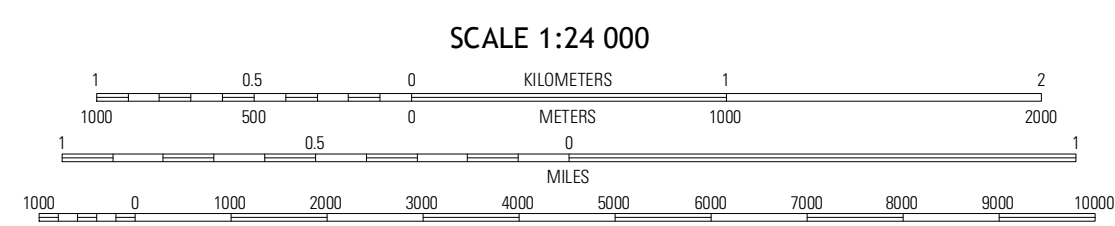
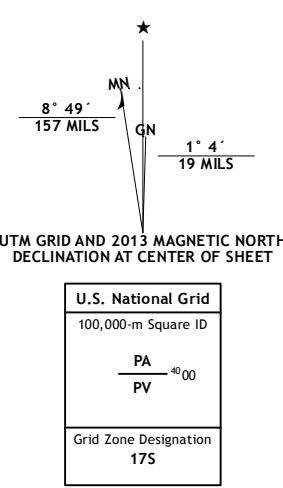
U.S. DEPARTMENT OF THE INTERIOR
U. S. GEOLOGICAL SURVEY



CEDAR GROVE QUADRANGLE
NORTH CAROLINA
7.5-MINUTE SERIES



Produced by the United States Geological Survey
North American Datum of 1983 (NAD83)
World Geodetic System of 1984 (WGS84) Projection and
1 000-meter grid: Universal Transverse Mercator, Zone 17S
10 000-foot ticks: North Carolina Coordinate System of 1983



QUADRANGLE LOCATION

Anderson	Ridgeville	Hurdle Mills
Burlington NE	Cedar Grove	Caldwell
Mebane	Elland	Hillsborough

Imagery: N.A.I.P., May 2012
Roads: ©2006-2012 TomTom
Names: G.NIS, 2013
Hydrography: National Hydrography Dataset, 2012
Contours: National Elevation Dataset, 2008
Boundaries: Census, IBWC, IBC, USGS, 1972 - 2012

CONTOUR INTERVAL 10 FEET
NORTH AMERICAN VERTICAL DATUM OF 1988
This map was produced to conform with the
National Geospatial Program US Topo Product Standard, 2011.
A metadata file associated with this product is draft version 0.6.11

CEDAR GROVE, NC
2013

ADJOINING 7.5 QUADRANGLES