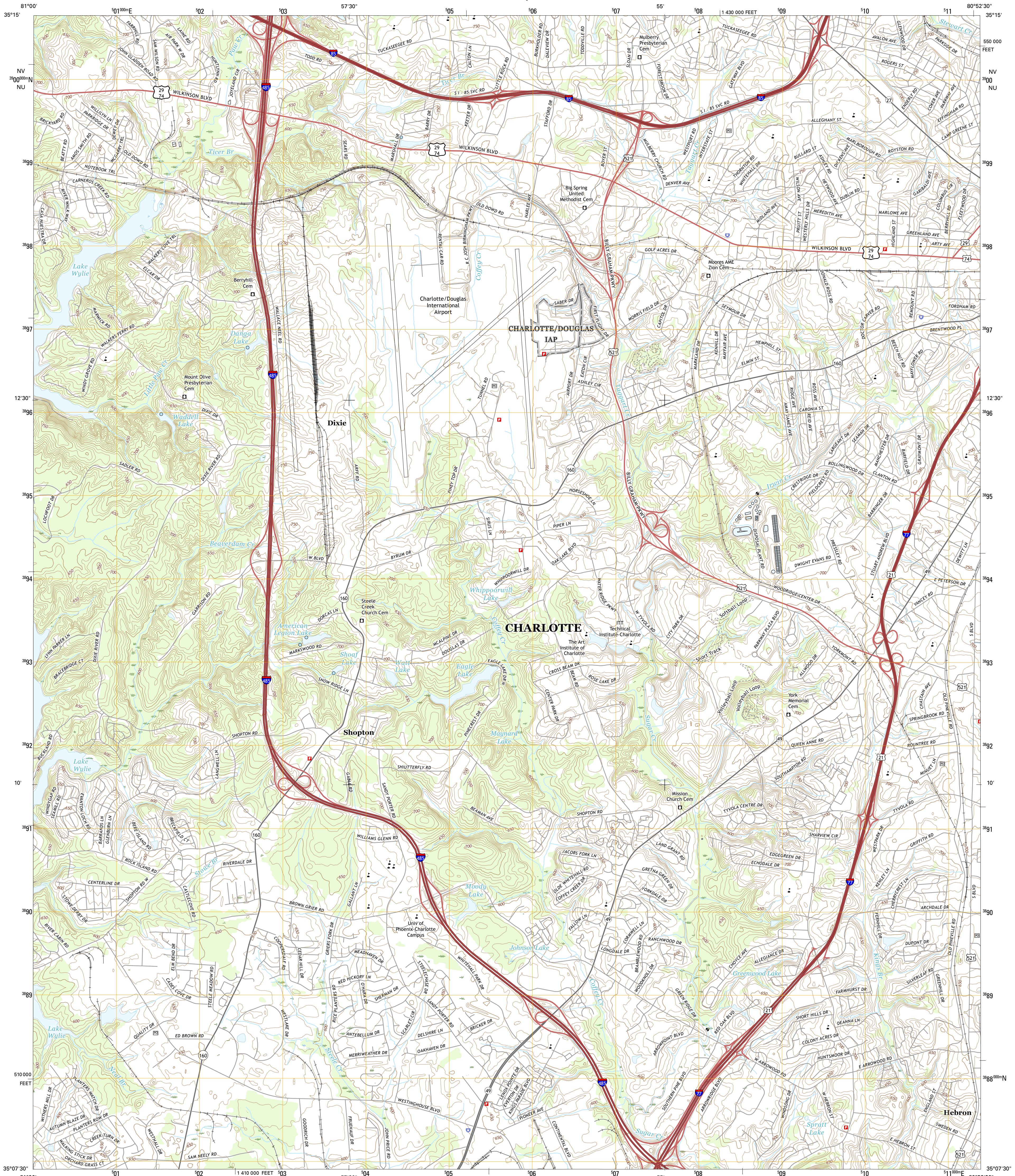




U.S. DEPARTMENT OF THE INTERIOR  
U.S. GEOLOGICAL SURVEY



CHARLOTTE WEST QUADRANGLE  
NORTH CAROLINA-MECKLENBURG CO.  
7.5-MINUTE SERIES



Produced by the United States Geological Survey  
North American Datum of 1983 (NAD83)  
World Geodetic System of 1984 (WGS84) Projection and  
1 000-foot grid: Universal Transverse Mercator, Zone 17S  
10 000-foot ticks: North Carolina Coordinate System of 1983

This map is not a legal document. Boundaries may be generalized for this map scale. Private lands within government reservations may not be shown. Obtain permission before entering private lands.

Imagery:.....NAP, June 2014  
Roads:.....U.S. Census Bureau, 2015 - 2016  
Names:.....GNIS, 2016  
Hydrography:.....National Hydrography Dataset, 2014  
Contours:.....National Elevation Dataset, 2008  
Boundaries:.....Multiple sources; see metadata file 1972 - 2016  
Wetlands:.....FWS National Wetlands Inventory 1977 - 2014

