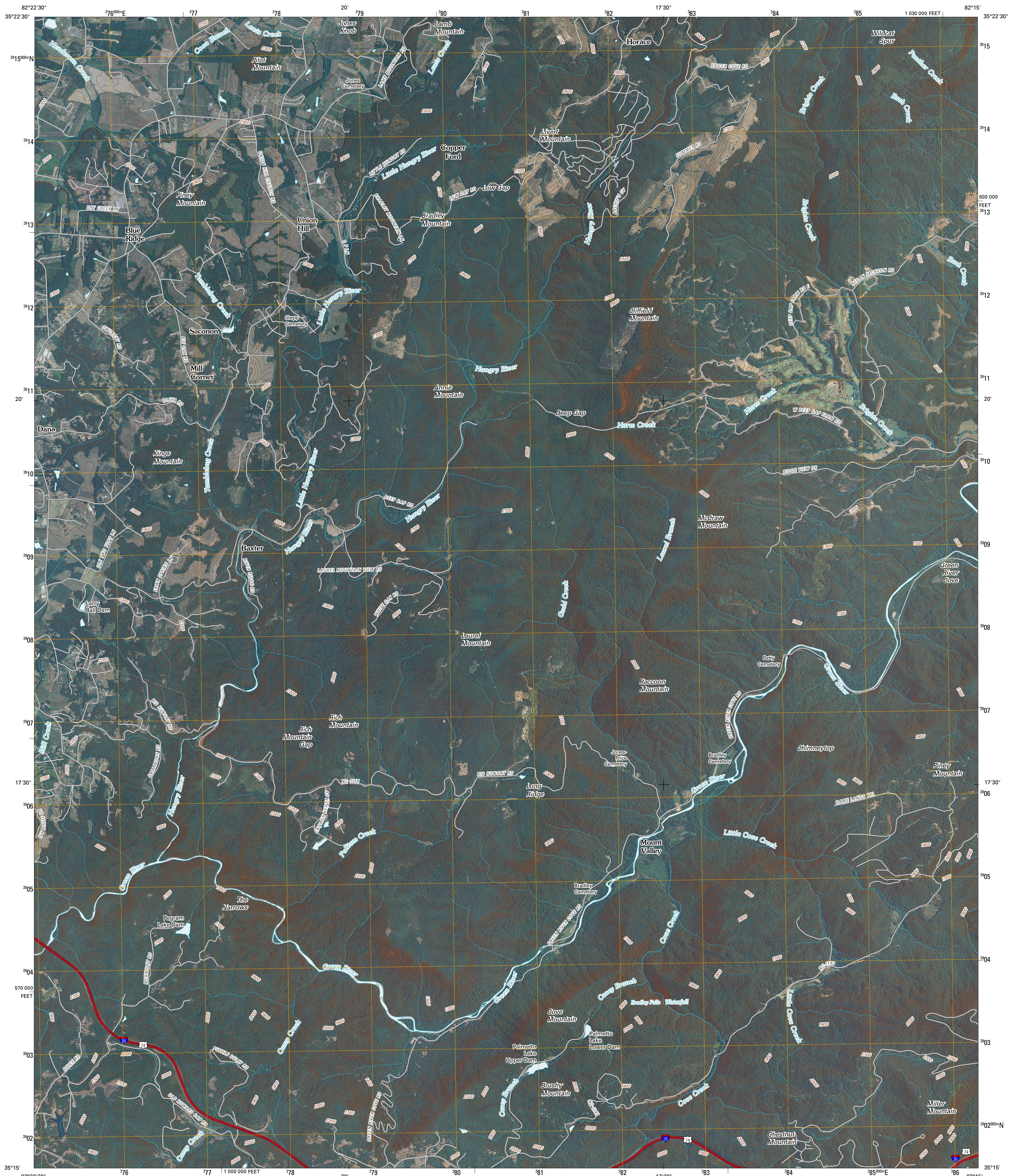




U.S. DEPARTMENT OF THE INTERIOR
U. S. GEOLOGICAL SURVEY

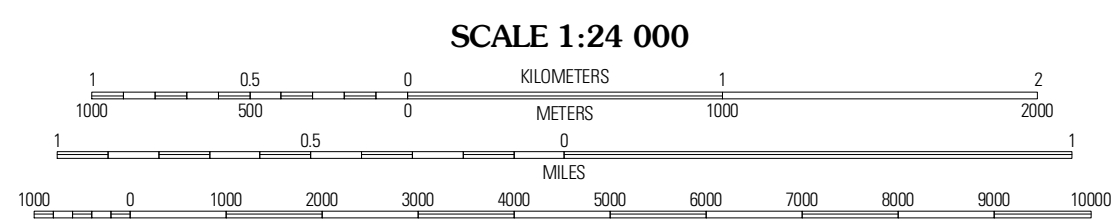
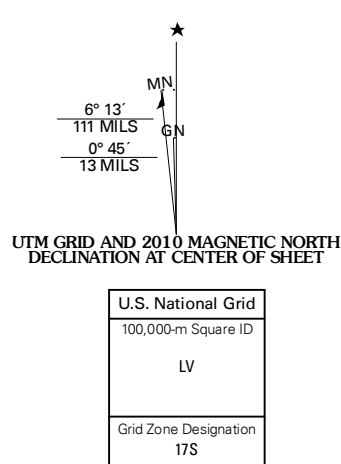


CLIFFFIELD MOUNTAIN QUADRANGLE
NORTH CAROLINA
7.5-MINUTE SERIES



Produced by the United States Geological Survey
North American Datum of 1983 (NAD83)
World Geodetic System of 1984 (WGS84) Projection and
1 000-meter grid; Universal Transverse Mercator, Zone 17S
10 000-foot ticks: North Carolina Coordinate System of 1983

Imagery: NGA, June 2008
Roads: 2006-2010 Tele Atlas
Names: GNS, 2008
Hydrography: National Hydrography Dataset, 2008
Contours: National Elevation Dataset, 2008



CONTOUR INTERVAL 20 FEET
NORTH AMERICAN VERTICAL DATUM OF 1988

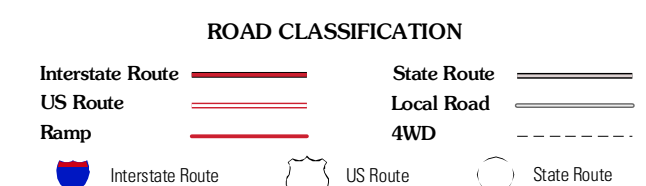
This map was produced to conform with version 0.5.10 of the draft USGS Standards for 7.5-Minute Quadrangle Maps. A metadata file associated with this product is draft version 0.5.11



QUADRANGLE LOCATION

Fruitland	Bat Cave	Lake Lure
Henderscott	Clifffield Mountain	Mill Spring
Zirconia	Saluda	Landrum

ADJOINING 7.5' QUADRANGLES



CLIFFFIELD MOUNTAIN, NC
2010