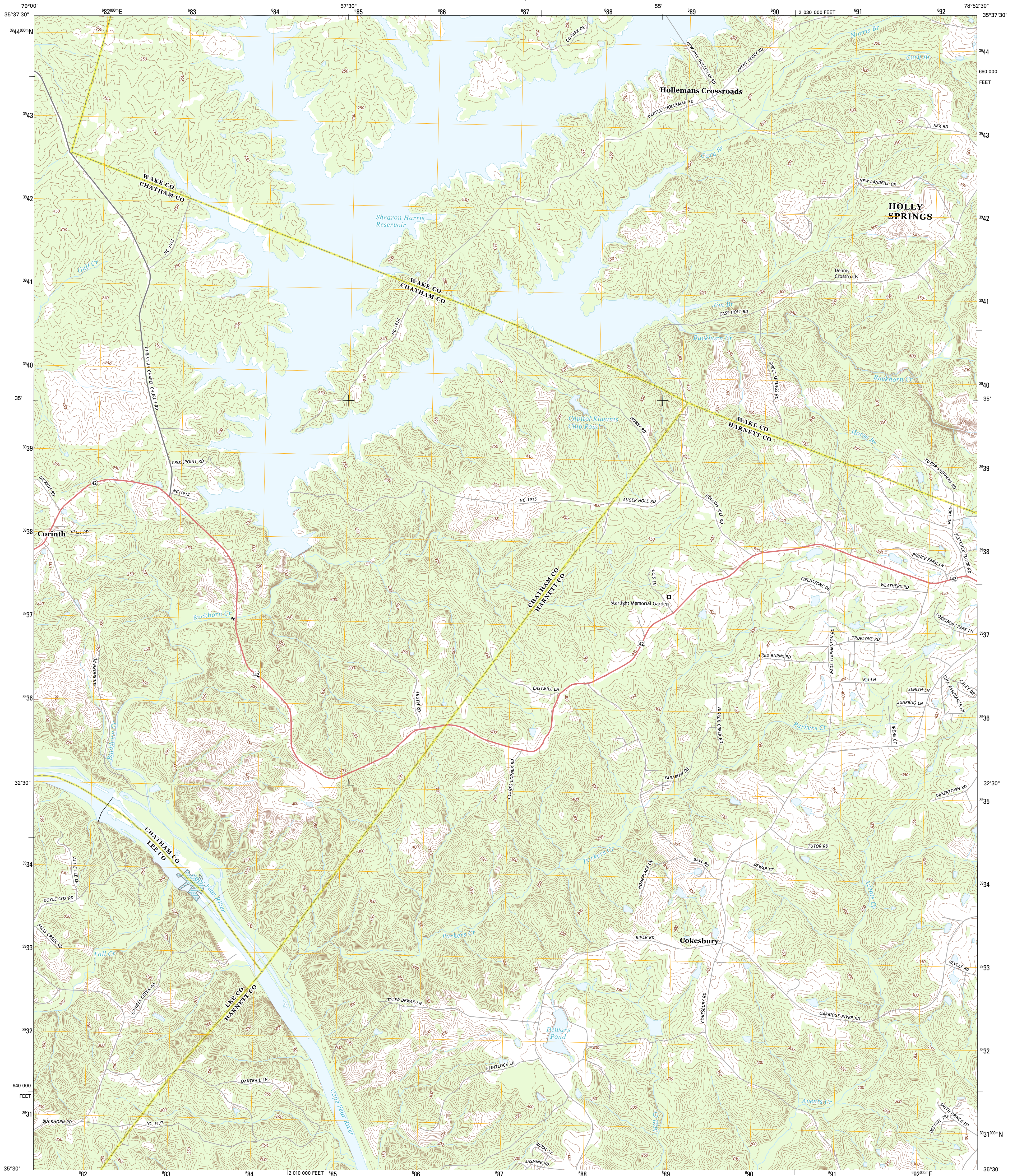




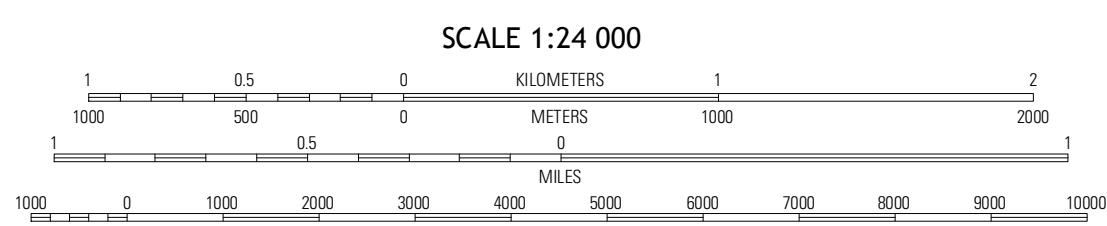
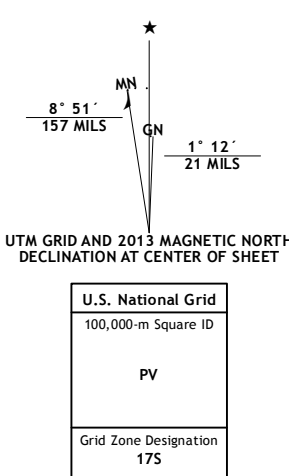
U.S. DEPARTMENT OF THE INTERIOR
U. S. GEOLOGICAL SURVEY



COKESBURY QUADRANGLE
NORTH CAROLINA
7.5-MINUTE SERIES

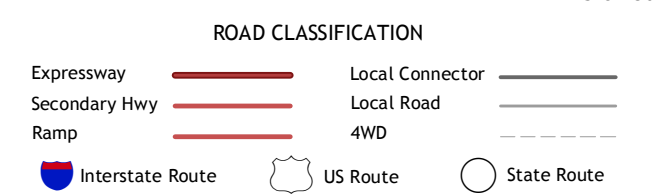


Produced by the United States Geological Survey
North American Datum of 1983 (NAD83)
World Geodetic System of 1984 (WGS84) Projection and
1 000-meter grid: Universal Transverse Mercator, Zone 17S
10 000-foot ticks: North Carolina Coordinate System of 1983



QUADRANGLE LOCATION

Merry Oaks	New Hill	Apex
Monroe	Cokesbury	Fuquay-Varina
Broadway	Mamers	Lillington



Imagery..... NAIIP, May 2012
©2006-2012, TomTom
Name..... GNIS, 2013
Hydrography..... National Hydrography Dataset, 2012
Contours..... National Elevation Dataset, 2008
Boundaries..... Census, IBWC, IBC, USGS, 1972 - 2012

CONTOUR INTERVAL 10 FEET
NORTH AMERICAN VERTICAL DATUM OF 1988
This map was produced to conform with the
National Geospatial Program US Topo Product Standard, 2011.
A metadata file associated with this product is draft version 0.6.11

COKESBURY, NC
2013

ADJOINING 7.5 QUADRANGLES