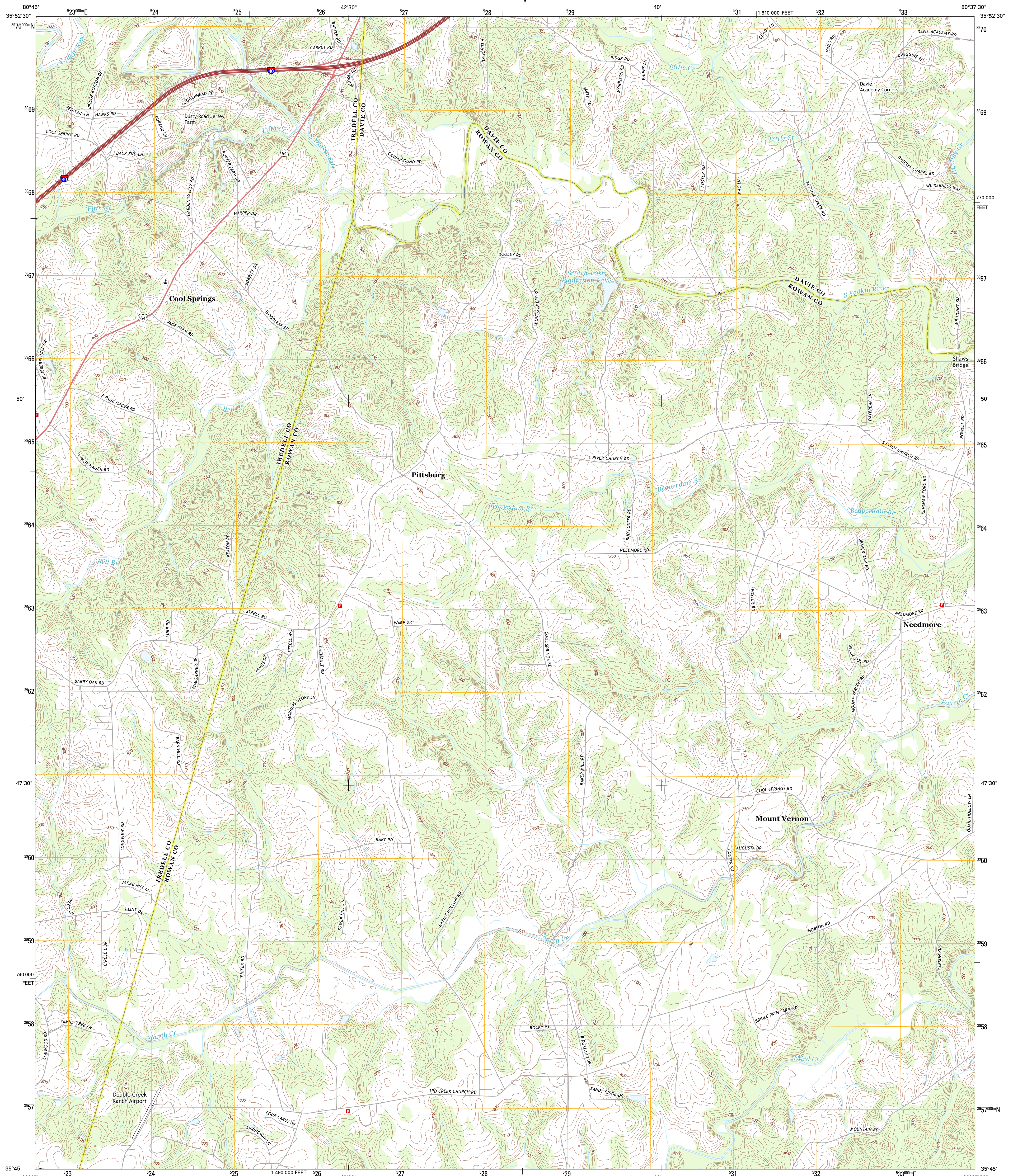




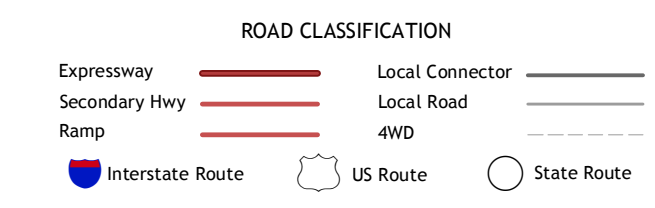
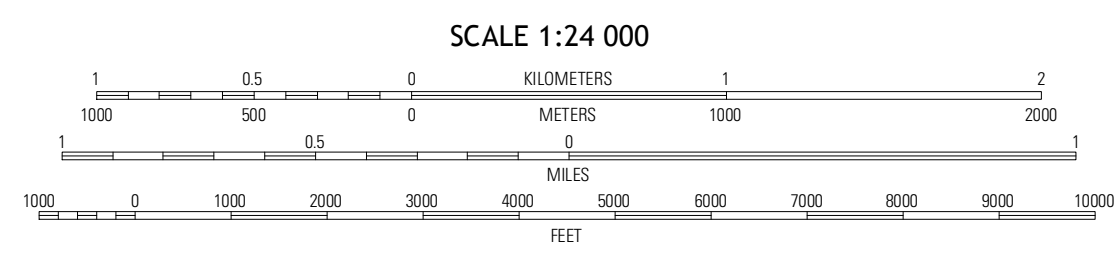
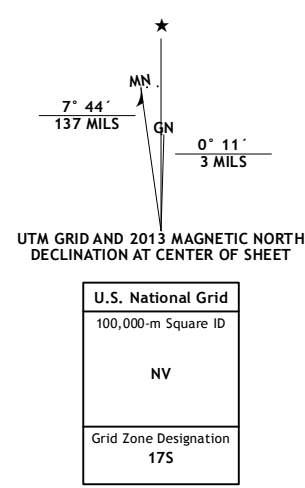
U.S. DEPARTMENT OF THE INTERIOR
U. S. GEOLOGICAL SURVEY



COOL SPRINGS QUADRANGLE
NORTH CAROLINA
7.5-MINUTE SERIES



Produced by the United States Geological Survey
North American Datum of 1983 (NAD83)
World Geodetic System of 1984 (WGS84), Projection and
1 000-meter grid: Universal Transverse Mercator, Zone 17S
10 000-foot ticks: North Carolina Coordinate System of 1983



QUADRANGLE LOCATION

| | | |
|------------------|--------------|-------------|
| Harmony | Cahalan | Mocksville |
| Statesville East | Cool Springs | Coolmeade |
| Sherpherd | Cleveland | Rowan Mills |

COOL SPRINGS, NC
2013

ADJOINING 7.5 QUADRANGLES

This map was produced to conform with the
National Geospatial Program US Topo Product Standard, 2011.
A metadata file associated with this product is draft version 0.6.11