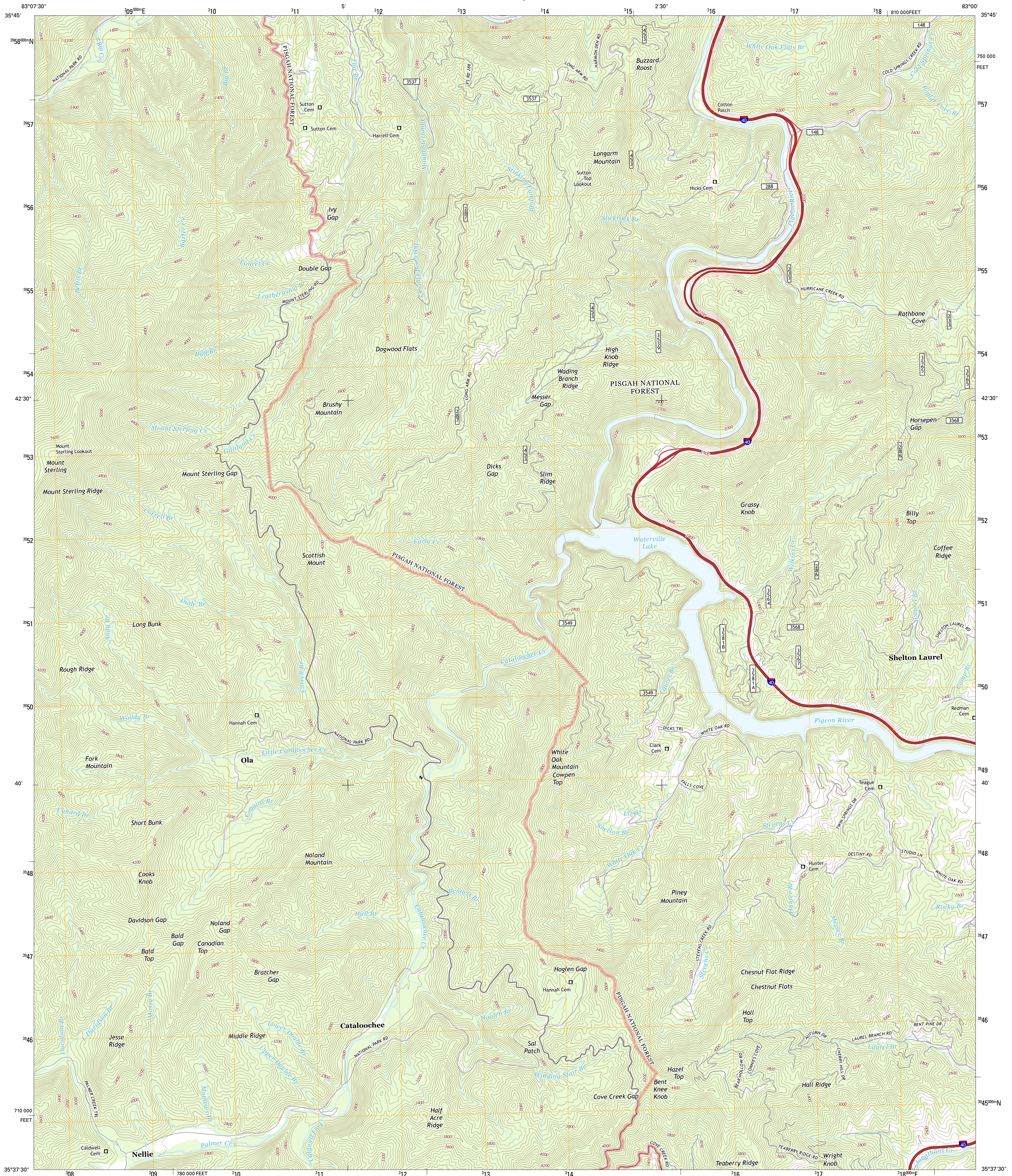




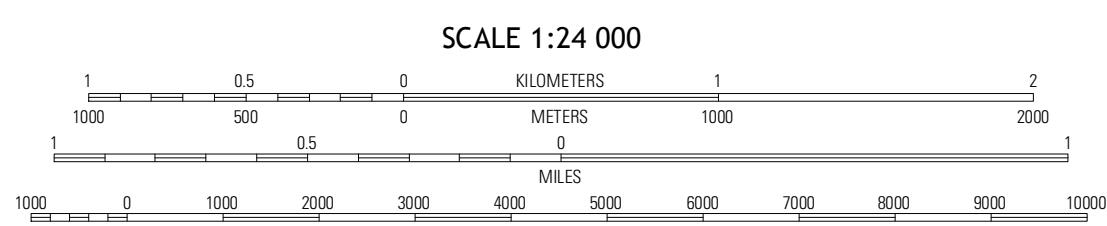
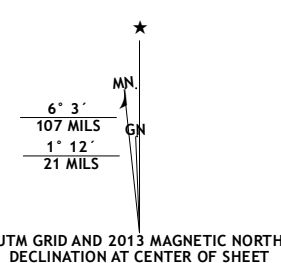
U.S. DEPARTMENT OF THE INTERIOR
U. S. GEOLOGICAL SURVEY



COVE CREEK GAP QUADRANGLE
NORTH CAROLINA-HAYWOOD CO.
7.5-MINUTE SERIES



Produced by the United States Geological Survey
North American Datum of 1983 (NAD83)
World Geodetic System of 1984 (WGS84), Projection and
1 000-meter grid; Universal Transverse Mercator, Zone 17S
10 000-foot ticks; North Carolina Coordinate System of 1983



QUADRANGLE LOCATION

Hartford	Waterville	Lemon Gap
Lufke Knob	Cove Creek Gap	Pines Creek
Bunches Bald	Dellwood	Clyde

ROAD CLASSIFICATION

- Expressway (thick red line)
- Secondary Hwy (red line)
- Ramp (red line with blue triangle)
- Interstate Route (red line with blue shield)
- FS Primary Route (red line with white shield)
- Local Connector (thin red line)
- Local Road (thin red line)
- 4WD (thin red line)
- US Route (black line with white shield)
- FS Passenger Route (black line with white shield)
- FS High Route (black line with white shield)
- State Route (black line with white shield)
- Clearance Route (black line with white shield)

Check with local Forest Service unit for current travel conditions and restrictions.

Imagery.....N.A.I.P. June 2012
Roads.....©2006-2012 TomTom
Roads within US Forest Service Lands with limited Forest Service updates, 2012
Names.....GNS, 2013
Hydrography.....National Hydrography Dataset, 2012
Contours.....National Elevation Dataset, 2008
Boundaries.....Census, IBWC, IBC, USGS, 1972 - 2012

U.S. National Grid
100,000-m Square ID
LV
Grid Zone Designation
17S

CONTOUR INTERVAL 40 FEET
NORTH AMERICAN VERTICAL DATUM OF 1988
This map was produced to conform with the National Geospatial Program US Topo Product Standard, 2011. A metadata file associated with this product is draft version 0.6.11

ADJOINING 7.5 QUADRANGLES

COVE CREEK GAP, NC
2013