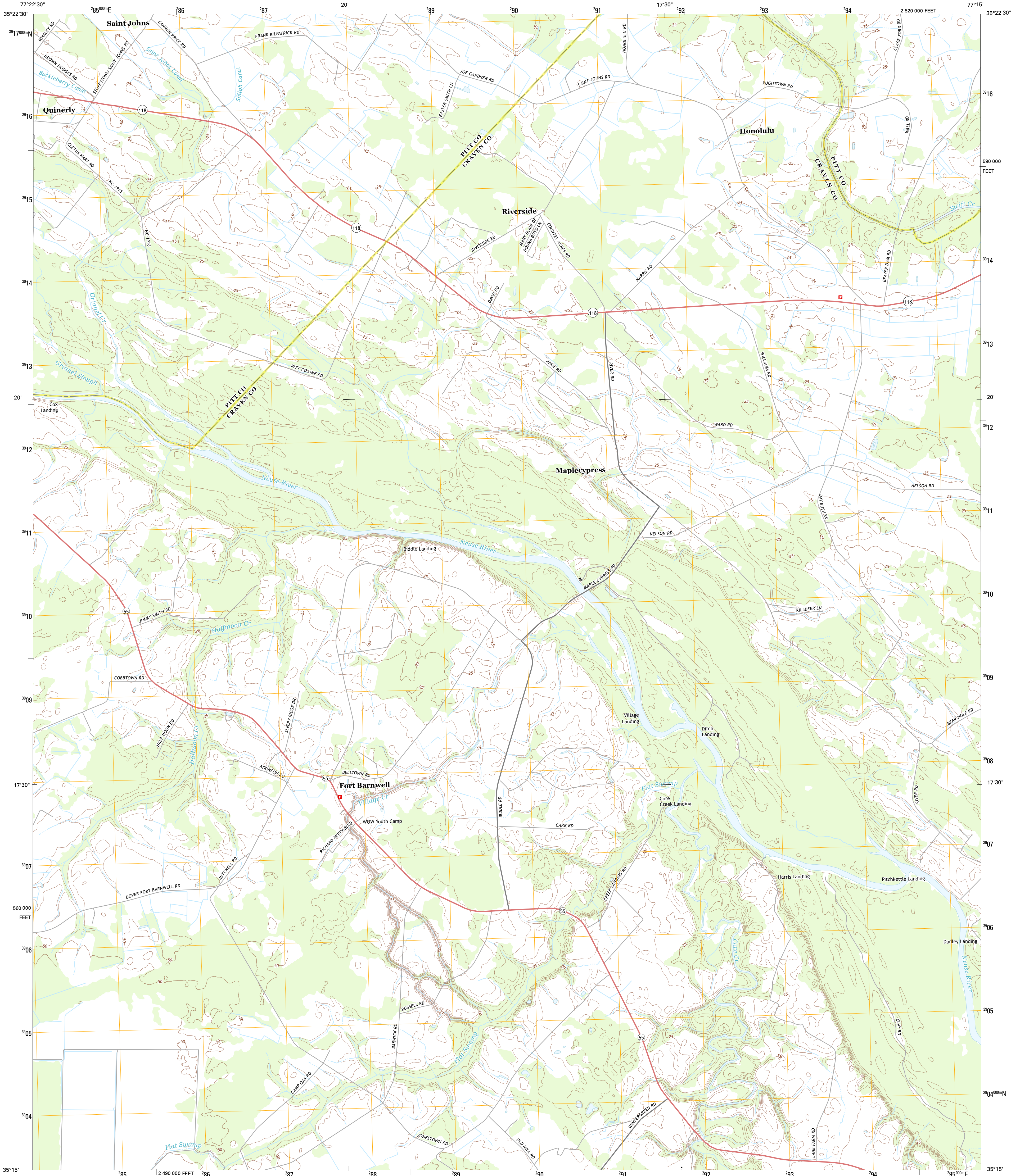




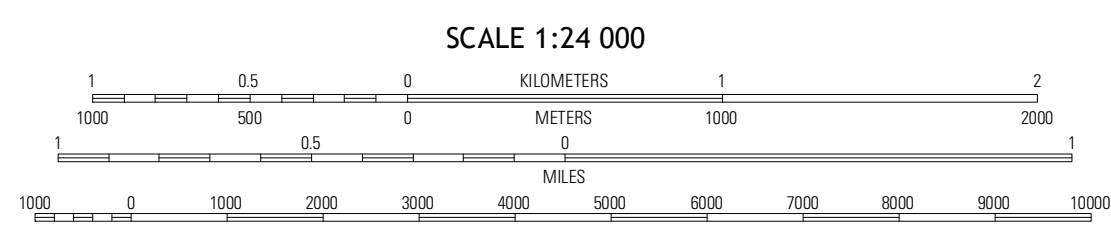
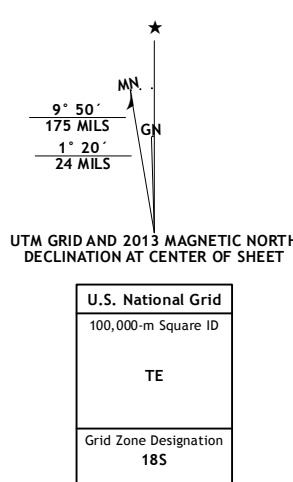
U.S. DEPARTMENT OF THE INTERIOR  
U. S. GEOLOGICAL SURVEY



FORT BARNWELL QUADRANGLE  
NORTH CAROLINA  
7.5-MINUTE SERIES

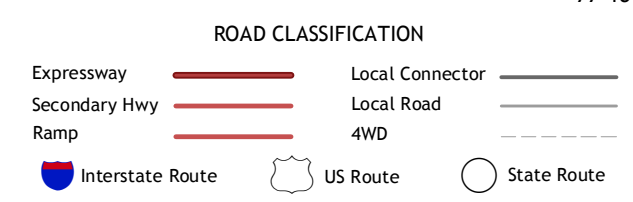


Produced by the United States Geological Survey  
North American Datum of 1983 (NAD83)  
World Geodetic System of 1984 (WGS84). Projection and  
1 000-meter grid: Universal Transverse Mercator, Zone 18S  
10 000-foot ticks: North Carolina Coordinate System of 1983



QUADRANGLE LOCATION

|         |               |           |
|---------|---------------|-----------|
| Ayden   | Gardnersville | Willmar   |
| Grifton | Fort Barnwell | Vanceboro |
| Dover   | Cove City     | Jasper    |



Imagery: N.A.I.P., May 2012  
Roads: ©2006-2012 TomTom  
Names: GNS, 2012  
Hydrography: National Hydrography Dataset, 2012  
Contours: National Elevation Dataset, 2008  
Boundaries: Census, IBWC, IBC, USGS, 1972 - 2012

CONTOUR INTERVAL 5 FEET  
NORTH AMERICAN VERTICAL DATUM OF 1988

This map was produced to conform with the  
National Geospatial Program US Topo Product Standard, 2011.  
A metadata file associated with this product is draft version 0.6.11

FORT BARNWELL, NC  
2013

ADJOINING 7.5 QUADRANGLES