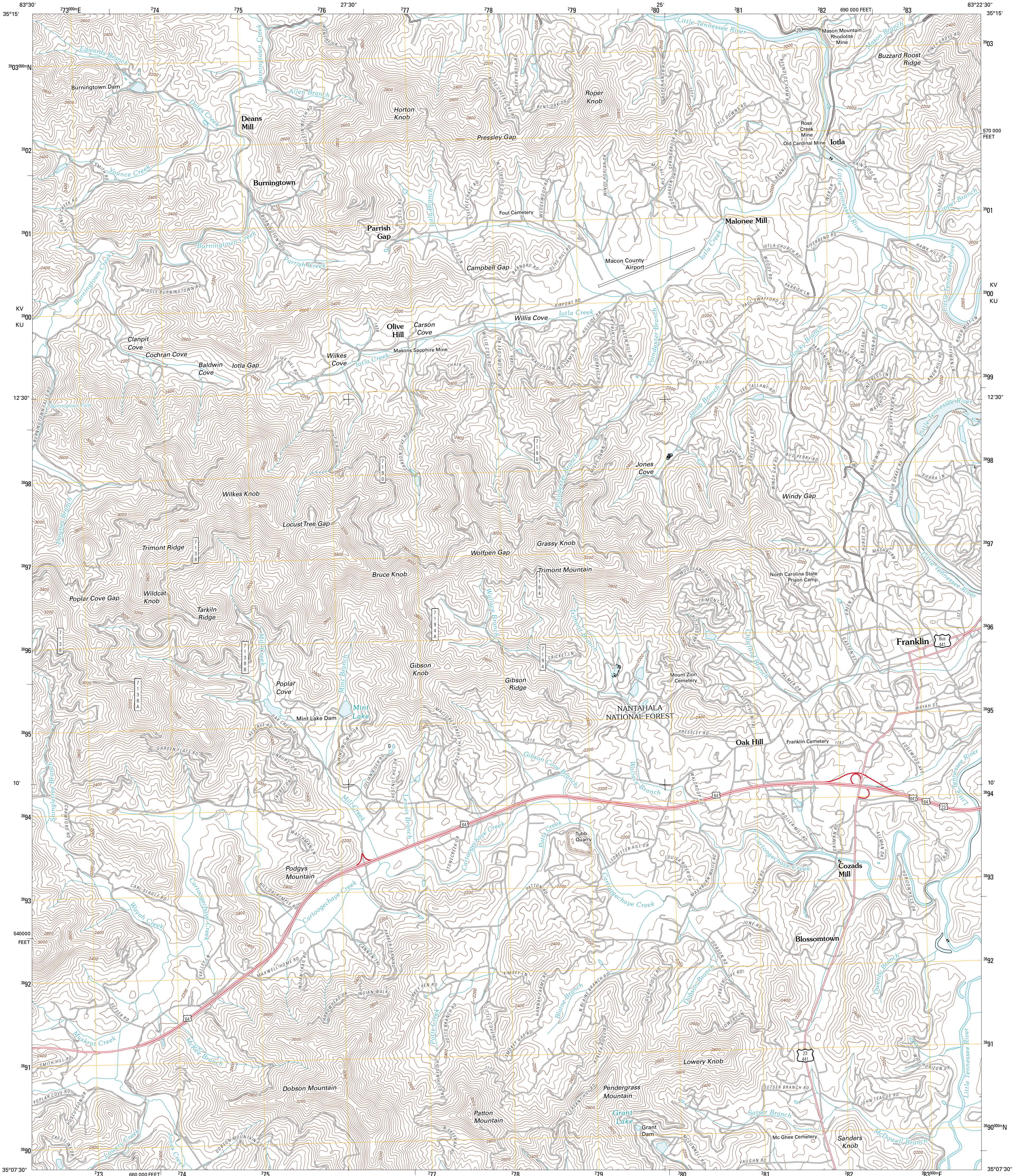




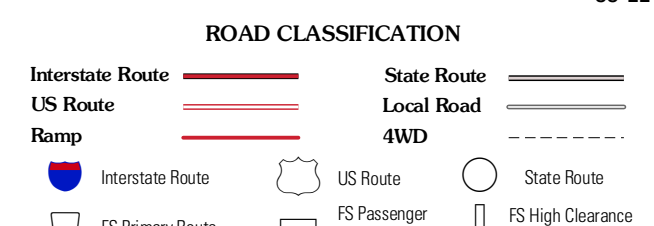
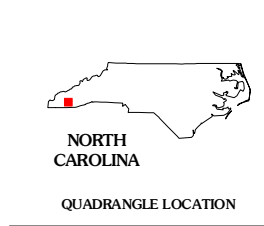
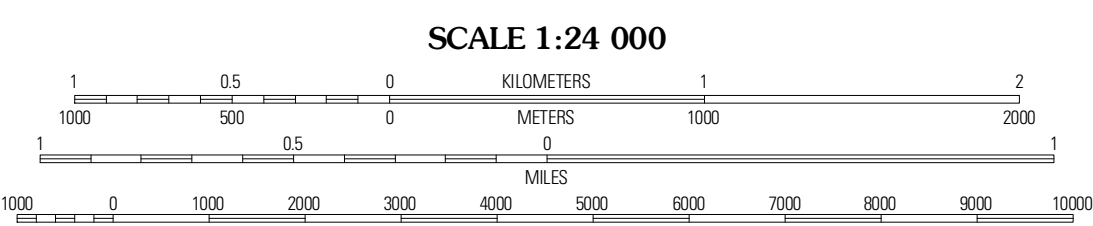
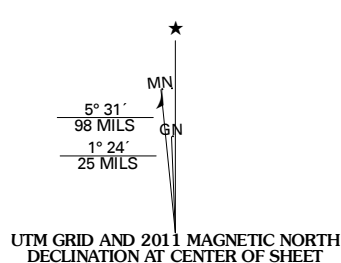
U.S. DEPARTMENT OF THE INTERIOR
U. S. GEOLOGICAL SURVEY



FRANKLIN QUADRANGLE
NORTH CAROLINA
7.5-MINUTE SERIES



Produced by the United States Geological Survey
North American Datum of 1983 (NAD83)
World Geodetic System of 1984 (WGS84). Projection and
1 000-meter grid: Universal Transverse Mercator, Zone 17S
10 000-foot ticks: North Carolina Coordinate System of 1983



Imagery: NAI, October 2009
Roads: 2006-2010 Tele Atlas
Roads within US Forest Service Lands: FSTopo Data with limited Forest Service updates, 2009
Names: GNS, 2010
Contours: National Hydrography Dataset, 2009
Contours: National Elevation Dataset, 2008

U.S. National Grid	KV	73
100,000-m Square ID	KU	70
Grid Zone Designation	17S	

CONTOUR INTERVAL 40 FEET
NORTH AMERICAN VERTICAL DATUM OF 1988
This map was produced to conform with version 0.5.10 of the draft USGS Standards for 7.5-Minute Quadrangle Maps. A metadata file associated with this product is draft version 0.5.12

Wesser	Aluka	Greens Creek
Wayah Bald	Franklin	Corbin Knob
Rainbow Springs	Prentiss	Scaly Mountain

Check with local Forest Service unit for current travel conditions and restrictions.

FRANKLIN, NC
2011

ADJOINING 7.5 QUADRANGLES