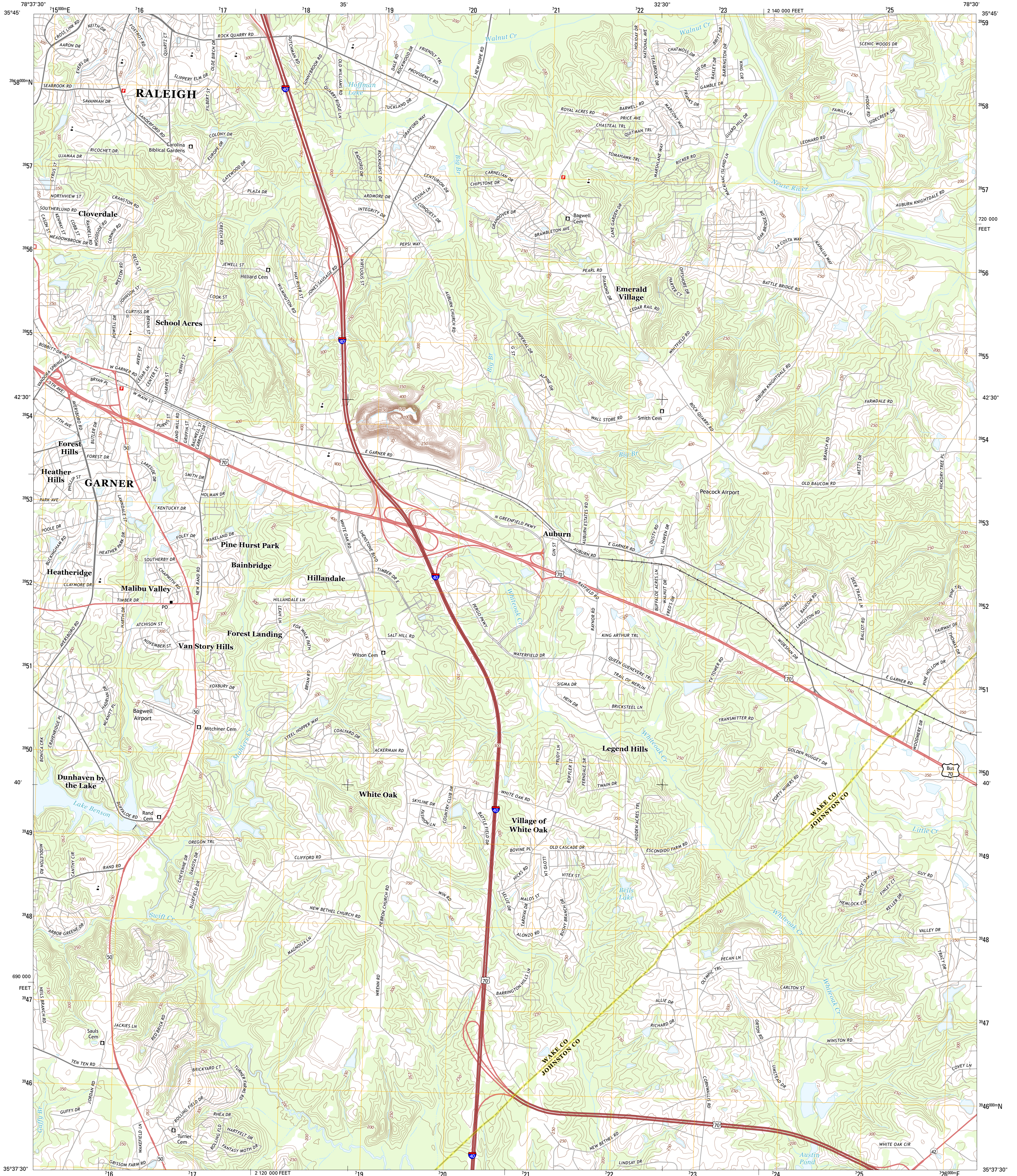




U.S. DEPARTMENT OF THE INTERIOR  
U. S. GEOLOGICAL SURVEY

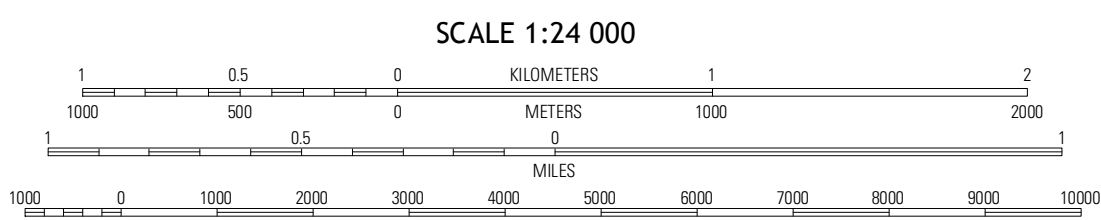
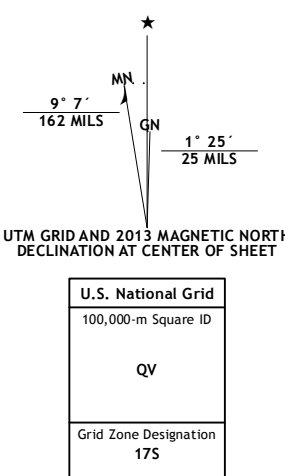


GARNER QUADRANGLE  
NORTH CAROLINA  
7.5-MINUTE SERIES



Produced by the United States Geological Survey  
North American Datum of 1983 (NAD83)  
World Geodetic System of 1984 (WGS84). Projection and  
1 000-meter grid: Universal Transverse Mercator, Zone 17S  
10 000-foot ticks: North Carolina Coordinate System of 1983

Imagery.....NAIP, May 2012  
Roads.....©2006-2012 TomTom  
Names.....GNIS, 2013  
Hydrography.....National Hydrography Dataset, 2012  
Contours.....National Elevation Dataset, 2008  
Boundaries.....Census, IRWC, IBC, USGS, 1972 - 2012

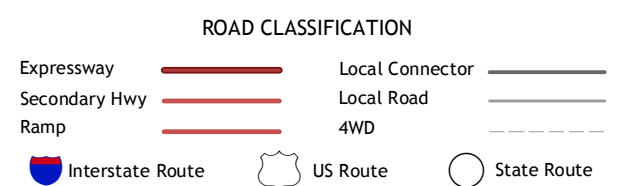


CONTOUR INTERVAL 10 FEET  
NORTH AMERICAN VERTICAL DATUM OF 1988  
This map was produced to conform with the  
National Geospatial Program US Topo Product Standard, 2011.  
A metadata file associated with this product is draft version 0.6.11



QUADRANGLE LOCATION		
Raleigh West	Raleigh East	Knightdale
Lake Wheeler	Garner	Clayton
Angier	Edmondson	Powhatan

ADJOINING 7.5 QUADRANGLES



GARNER, NC  
2013