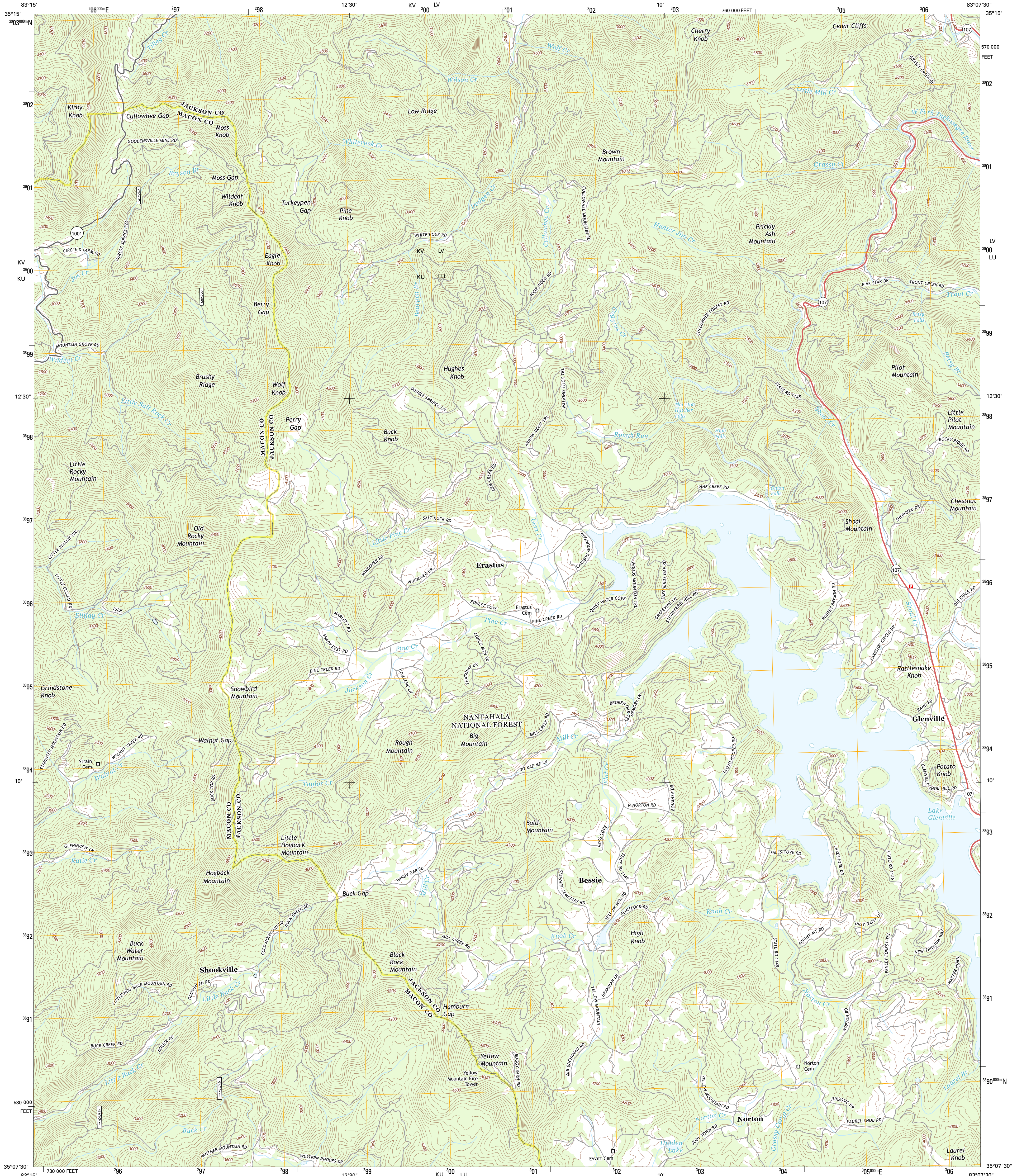




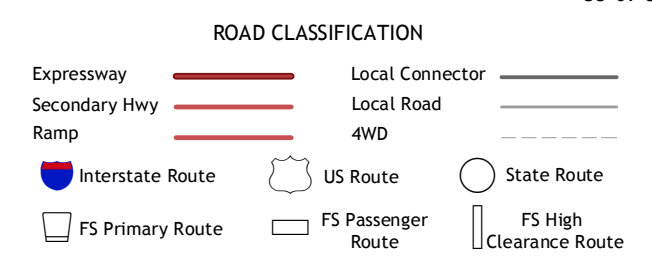
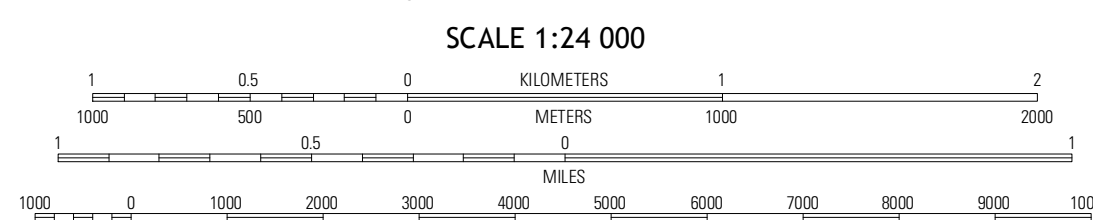
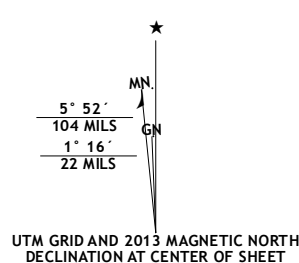
U.S. DEPARTMENT OF THE INTERIOR
U. S. GEOLOGICAL SURVEY



GLENVILLE QUADRANGLE
NORTH CAROLINA
7.5-MINUTE SERIES



Produced by the United States Geological Survey
North American Datum of 1983 (NAD83)
World Geodetic System of 1984 (WGS84) Projection and
1 000-meter grid; Universal Transverse Mercator, Zone 17S
10 000-foot ticks; North Carolina Coordinate System of 1983



QUADRANGLE LOCATION

Greens Creek	Slyva South	Tuckasee
Corbin Knob	Glennville	Big Ridge
Sally Mountain	Highlands	Cashiers

Imagery.....NAIP, June 2012
Roads.....©2006-2012, TomTom
Roads within US Forest Service Lands
with limited Forest Service updates, 2012
Names.....GNIS, 2013
Hydrography.....National Hydrography Dataset, 2012
Contours.....National Elevation Dataset, 2008
Boundaries.....Census, IBWC, IBC, USGS, 1972 - 2012

U.S. National Grid	100,000-m Square ID
KV LV	100
KU LU	100
Grid Zone Designation	17S

CONTOUR INTERVAL 40 FEET
NORTH AMERICAN VERTICAL DATUM OF 1988

This map was produced to conform with the National Geospatial Program US Topo Product Standard, 2011. A metadata file associated with this product is draft version 0.6.11

GLENVILLE, NC
2013

ADJOINING 7.5 QUADRANGLES