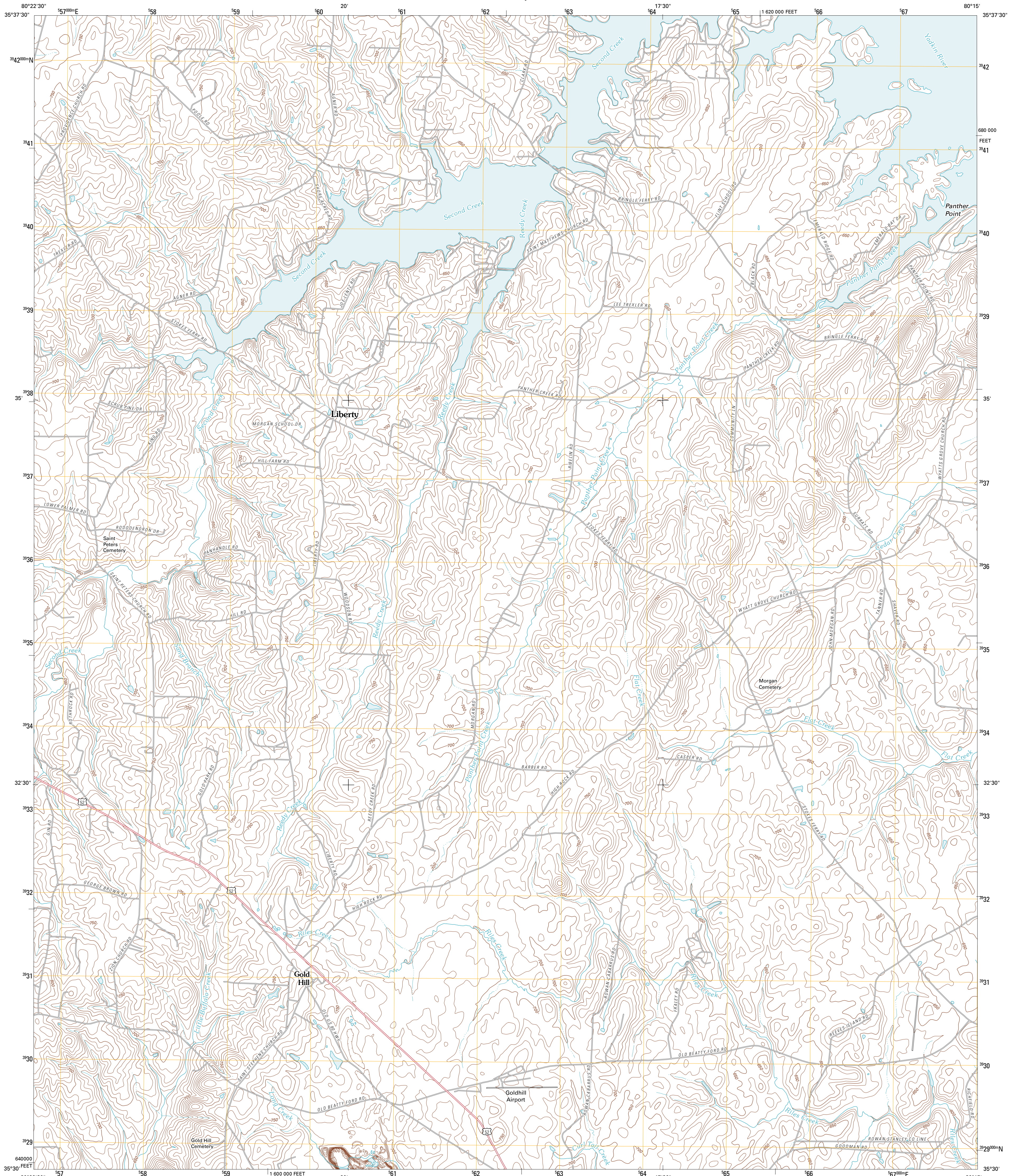




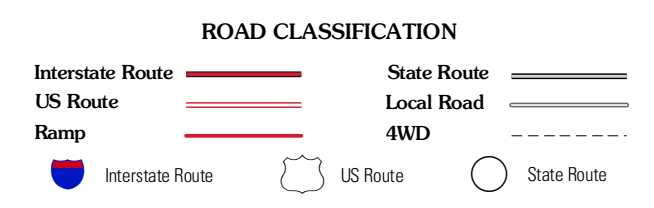
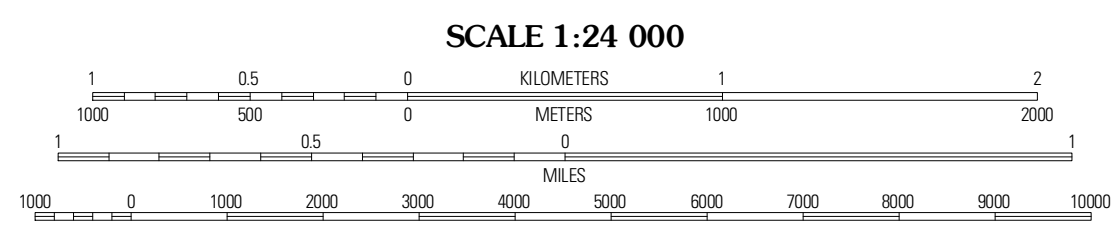
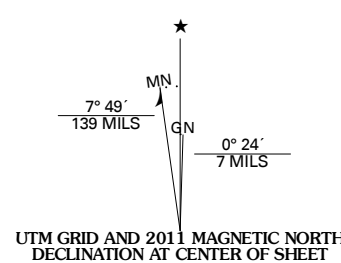
U.S. DEPARTMENT OF THE INTERIOR  
U. S. GEOLOGICAL SURVEY



GOLD HILL QUADRANGLE  
NORTH CAROLINA  
7.5-MINUTE SERIES



Produced by the United States Geological Survey  
North American Datum of 1983 (NAD83)  
World Geodetic System of 1984 (WGS84). Projection and  
1 000-meter grid: Universal Transverse Mercator, Zone 17S  
10 000-foot ticks: North Carolina Coordinate System of 1983



QUADRANGLE LOCATION

Salisbury	Southmont	Grist Mountain
Rockwell	Gold Hill	High Rock
Mount Pleasant	Richfield	New London

Imagery: N.A.I.P., September 2009  
Roads: ©2006-2010 Tele Atlas  
Names: G.NIS, 2010  
Hydrography: National Hydrography Dataset, 2009  
Contours: National Elevation Dataset, 2008

CONTOUR INTERVAL 10 FEET  
NORTH AMERICAN VERTICAL DATUM OF 1988

This map was produced to conform with version 0.5.10 of the  
draft USGS Standards for 7.5-Minute Quadrangle Maps.  
A metadata file associated with this product is draft version 0.5.11

GOLD HILL, NC  
2011

ADJOINING 7.5 QUADRANGLES