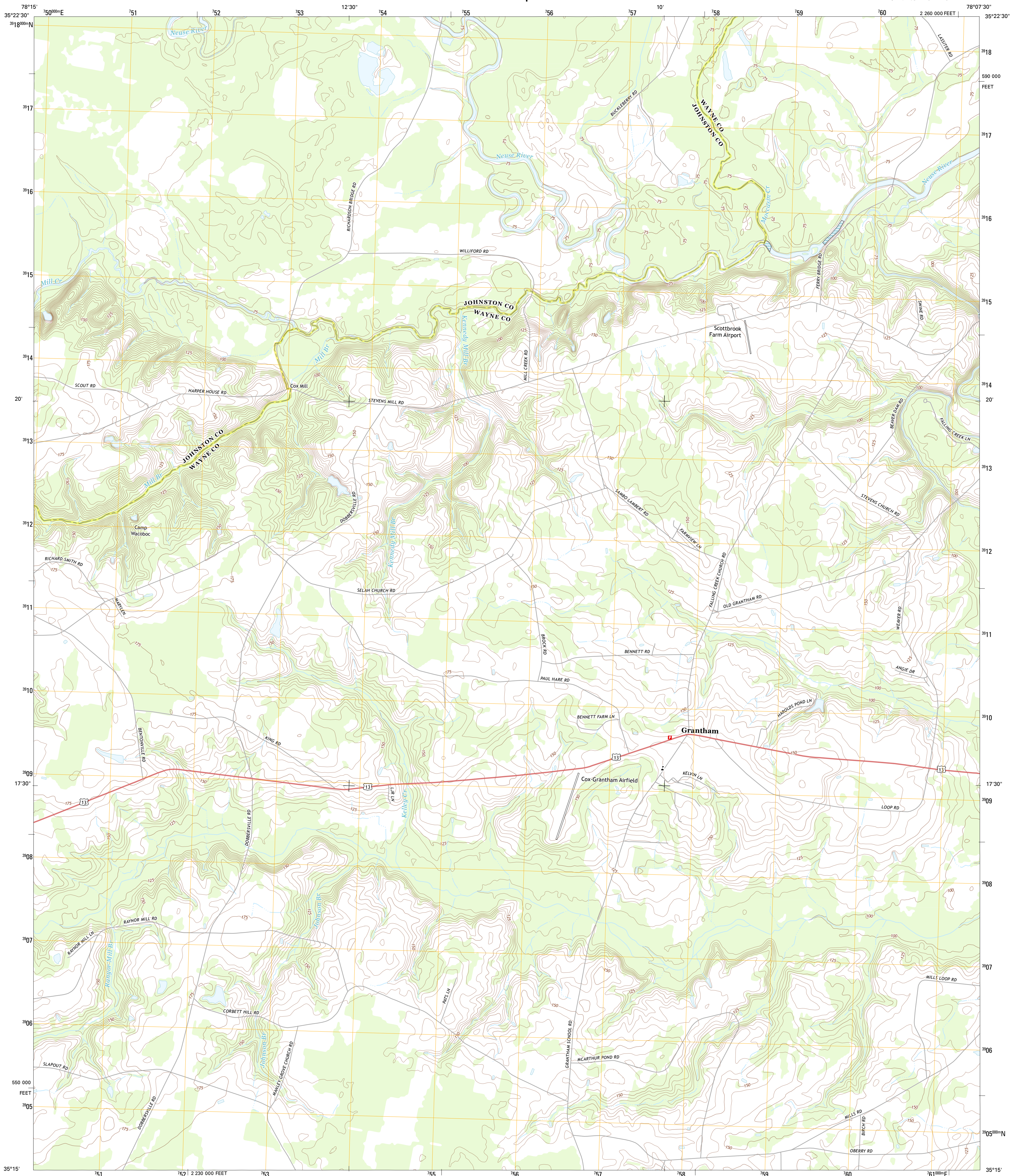




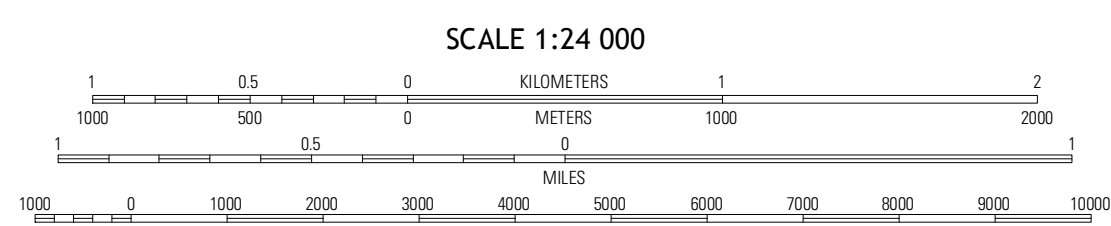
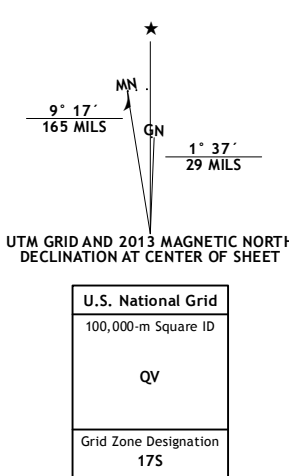
U.S. DEPARTMENT OF THE INTERIOR
U. S. GEOLOGICAL SURVEY



GRANTHAM QUADRANGLE
NORTH CAROLINA
7.5-MINUTE SERIES

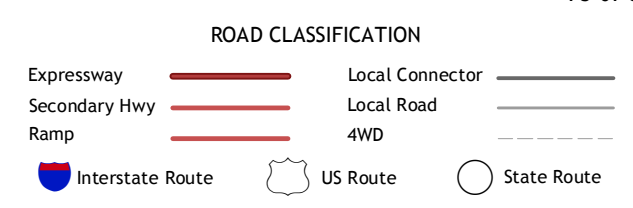


Produced by the United States Geological Survey
North American Datum of 1983 (NAD83)
World Geodetic System of 1984 (WGS84). Projection and
1 000-meter grid: Universal Transverse Mercator, Zone 17S
10 000-foot ticks: North Carolina Coordinate System of 1983



QUADRANGLE LOCATION

Four Oaks NE	Princeton	Northwest Gokshorn
Newton Grove North	Grantham	Southwest Gokshorn
Newton Grove South	Dobbersville	Mount Olive



GRANTHAM, NC
2013

This map was produced to conform with the National Geospatial Program US Topo Product Standard, 2011. A metadata file associated with this product is draft version 0.6.11