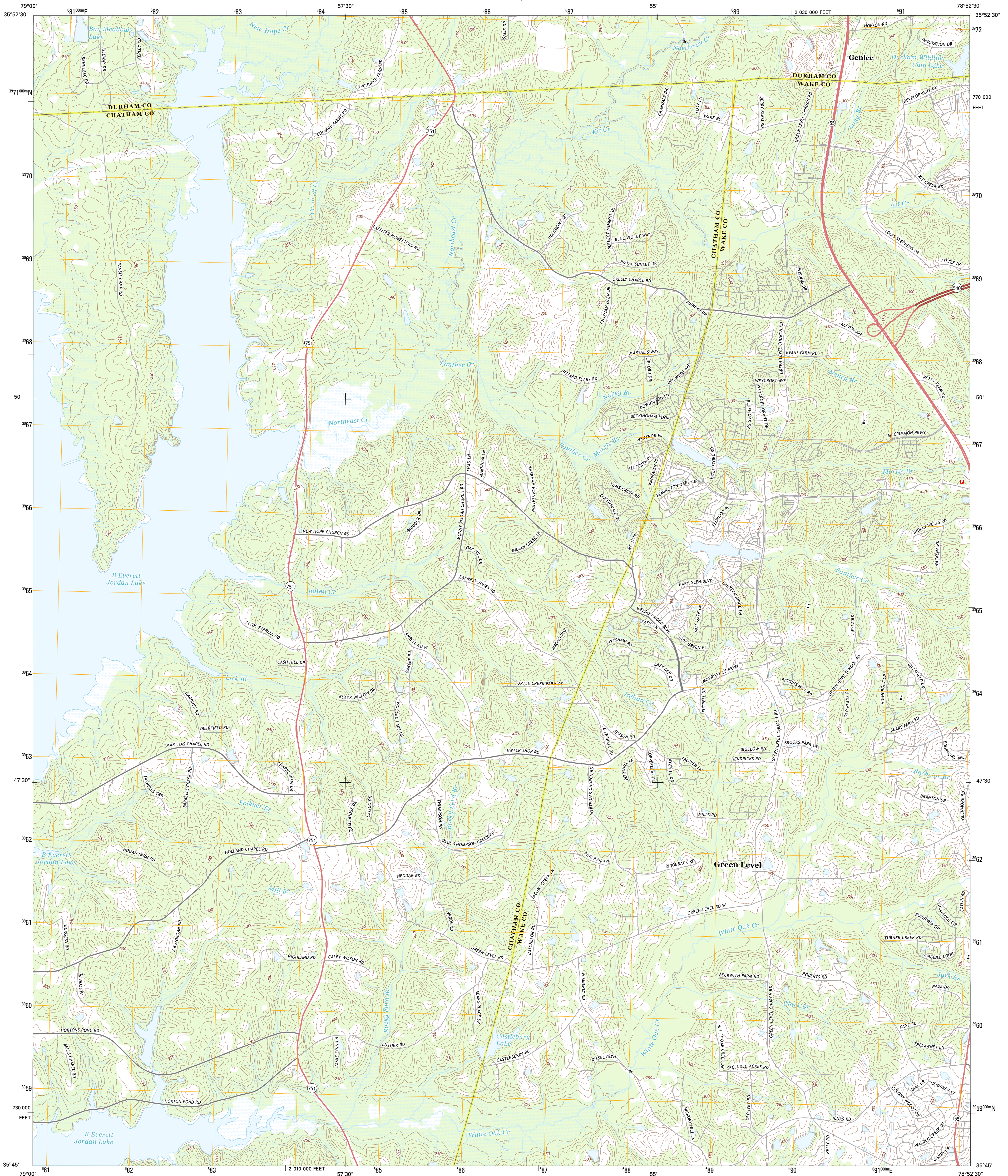




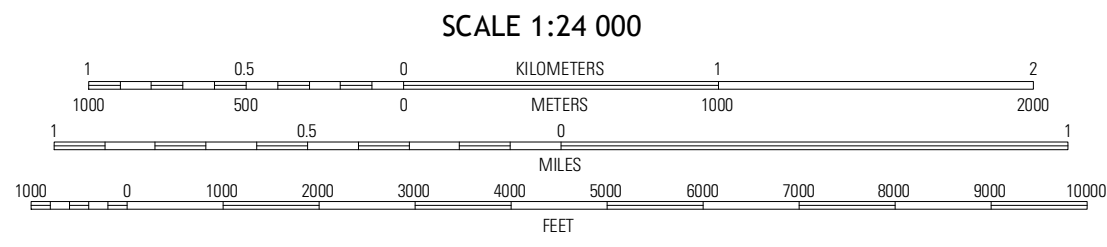
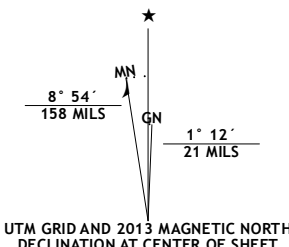
U.S. DEPARTMENT OF THE INTERIOR
U. S. GEOLOGICAL SURVEY



GREEN LEVEL QUADRANGLE
NORTH CAROLINA
7.5-MINUTE SERIES



Produced by the United States Geological Survey
North American Datum of 1983 (NAD83)
World Geodetic System of 1984 (WGS84). Projection and
1 000-meter grid: Universal Transverse Mercator, Zone 17S
10 000-foot ticks: North Carolina Coordinate System of 1983



| ROAD CLASSIFICATION | |
|---------------------|-----------------|
| Expressway | Local Connector |
| Secondary Hwy | Local Road |
| Ramp | 4WD |
| Interstate Route | US Route |
| | State Route |

| QUADRANGLE LOCATION | | |
|---------------------|------------------|------------------|
| Chapel Hill | Southwest Durham | Southeast Durham |
| Farrington | Green Level | Cary |
| Merry Oaks | New Hill | Apex |

ADJOINING 7.5 QUADRANGLES

GREEN LEVEL, NC
2013