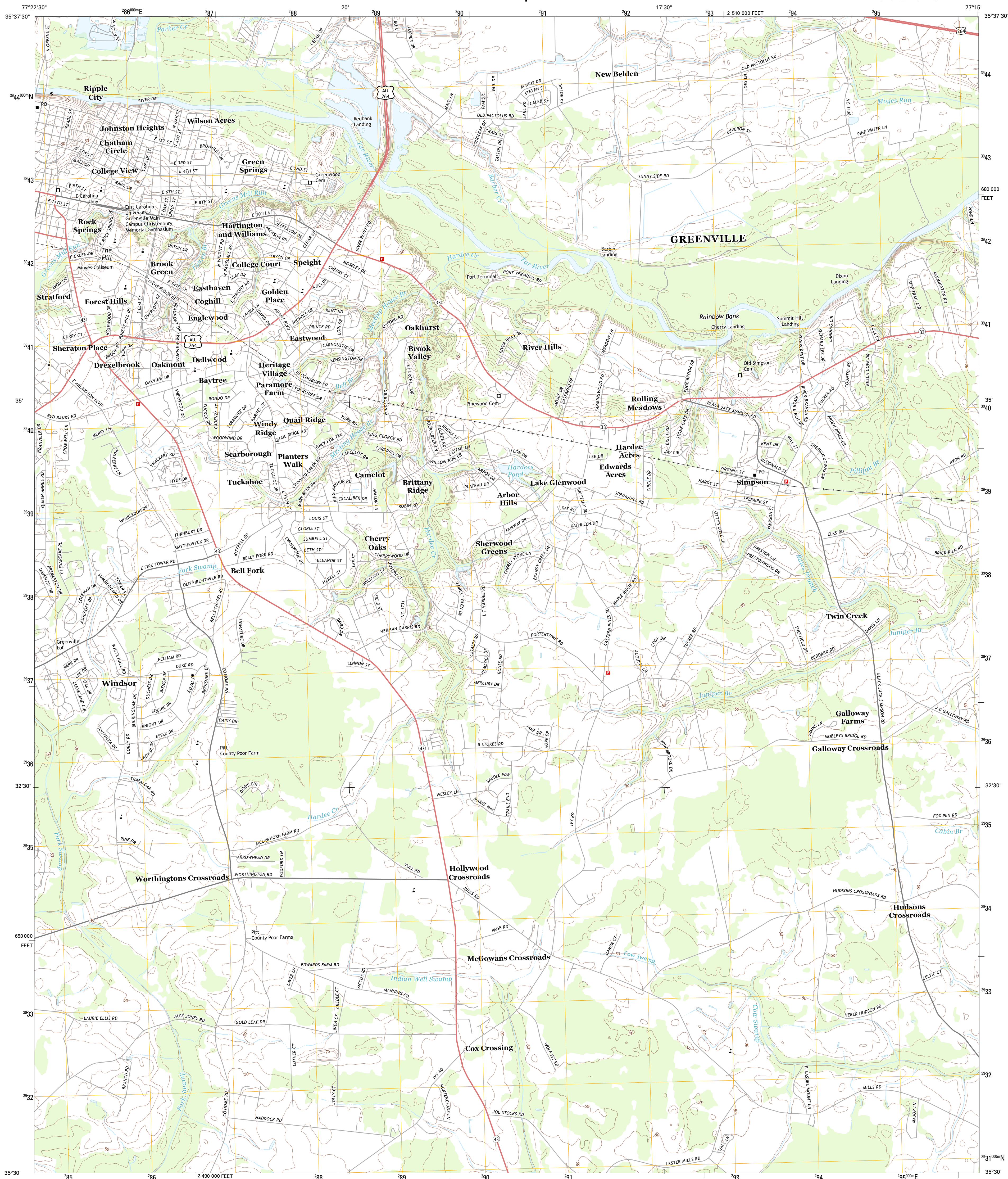




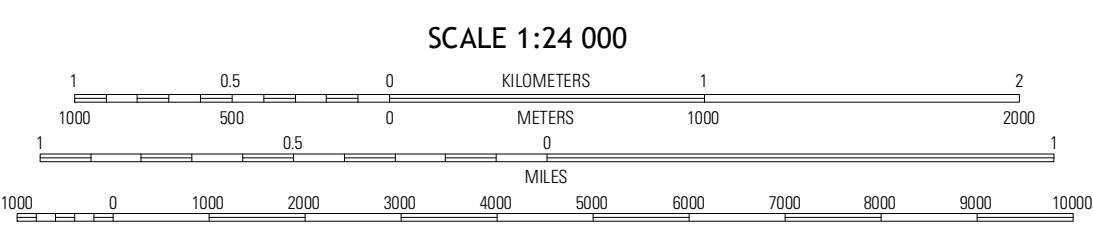
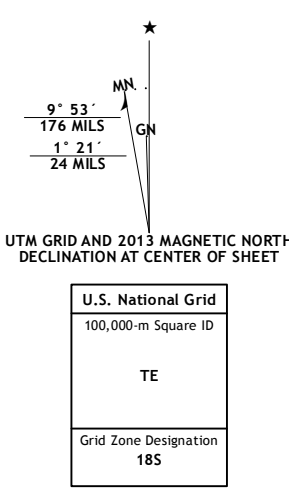
U.S. DEPARTMENT OF THE INTERIOR
U. S. GEOLOGICAL SURVEY



GREENVILLE SE QUADRANGLE
NORTH CAROLINA-PITT CO.
7.5-MINUTE SERIES

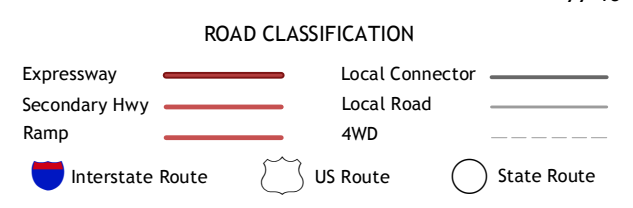


Produced by the United States Geological Survey
North American Datum of 1983 (NAD83)
World Geodetic System of 1984 (WGS84). Projection and
1 000-meter grid: Universal Transverse Mercator, Zone 18S
10 000-foot ticks: North Carolina Coordinate System of 1983



QUADRANGLE LOCATION

Greenville NW	Greenville NE	Leggett Crossroads
Greenville SW	Greenville SE	Grimesland
Aysen	Gardnerville	Wilmar



Imagery.....NAIP, May 2012
Roads.....©2006-2012, TomTom
Names.....GNS, 2012
Hydrography.....National Hydrography Dataset, 2012
Contours.....National Elevation Dataset, 2008
Boundaries.....Census, IRWC, IBC, USGS, 1972 - 2012

CONTOUR INTERVAL 5 FEET
NORTH AMERICAN VERTICAL DATUM OF 1988

This map was produced to conform with the
National Geospatial Program US Topo Product Standard, 2011.
A metadata file associated with this product is draft version 0.6.11

GREENVILLE SE, NC
2013

ADJOINING 7.5 QUADRANGLES