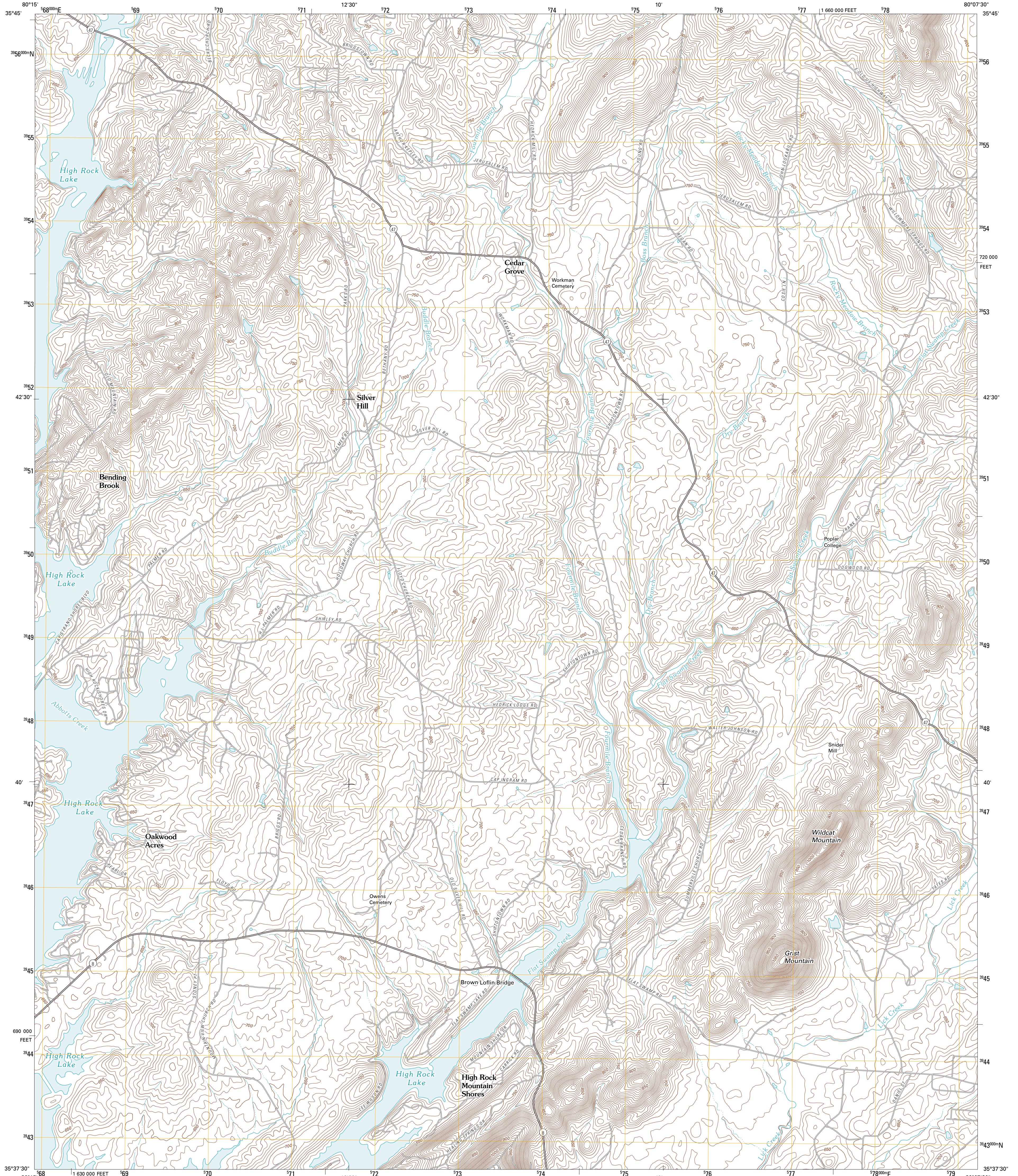




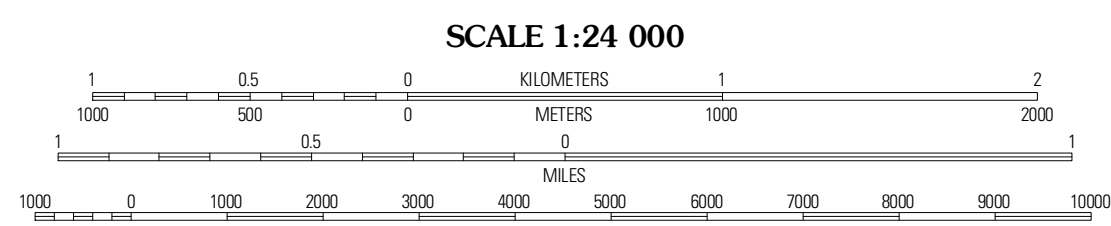
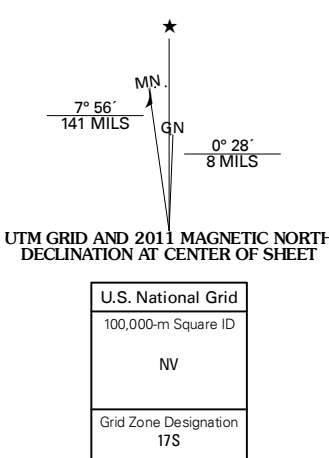
U.S. DEPARTMENT OF THE INTERIOR  
U. S. GEOLOGICAL SURVEY



GRIST MOUNTAIN QUADRANGLE  
NORTH CAROLINA  
7.5-MINUTE SERIES

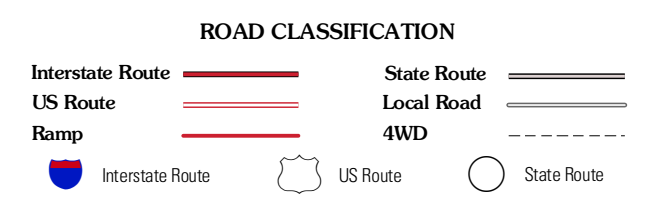


Produced by the United States Geological Survey  
North American Datum of 1983 (NAD83)  
World Geodetic System of 1984 (WGS84). Projection and  
1 000-meter grid: Universal Transverse Mercator, Zone 17S  
10 000-foot ticks: North Carolina Coordinate System of 1983



QUADRANGLE LOCATION

|                |                |            |
|----------------|----------------|------------|
| Lexington West | Lexington East | Fair Grove |
| Southmont      | Grist Mountain | Denton     |
| Gold Hill      | High Rock      | Handy      |



CONTOUR INTERVAL 10 FEET  
NORTH AMERICAN VERTICAL DATUM OF 1988

This map was produced to conform with version 0.5.10 of the draft USGS Standards for 7.5-Minute Quadrangle Maps. A metadata file associated with this product is draft version 0.5.11

GRIST MOUNTAIN, NC  
2011

ADJOINING 7.5 QUADRANGLES