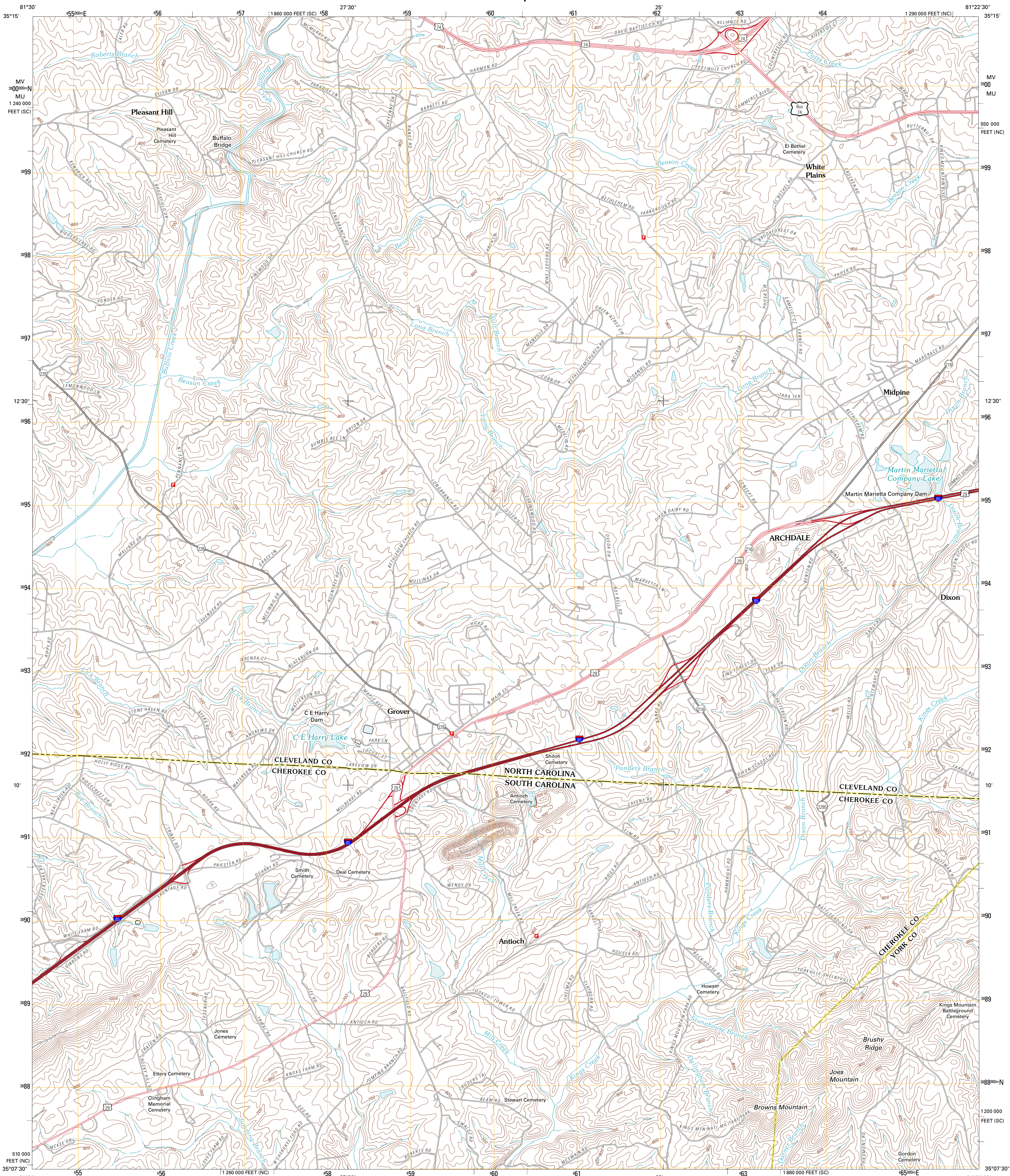




U.S. DEPARTMENT OF THE INTERIOR
U. S. GEOLOGICAL SURVEY



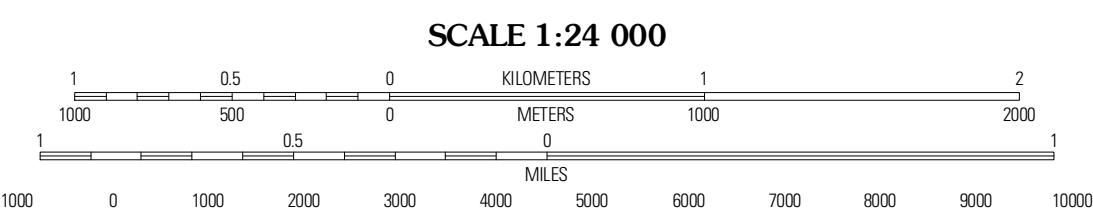
GROVER QUADRANGLE
NORTH CAROLINA-SOUTH CAROLINA
7.5-MINUTE SERIES



Produced by the United States Geological Survey
North American Datum of 1983 (NAD83)
World Geodetic System of 1984 (WGS84). Projection and
1 000-meter grid: Universal Transverse Mercator, Zone 17S
10 000-foot ticks: North Carolina Coordinate System of
1983, South Carolina Coordinate System of 1983

UTM GRID AND 2011 MAGNETIC NORTH
DECLINATION AT CENTER OF SHEET

U.S. National Grid
100,000-m Square ID
MV 730
MU 730
Grid Zone Designation
17S



ROAD CLASSIFICATION

Interstate Route	State Route
US Route	Local Road
Ramp	4WD

QUADRANGLE LOCATION

Shelby	Waco	Bessemer City
Blackburg North	Grover	Kings Mountain
Blackburg South	Kings Creek	Filbert

GROVER, NC-SC
2011

CONTOUR INTERVAL 20 FEET
NORTH AMERICAN VERTICAL DATUM OF 1988

This map was produced to conform with version 0.5.10
of the USGS US Topo Product Standard.
A metadata file associated with this product is draft version 0.5.16

Imagery: NAIP, July 2009
Roads: 2006-2010 Tele Atlas
Names: GNS, 2010
Hydrography: National Hydrography Dataset, 2009
Contours: National Elevation Dataset, 2009
Boundaries: Census, IBWC, IBC, USGS, 1972-2010

ADJOINING 7.5 QUADRANGLES