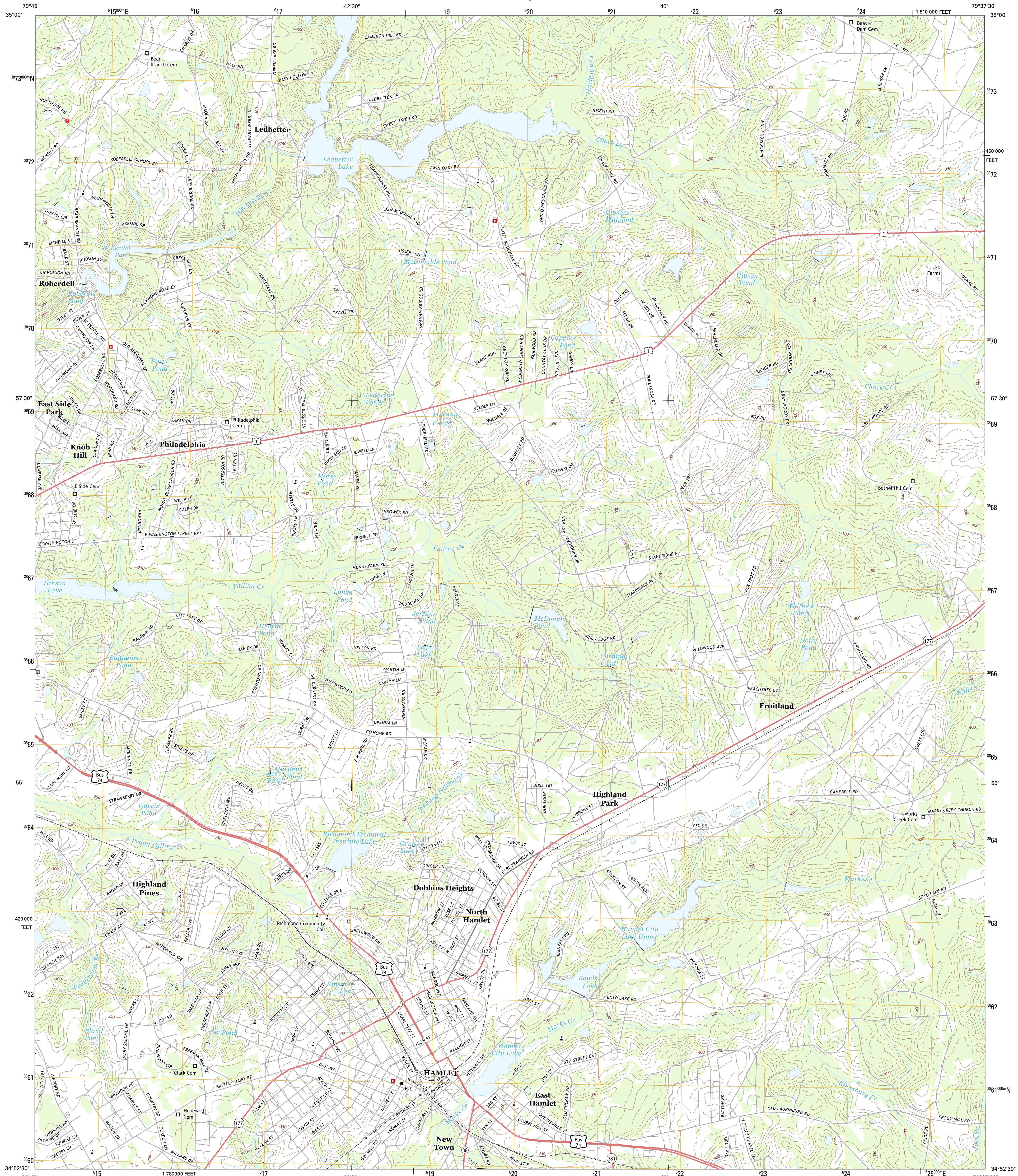




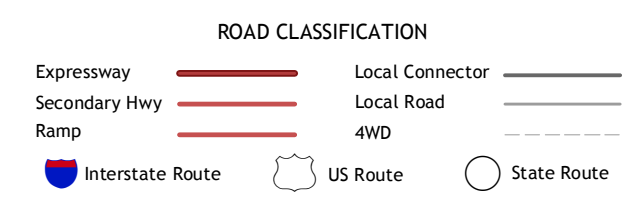
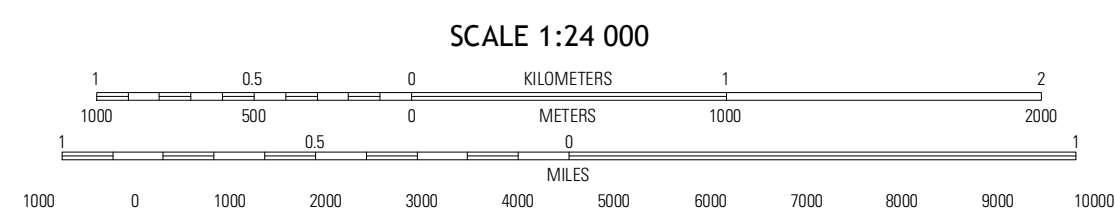
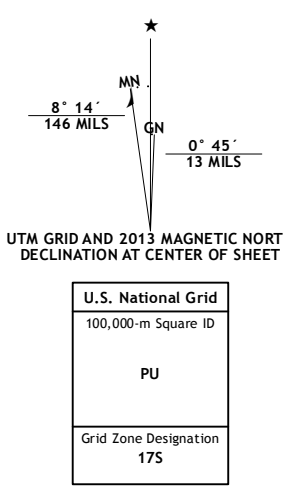
U.S. DEPARTMENT OF THE INTERIOR
U. S. GEOLOGICAL SURVEY



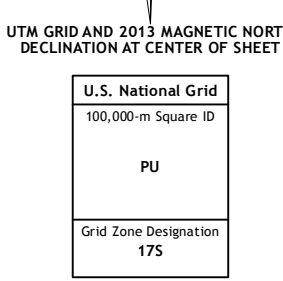
HAMLET QUADRANGLE
NORTH CAROLINA-RICHMOND CO.
7.5-MINUTE SERIES



Produced by the United States Geological Survey
North American Datum of 1983 (NAD83)
World Geodetic System of 1984 (WGS84) Projection and
1 000-meter grid: Universal Transverse Mercator, Zone 17S
10 000-foot ticks: North Carolina Coordinate System of 1983



Imagery.....NAIP, June 2012
Roads.....G2006-2012 TomTom
Names.....GNIS, 2013
Hydrography.....National Hydrography Dataset, 2012
Contours.....National Elevation Dataset, 2008
Boundaries.....Census, IBWC, USGS, 1972-2012



CONTOUR INTERVAL 10 FEET
NORTH AMERICAN VERTICAL DATUM OF 1988

This map was produced to conform with the
National Geospatial Program US Topo Product Standard, 2011.
A metadata file associated with this product is draft version 0.6.11

QUADRANGLE LOCATION

Elber	Mills Lake	Huffman
Rockingham	Hamlet	Marston
Diggs	Chio	Gibson

HAMLET, NC
2013

ADJOINING 7.5 QUADRANGLES