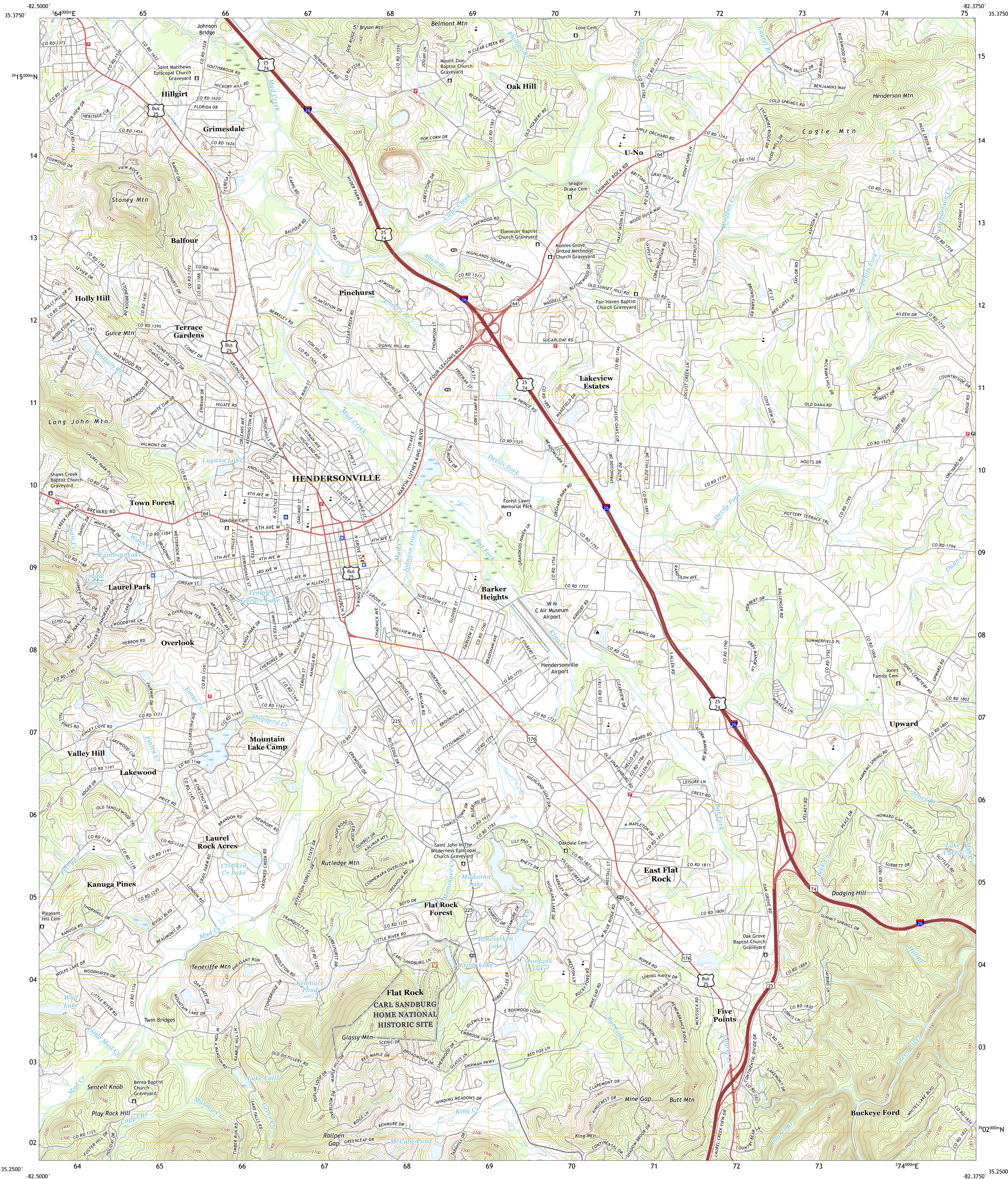




U.S. DEPARTMENT OF THE INTERIOR
U.S. GEOLOGICAL SURVEY

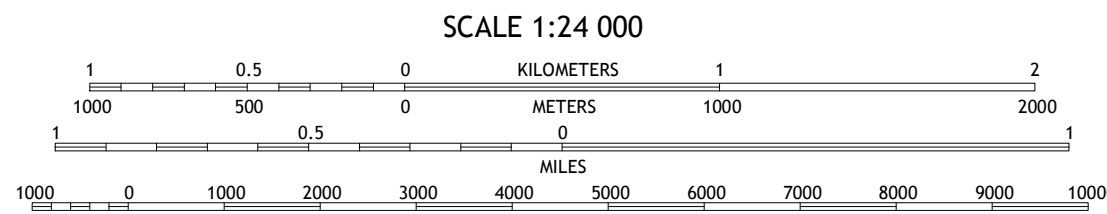
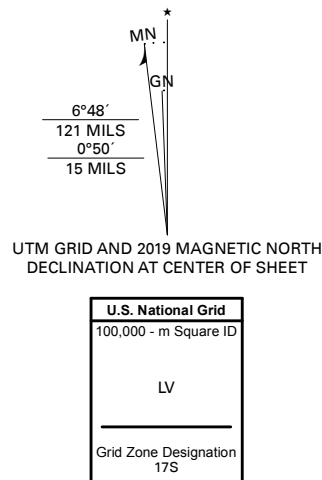


HENDERSONVILLE QUADRANGLE
NORTH CAROLINA - HENDERSON COUNTY
7.5-MINUTE SERIES



Produced by the United States Geological Survey

North American Datum of 1983 (NAD83)
World Geodetic System of 1984 (WGS84). Projection and
1 000-meter grid/Universal Transverse Mercator, Zone 17S
This map is not a legal document. Boundaries may be
generalized for this map scale. Private lands within government
reservations may not be shown. Obtain permission before
entering private lands.
Imagery.....NAIP, June 2016 - November 2016
Roads.....U.S. Census Bureau, 2016
Names.....GNIS, 1980 - 2019
Hydrography.....National Hydrography Dataset, 2003 - 2019
Contours.....National Elevation Dataset, 2000 - 2008
Boundaries.....Multiple sources; see metadata file 2017 - 2018
Wetlands.....FWS National Wetlands Inventory 1984 - 1986



1	2	3
4	5	6
7	8	9

- 1 Skyland
- 2 Fruitland
- 3 Bat Cave
- 4 Horse Shoe
- 5 Cliffside Mountain
- 6 Standingstone Mountain
- 7 Zirconia
- 8 Sallada

ROAD CLASSIFICATION	
Expressway	Local Connector
Secondary Hwy	Local Road
Ramp	4WD
Interstate Route	US Route
	State Route

HENDERSONVILLE, NC
2019

