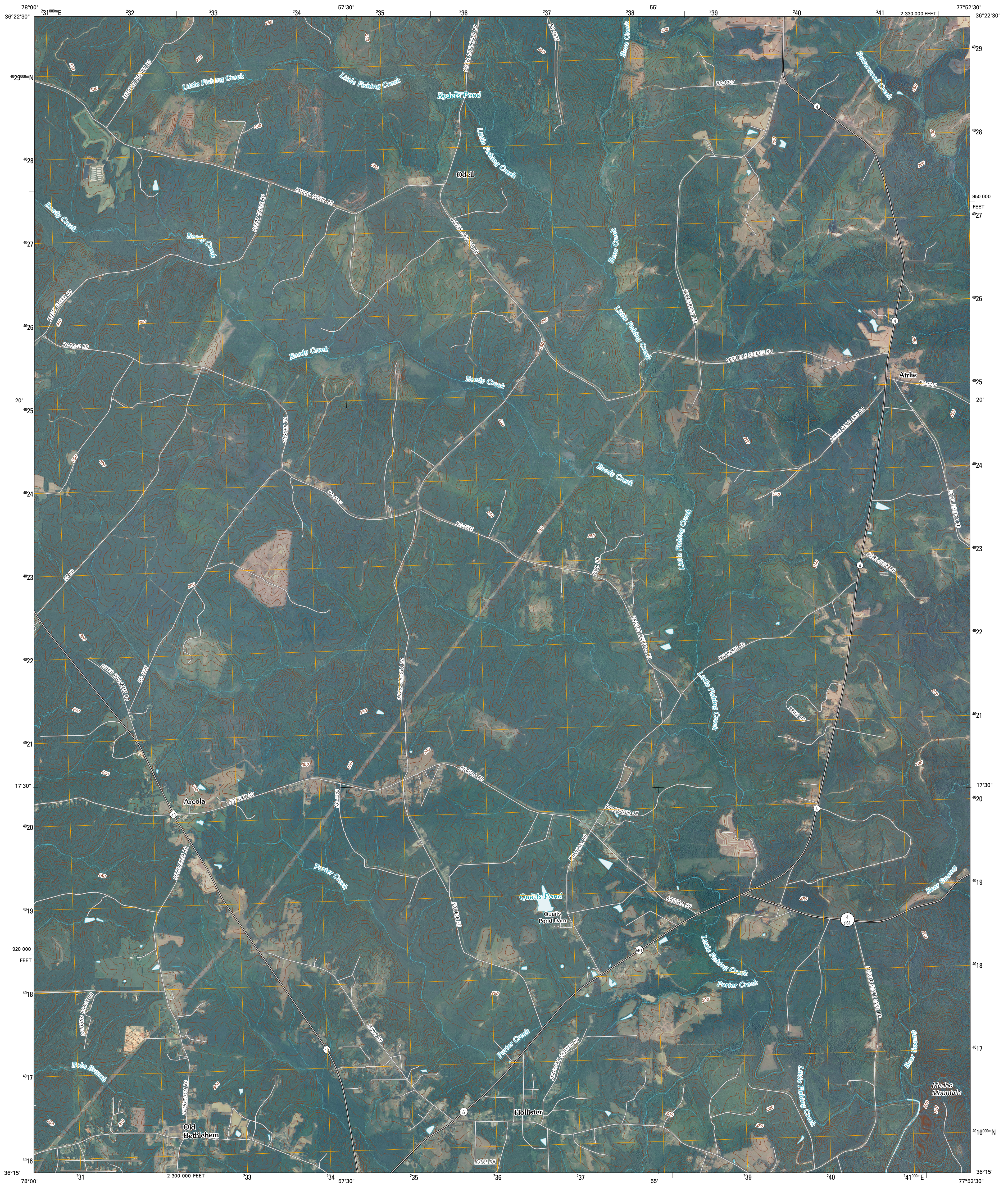




U.S. DEPARTMENT OF THE INTERIOR
U. S. GEOLOGICAL SURVEY



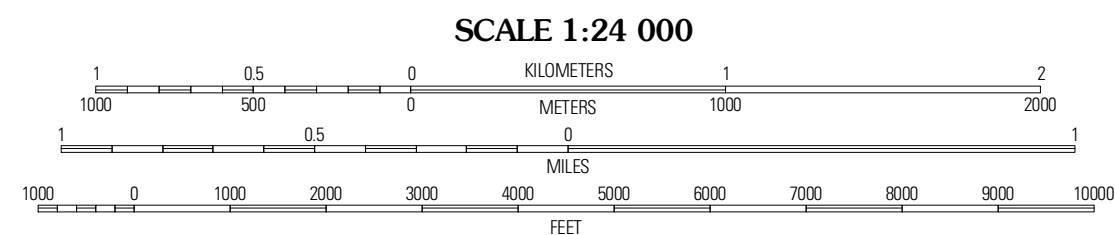
HOLLISTER QUADRANGLE
NORTH CAROLINA
7.5-MINUTE SERIES



Produced by the United States Geological Survey
North American Datum of 1983 (NAD83)
Roads: ©2006-2010 Tele Atlas
Names: ©2006-2010 Tele Atlas
Hydrography: National Hydrography Dataset, 2008
Contours: National Elevation Dataset, 2008

UTM GRID AND 2011 MAGNETIC NORTH DECLINATION AT CENTER OF SHEET

U.S. National Grid
100,000 m Square ID
TF
Grid Zone Designation
18S



ROAD CLASSIFICATION

Interstate Route (thick red line)
US Route (red line)
Ramp (red line with blue triangle)
State Route (thin red line)
Local Road (grey line)
4WD (dashed grey line)

QUADRANGLE LOCATION

Macon	Littleton	Thelma
Inez	Hollister	Auxilion Springs
Centerville	Essex	Ringwood

ADJOINING 7.5' QUADRANGLES

CONTOUR INTERVAL 10 FEET
NORTH AMERICAN VERTICAL DATUM OF 1988

This map was produced to conform with version 0.5.10 of the draft USGS Standards for 7.5-Minute Quadrangle Maps. A metadata file associated with this product is draft version 0.5.11

HOLLISTER, NC
2010