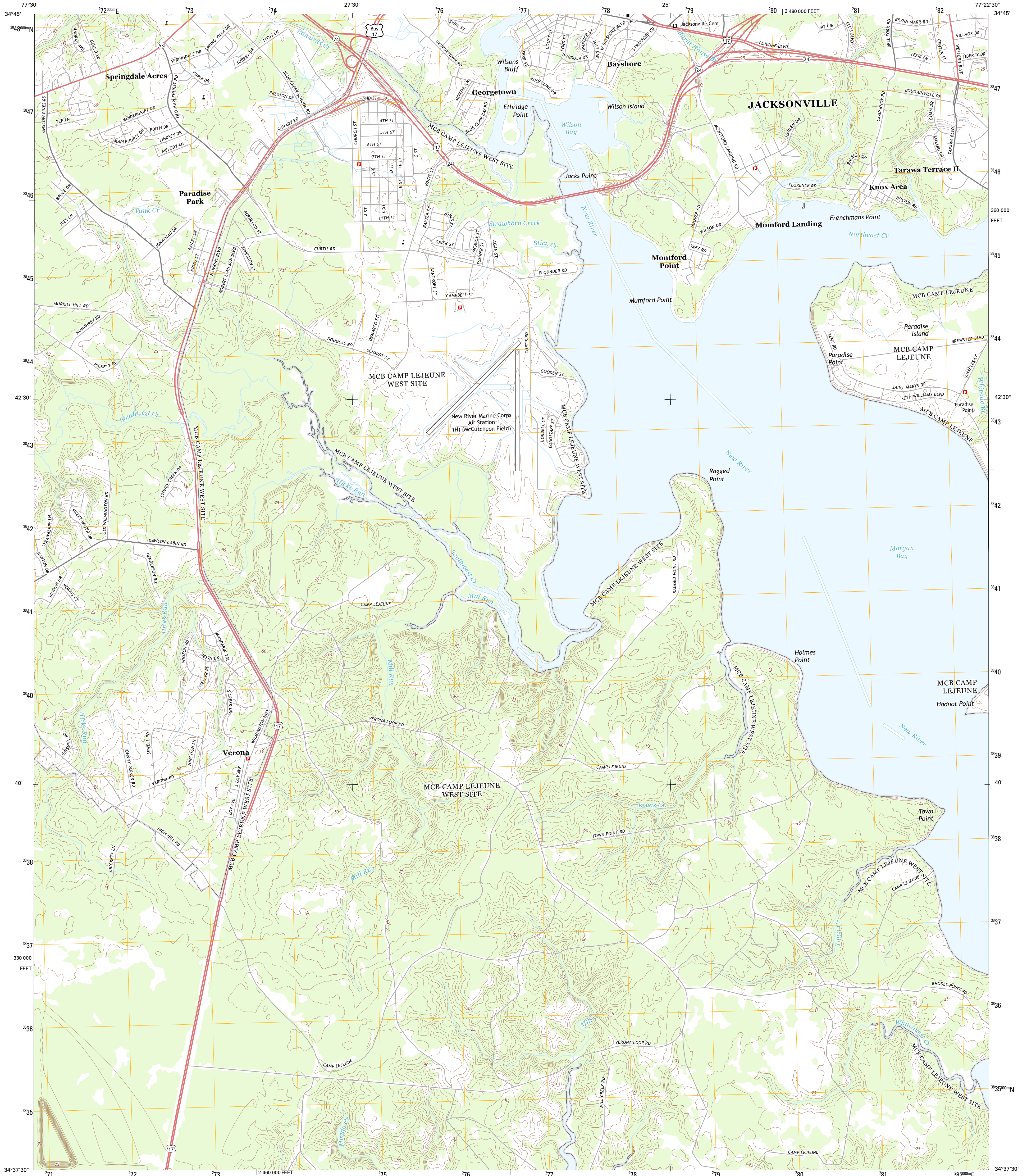




U.S. DEPARTMENT OF THE INTERIOR  
U. S. GEOLOGICAL SURVEY



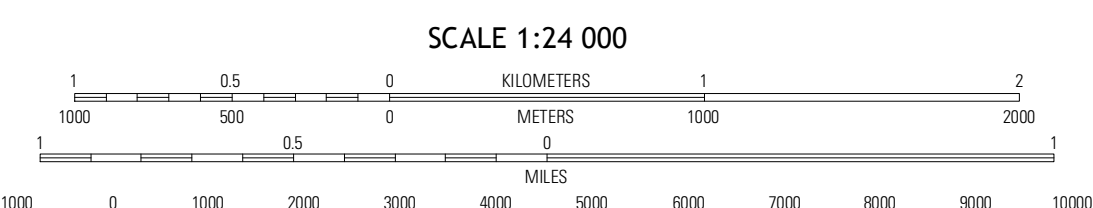
JACKSONVILLE SOUTH QUADRANGLE  
NORTH CAROLINA-ONSLAW CO.  
7.5-MINUTE SERIES



Produced by the United States Geological Survey  
North American Datum of 1983 (NAD83)  
World Geodetic System of 1984 (WGS84). Projection and  
1 000-meter grid: Universal Transverse Mercator, Zone 18S  
10 000-foot ticks: North Carolina Coordinate System of 1983

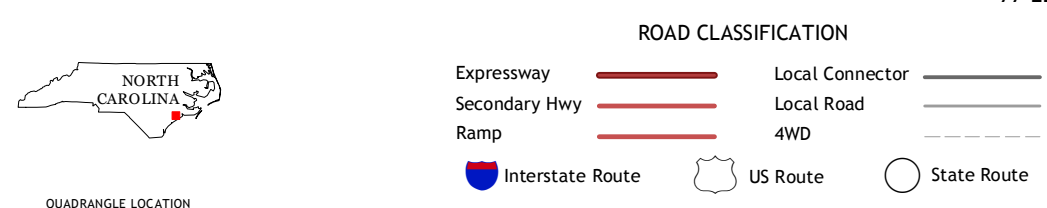
UTM GRID AND 2013 MAGNETIC NORTH  
DECLINATION AT CENTER OF SHEET

U.S. National Grid  
100,000-m Square ID  
TD  
Grid Zone Designation  
18S



CONTOUR INTERVAL 5 FEET  
NORTH AMERICAN VERTICAL DATUM OF 1988

This map was produced to conform with the  
National Geospatial Program US Topo Product Standard, 2011.  
A metadata file associated with this product is draft version 0.6.11



QUADRANGLE LOCATION

Catherine Lake	Jacksonville North	Kellum
Haws Run	Jacksonville South	Camp Lejeune
Fulkstone	Sneads Ferry	New River Inlet

JACKSONVILLE SOUTH, NC  
2013

ADJOINING 7.5 QUADRANGLES