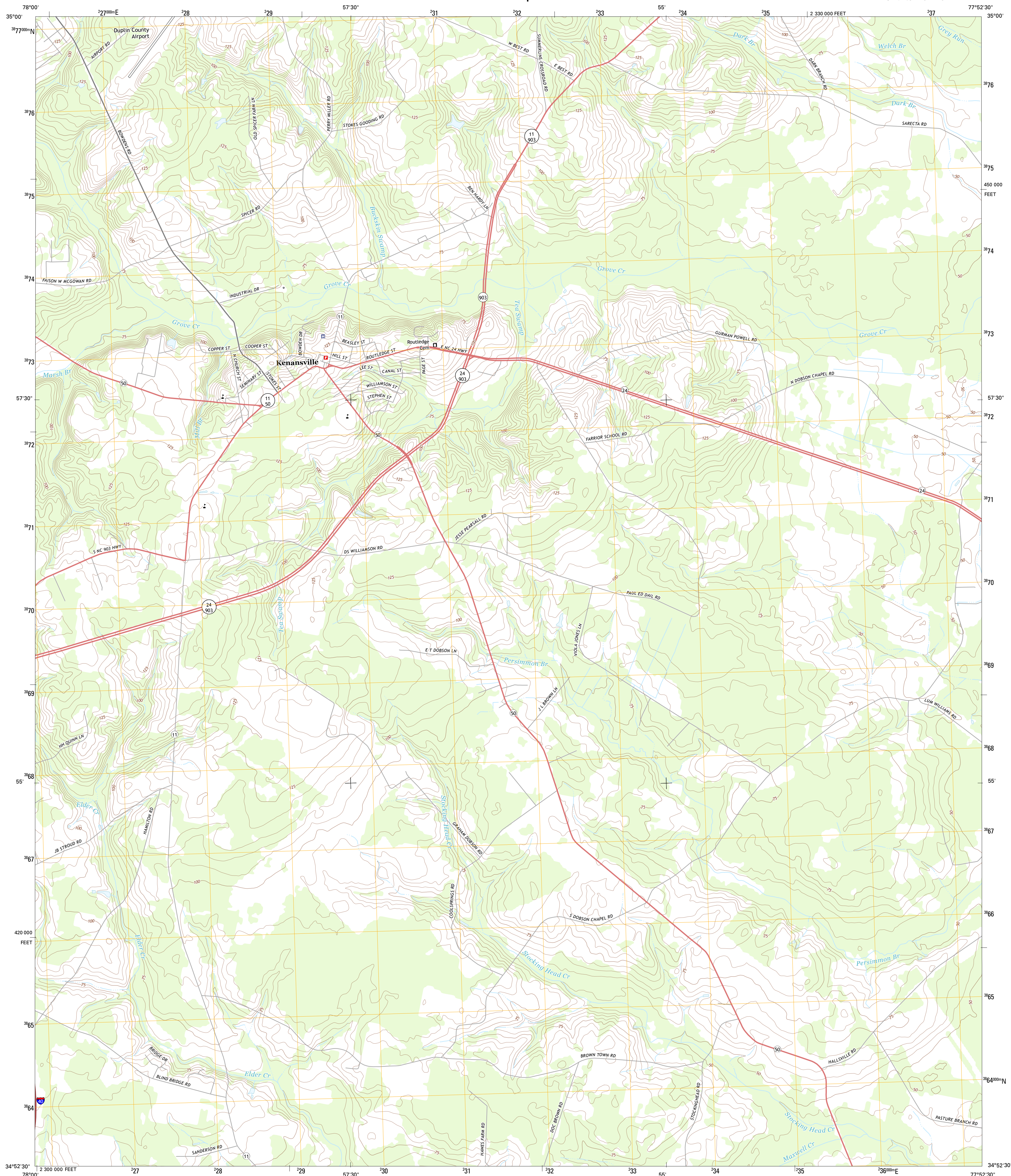




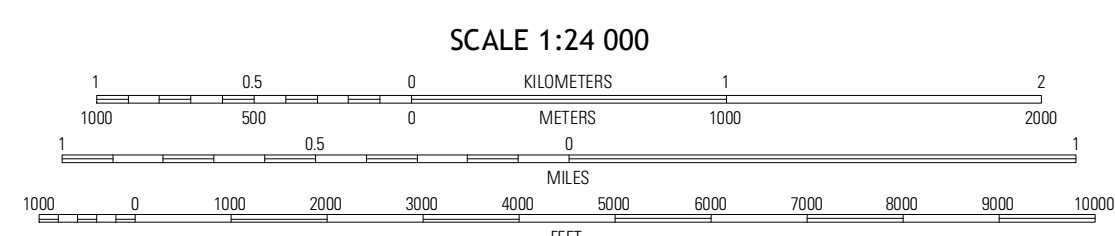
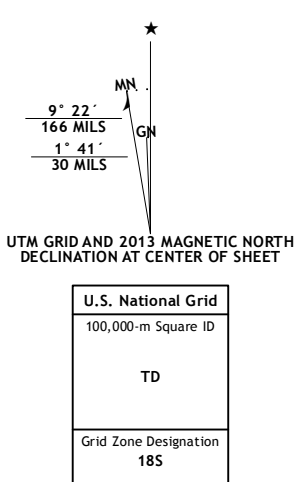
U.S. DEPARTMENT OF THE INTERIOR
U. S. GEOLOGICAL SURVEY



KENANSVILLE QUADRANGLE
NORTH CAROLINA-DUPLIN CO.
7.5-MINUTE SERIES



Produced by the United States Geological Survey
North American Datum of 1983 (NAD83)
World Geodetic System of 1984 (WGS84) Projection and
1 000-meter grid: Universal Transverse Mercator, Zone 18S
10 000-foot ticks: North Carolina Coordinate System of 1983



ROAD CLASSIFICATION	
	Expressway
	Secondary Hwy
	Ramp
	Interstate Route
	US Route
	State Route
	Local Connector
	Local Road
	4WD

QUADRANGLE LOCATION		
Warsaw North	Summerlina Crossroads	Albertson
Warsaw South	Kenansville	Beulaville
Rose Hill	Charity	Chinquapin

CONTOUR INTERVAL 5 FEET
NORTH AMERICAN VERTICAL DATUM OF 1988
This map was produced to conform with the National Geospatial Program US Topo Product Standard, 2011. A metadata file associated with this product is draft version 0.6.11

KENANSVILLE, NC
2013

ADJOINING 7.5 QUADRANGLES