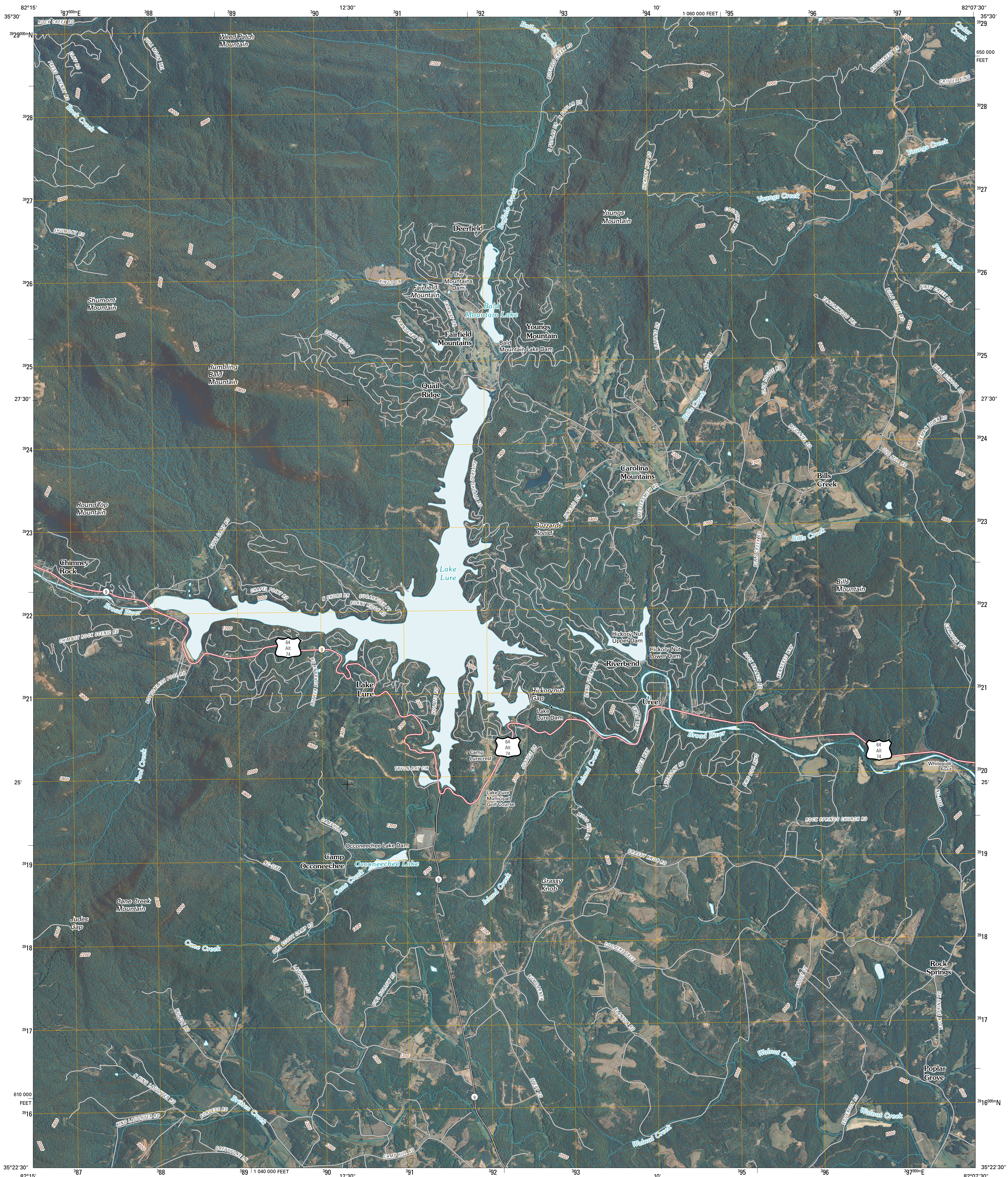




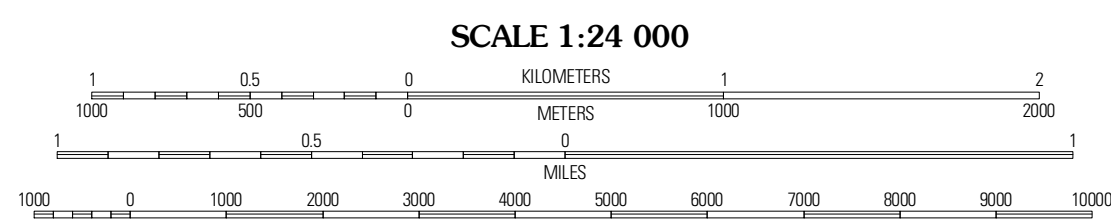
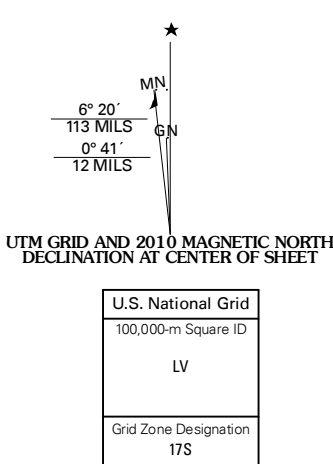
U.S. DEPARTMENT OF THE INTERIOR
U. S. GEOLOGICAL SURVEY



LAKE LURE QUADRANGLE
NORTH CAROLINA
7.5-MINUTE SERIES



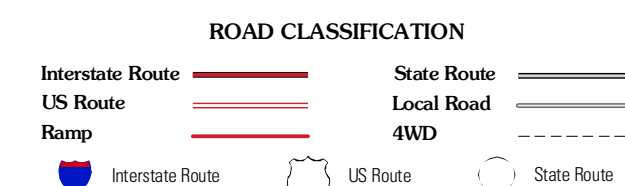
Produced by the United States Geological Survey
North American Datum of 1983 (NAD83)
Roads: 2006-2010 Tele Atlas
World Geodetic System of 1984 (WGS84) Projection and
1 000-meter grid; Universal Transverse Mercator, Zone 17S
10 000-foot ticks; North Carolina Coordinate System of 1983



QUADRANGLE LOCATION

Black Mountain	Moffitt Hill	Sugar Hill
Bar Cave	Lake Lure	Shingle Hollow
Cliffed Mountain	Mill Spring	Pea Ridge

ADJOINING 7.5' QUADRANGLES



Imagery: NAI, June 2008
Roads: 2006-2010 Tele Atlas
Names: GNIS, 2008
Hydrography: National Hydrography Dataset, 2008
Contours: National Elevation Dataset, 2008

CONTOUR INTERVAL 40 FEET
NORTH AMERICAN VERTICAL DATUM OF 1988

This map was produced to conform with version 0.5.10 of the draft USGS Standards for 7.5-Minute Quadrangle Maps. A metadata file associated with this product is draft version 0.5.11

LAKE LURE, NC
2010