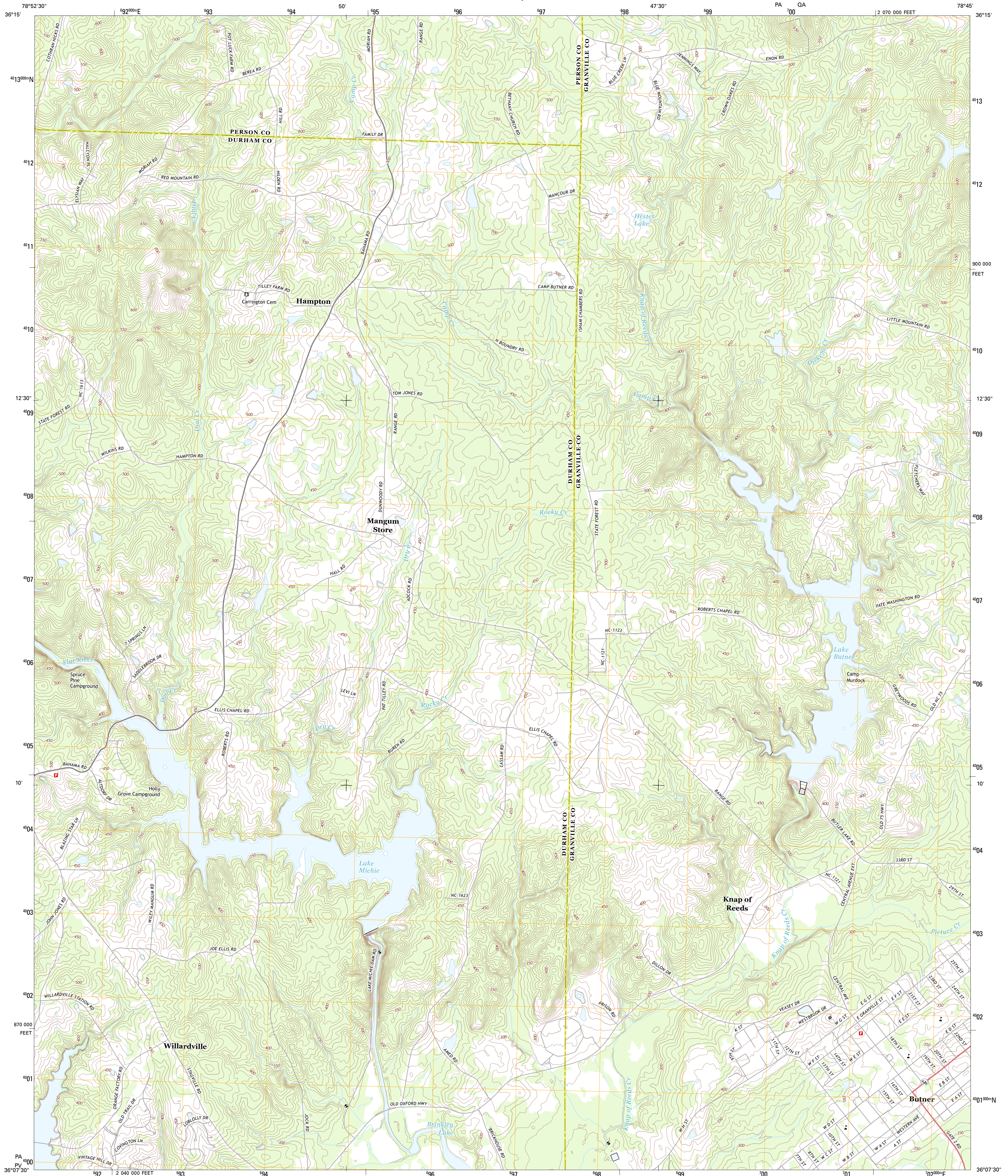




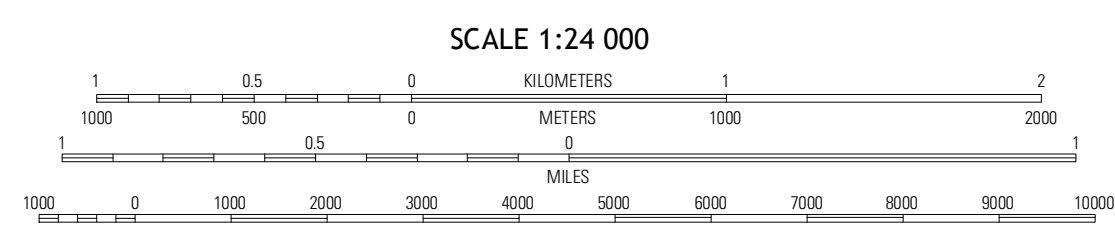
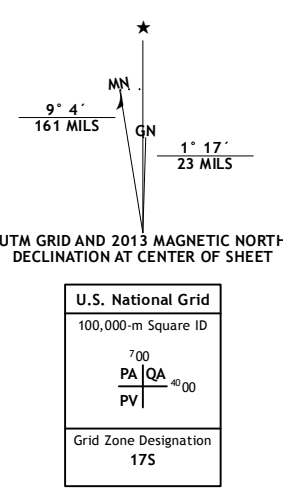
U.S. DEPARTMENT OF THE INTERIOR  
U. S. GEOLOGICAL SURVEY



LAKE MICHIE QUADRANGLE  
NORTH CAROLINA  
7.5-MINUTE SERIES



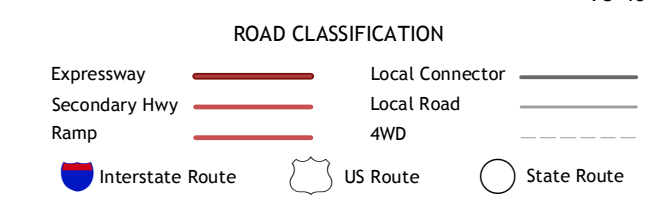
Produced by the United States Geological Survey  
North American Datum of 1983 (NAD83)  
World Geodetic System of 1984 (WGS84) Projection and  
1 000-meter grid: Universal Transverse Mercator, Zone 17S  
10 000-foot ticks: North Carolina Coordinate System of 1983



QUADRANGLE LOCATION

Timberlake	Morrah	Berea
Bouquont	Lake Michie	Stem
Northwest Durham	Northeast Durham	Creedmoor

ADJOINING 7.5 QUADRANGLES



CONTOUR INTERVAL 10 FEET  
NORTH AMERICAN VERTICAL DATUM OF 1988

This map was produced to conform with the National Geospatial Program US Topo Product Standard, 2011. A metadata file associated with this product is draft version 0.6.11

LAKE MICHIE, NC  
2013