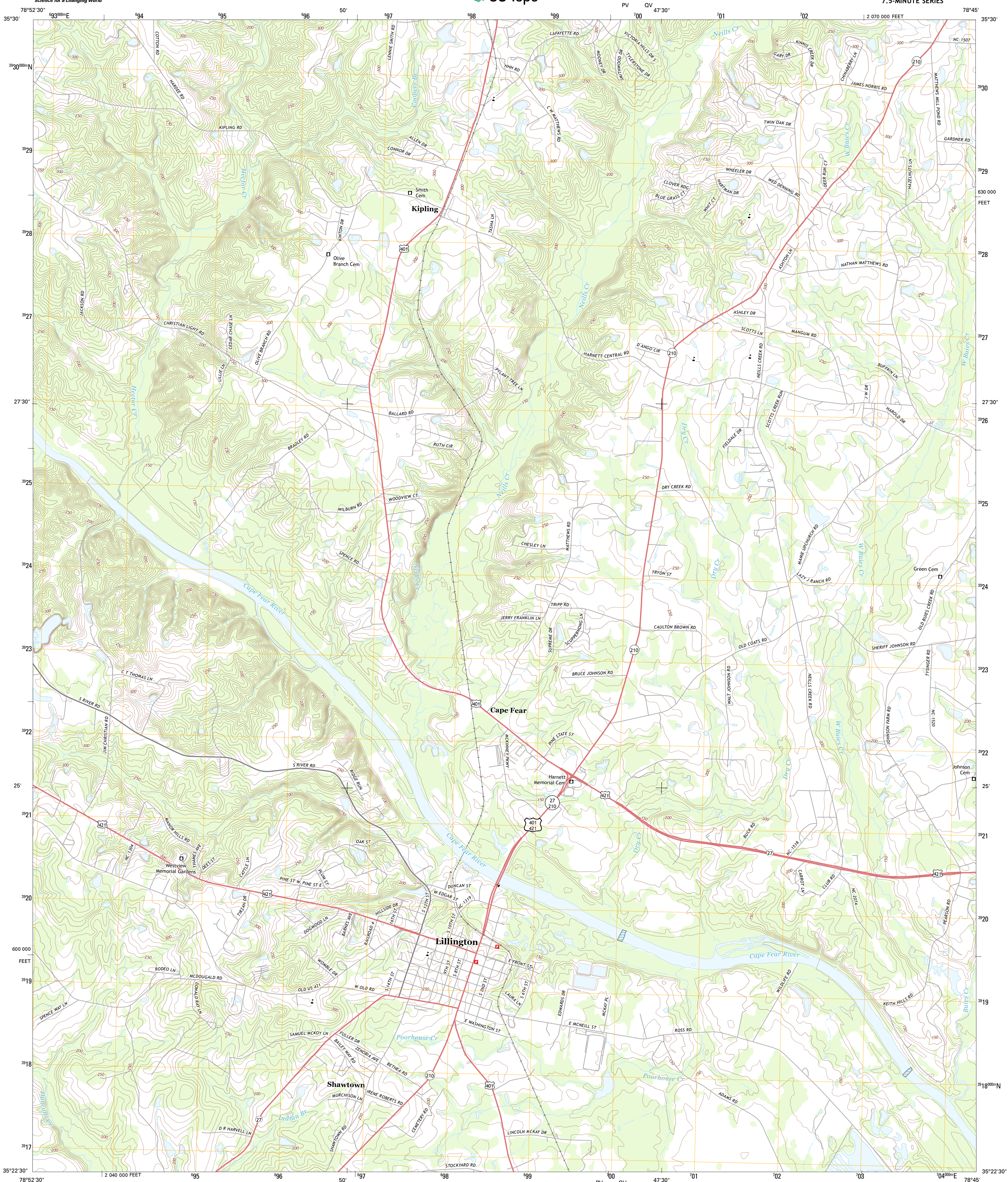




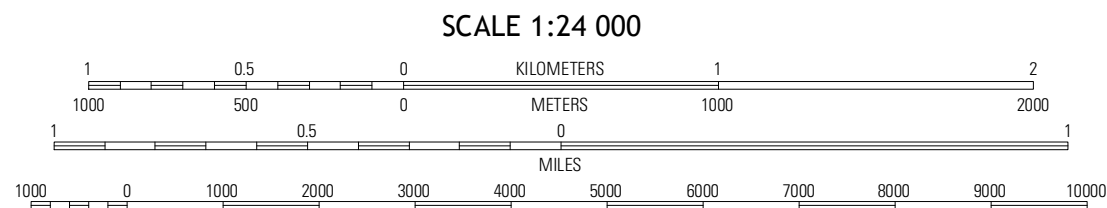
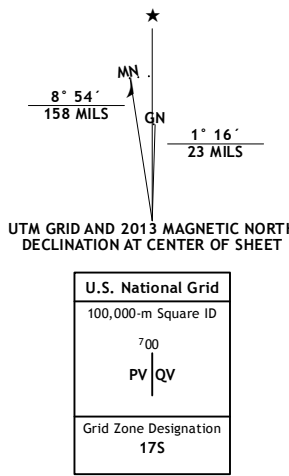
U.S. DEPARTMENT OF THE INTERIOR
U. S. GEOLOGICAL SURVEY



LILLINGTON QUADRANGLE
NORTH CAROLINA-HARNETT CO.
7.5-MINUTE SERIES

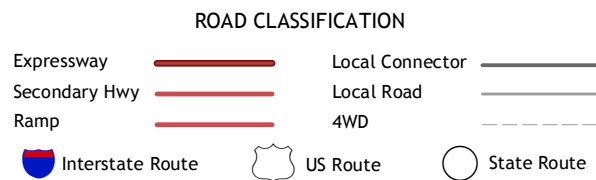


Produced by the United States Geological Survey
North American Datum of 1983 (NAD83)
World Geodetic System of 1984 (WGS84) Projection and
1 000-meter grid: Universal Transverse Mercator, Zone 17S
10 000-foot ticks: North Carolina Coordinate System of 1983



Cokesbury	Puquay-Virnia	Angier
Mamers	Lillington	Couts
Anderson Creek	Bunnlevel	Erwin

ADJOINING 7.5 QUADRANGLES



LILLINGTON, NC
2013