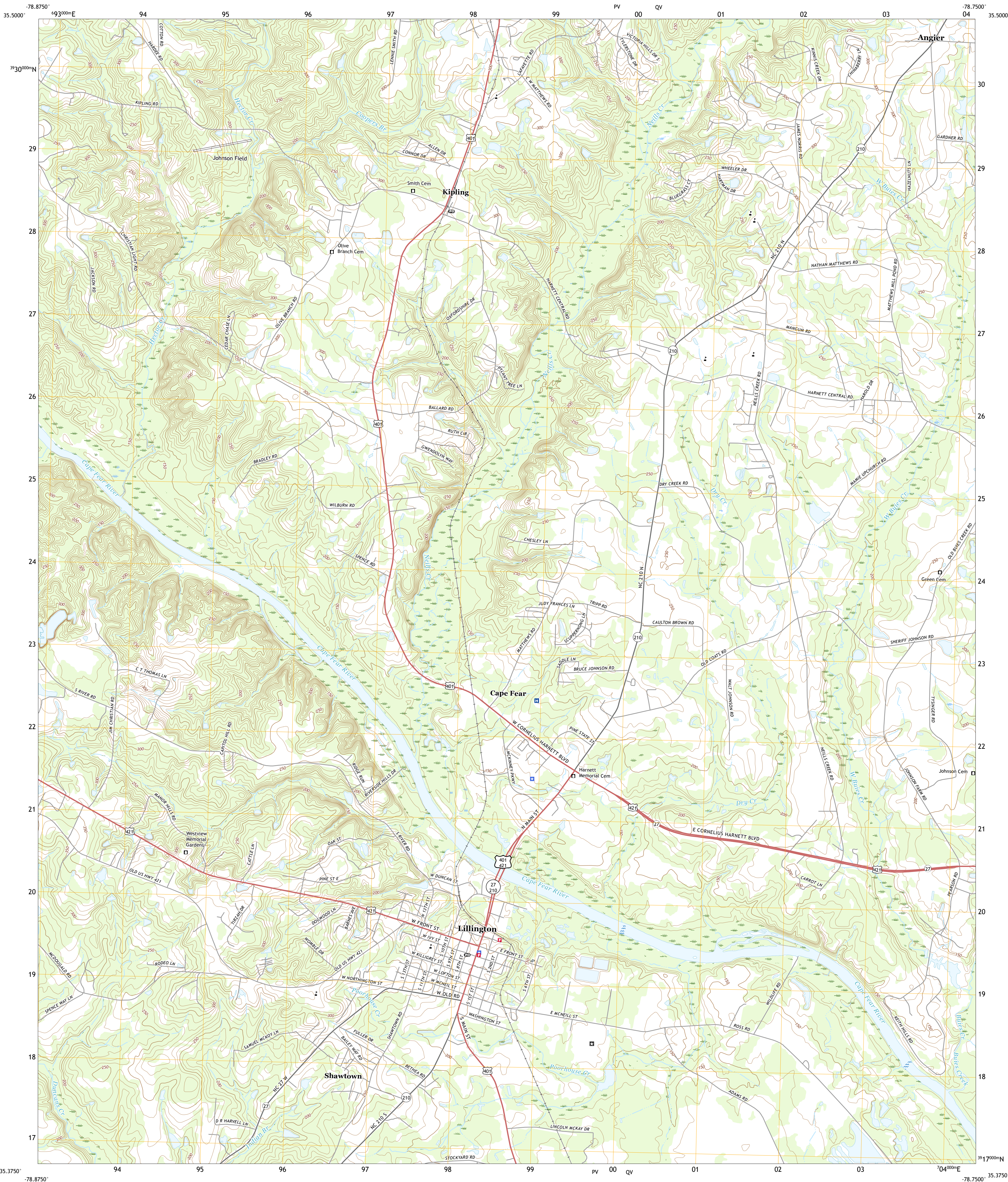




U.S. DEPARTMENT OF THE INTERIOR
U.S. GEOLOGICAL SURVEY



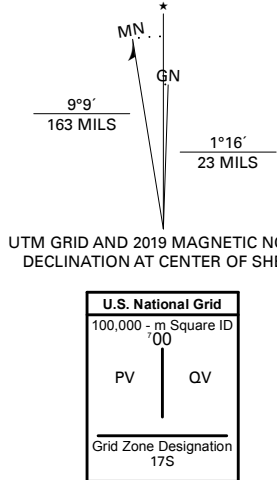
LILLINGTON QUADRANGLE
NORTH CAROLINA - HARNETT COUNTY
7.5-MINUTE SERIES



Produced by the United States Geological Survey

North American Datum of 1983 (NAD83)
World Geodetic System of 1984 (WGS84) - Projection and
1 000-meter grid/Universal Transverse Mercator, Zone 17S
This map is not a legal document. Boundaries may be
generalized for this map scale. Private lands within government
reservations may not be shown. Obtain permission before
entering private lands.

Imagery.....NAIP, May 2016 - November 2016
Roads.....U.S. Census Bureau, 2016
Names.....GNIS, 1980 - 2018
Hydrography.....National Hydrography Dataset, 1989 - 2018
Contours.....National Elevation Dataset, 2008
Boundaries.....Multiple sources; see metadata file 2017 - 2018
Wetlands.....FWS National Wetlands Inventory 1983



QUADRANGLE LOCATION

1	2	3
4	5	6
7	8	9

- 1 Cokesbury
- 2 Fuquay-Varina
- 3 Angier
- 4 Womersley
- 5 Coats
- 6 Anderson Creek
- 7 Bennettsville
- 8 Erwin

ROAD CLASSIFICATION

Expressway	Local Connector
Secondary Hwy	Local Road
Ramp	4WD
Interstate Route	US Route
	State Route

LILLINGTON, NC
2019



NSN 7540-01-603-928
USGS REF. NO. USGSX24K25684