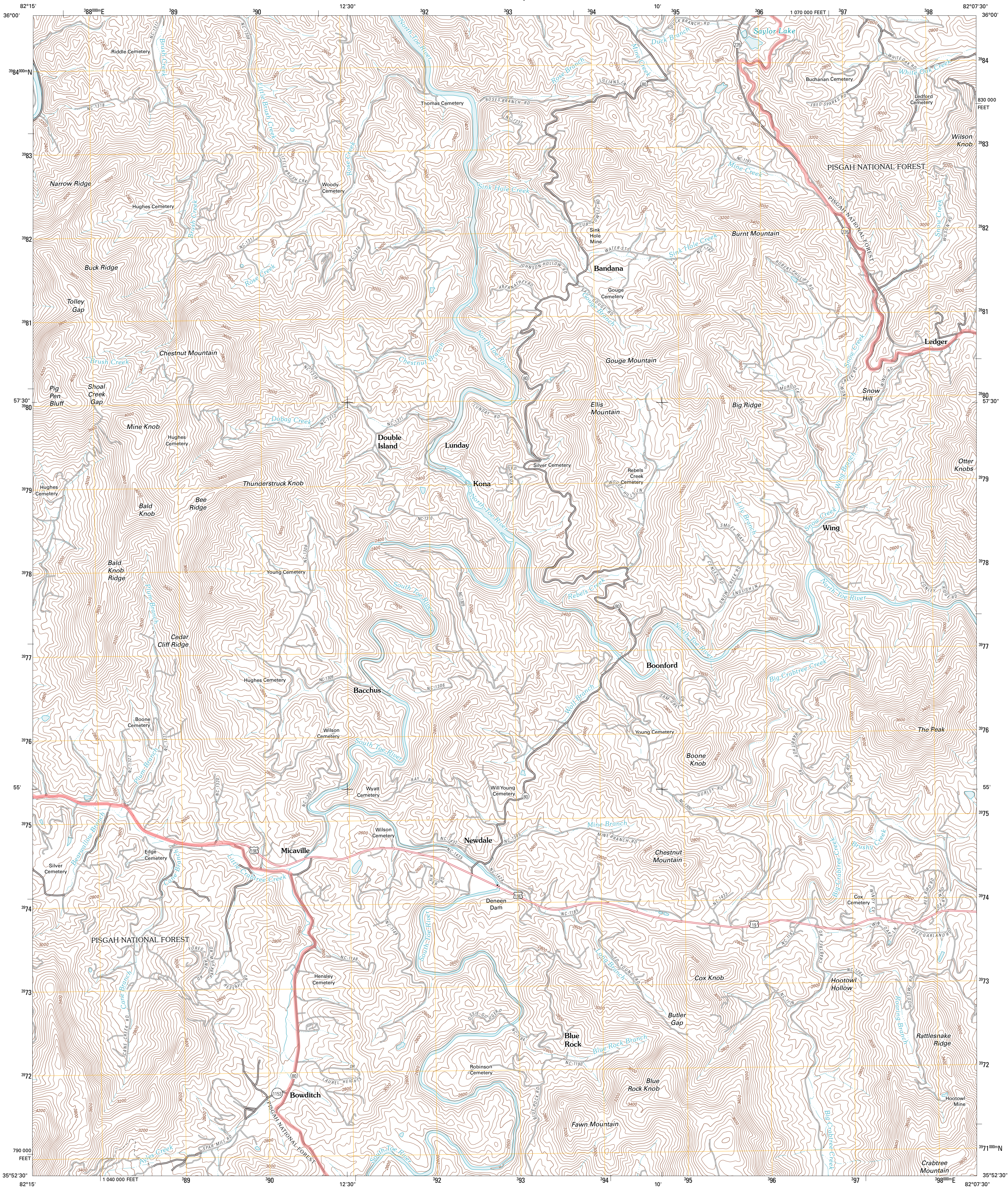




U.S. DEPARTMENT OF THE INTERIOR  
U. S. GEOLOGICAL SURVEY



MICAVILLE QUADRANGLE  
NORTH CAROLINA  
7.5-MINUTE SERIES

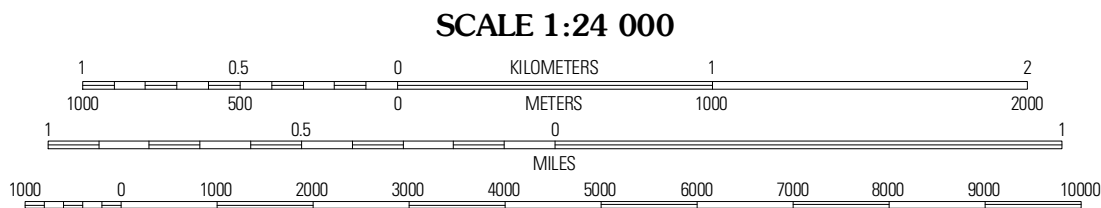


Produced by the United States Geological Survey  
North American Datum of 1983 (NAD83)  
World Geodetic System of 1984 (WGS84) Projection and  
10 000-meter grid: Universal Transverse Mercator, Zone 17S  
10 000-foot ticks: North Carolina Coordinate System of 1983

Imagery.....NAIP, September 2009  
Roads.....©2006-2010 Tele Atlas  
Roads within US Forest Service Lands.....FS Topo Data  
with limited Forest Service updates, 2009  
Names.....GNS, 2010  
Hydrography.....National Hydrography Dataset, 2009  
Contours.....National Elevation Dataset, 2008

UTM GRID AND 2011 MAGNETIC NORTH  
DECLINATION AT CENTER OF SHEET

U.S. National Grid 100,000m Square ID
LV
Grid Zone Designation 17S



CONTOUR INTERVAL 40 FEET  
NORTH AMERICAN VERTICAL DATUM OF 1988

This map was produced to conform with version 0.5.10 of the  
draft USGS Standards for 7.5-Minute Quadrangle Maps.  
A metadata file associated with this product is draft version 0.5.12



Huntville	Bakersville	Carvers Gap
Burnsville	Micaville	Spruce Pine
Mount Mitchell	Celo	Little Switzerland

ROAD CLASSIFICATION

Interstate Route	State Route
US Route	Local Road
Ramp	4WD

Interstate Route  
US Route  
FS Primary Route  
US Route  
FS Passenger Route  
FS High Clearance Route

Check with local Forest Service unit  
for current travel conditions and restrictions.

MICAVILLE, NC  
2011