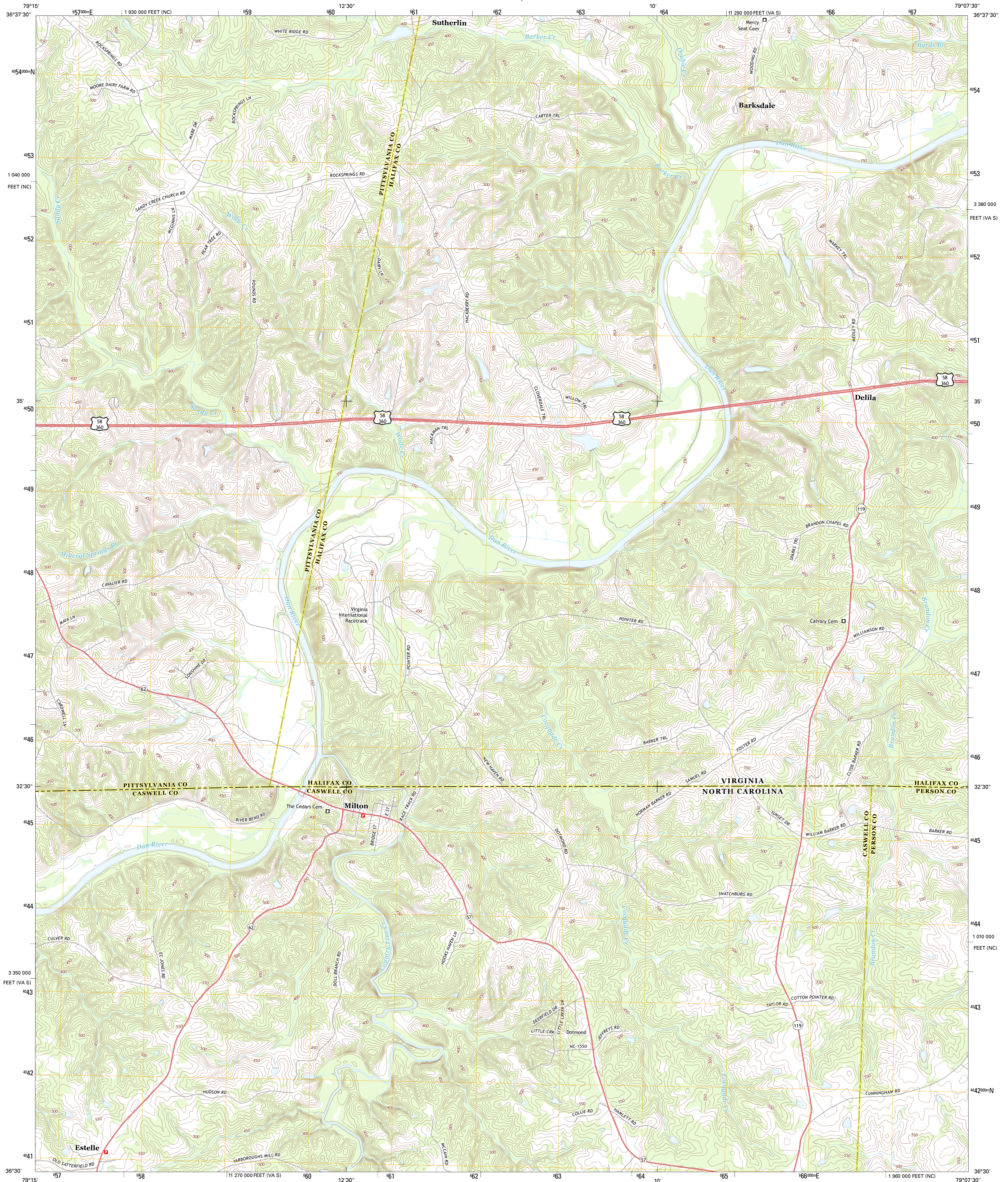




U.S. DEPARTMENT OF THE INTERIOR  
U. S. GEOLOGICAL SURVEY

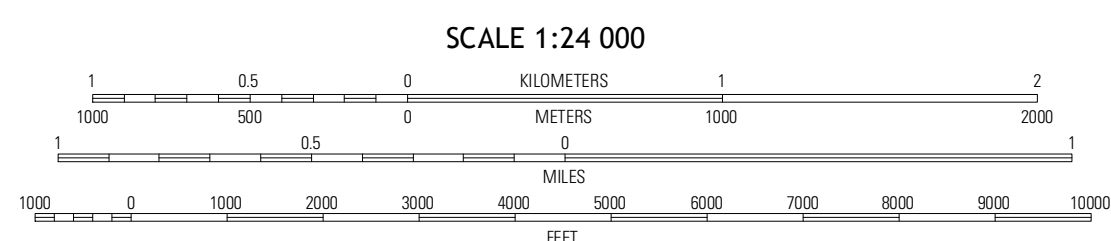
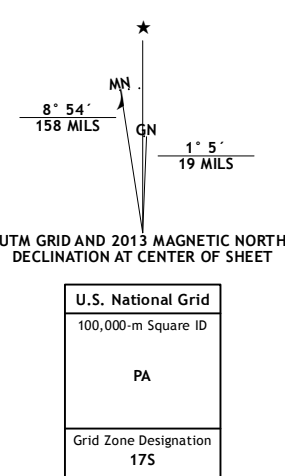


MILTON QUADRANGLE  
NORTH CAROLINA-VIRGINIA  
7.5-MINUTE SERIES



Produced by the United States Geological Survey  
North American Datum of 1983 (NAD83)  
World Geodetic System of 1984 (WGS84) Projection and  
1 000-meter grid: Universal Transverse Mercator, Zone 17S  
10 000-foot ticks: Virginia Coordinate System of 1983 (south zone), North Carolina Coordinate System of 1983

Imagery: N.A.I.P. May 2012  
Roads: 2006-2012 TomTom  
Names: GNIS, 2013  
Hydrography: National Hydrography Dataset, 2012  
Contours: National Elevation Dataset, 2010  
Boundaries: Census, IBWC, USGS, 1972 - 2012



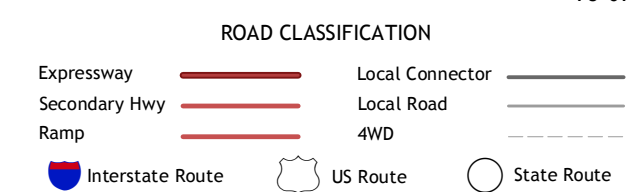
CONTOUR INTERVAL 10 FEET  
NORTH AMERICAN VERTICAL DATUM OF 1988

This map was produced to conform with the National Geospatial Program US Topo Product Standard, 2011. A metadata file associated with this product is draft version 0.6.11



QUADRANGLE LOCATION

Blains	Ingram	Oak Level
Ringold	Milton	Altun
Yanceyville	Leahburg	Olive Hill



MILTON, NC-VA  
2013

ADJOINING 7.5 QUADRANGLES