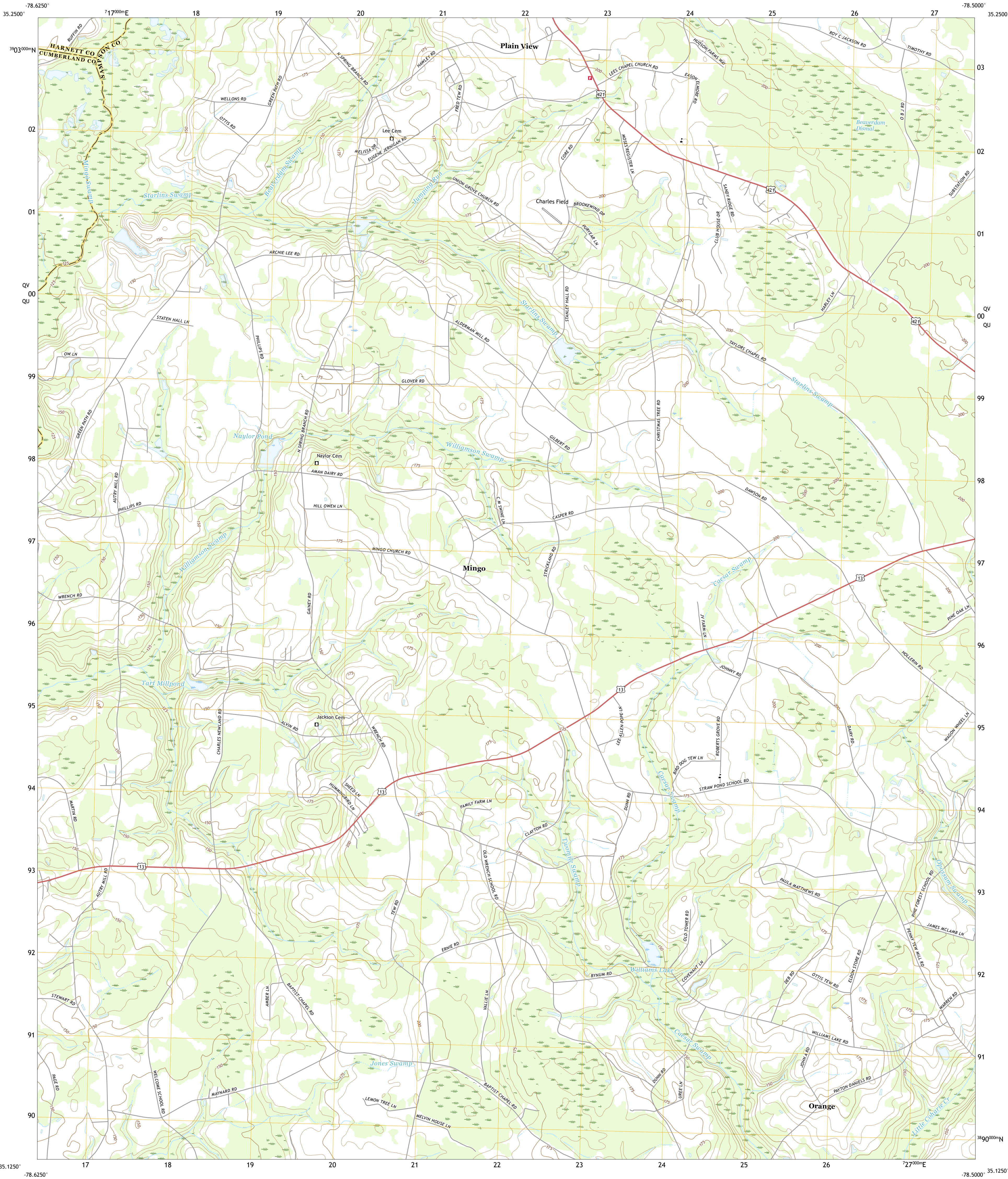




U.S. DEPARTMENT OF THE INTERIOR
U.S. GEOLOGICAL SURVEY



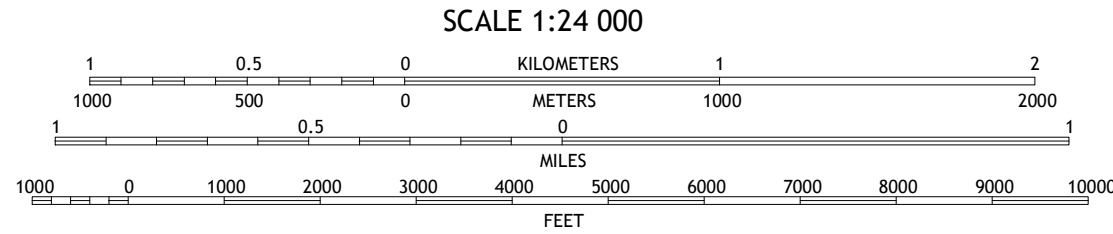
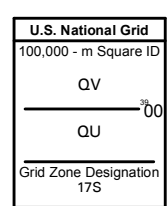
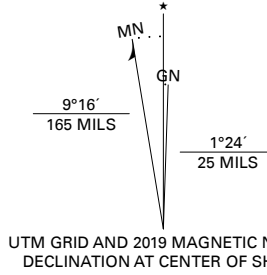
MINGO QUADRANGLE
NORTH CAROLINA
7.5-MINUTE SERIES



Produced by the United States Geological Survey

North American Datum of 1983 (NAD83)
World Geodetic System of 1984 (WGS84) - Projection and
1 000-meter grid/Universal Transverse Mercator, Zone 17S
This map is not a legal document. Boundaries may be
generalized for this map scale. Private lands within government
reservations may not be shown. Obtain permission before
entering private lands.

Imagery.....NAIP, May 2016 - November 2016
Roads.....U.S. Census Bureau, 2016
Names.....GNIS, 1980 - 2016
Hydrography.....National Hydrography Dataset, 1899 - 2018
Contours.....National Elevation Dataset, 2008
Boundaries.....Multiple sources; see metadata file 2017 - 2018
Wetlands.....FWS National Wetlands Inventory 1983



CONTOUR INTERVAL 5 FEET
NORTH AMERICAN VERTICAL DATUM OF 1988
This map was produced to conform with the
National Geospatial Program US Topo Product Standard, 2011.
A metadata file associated with this product is draft version 0.6.18



QUADRANGLE LOCATION

1	2	3
4	5	6
7	8	9

1 Erwin
2 Dunn
3 Peacocks Crossroads
4 Wade
5 Timothy
6 Stedman
7 Salemburg
8 Bearskin

ROAD CLASSIFICATION
Expressway
Secondary Hwy
Ramp
Local Connector
Local Road
4WD
US Route
State Route

MINGO, NC
2019

