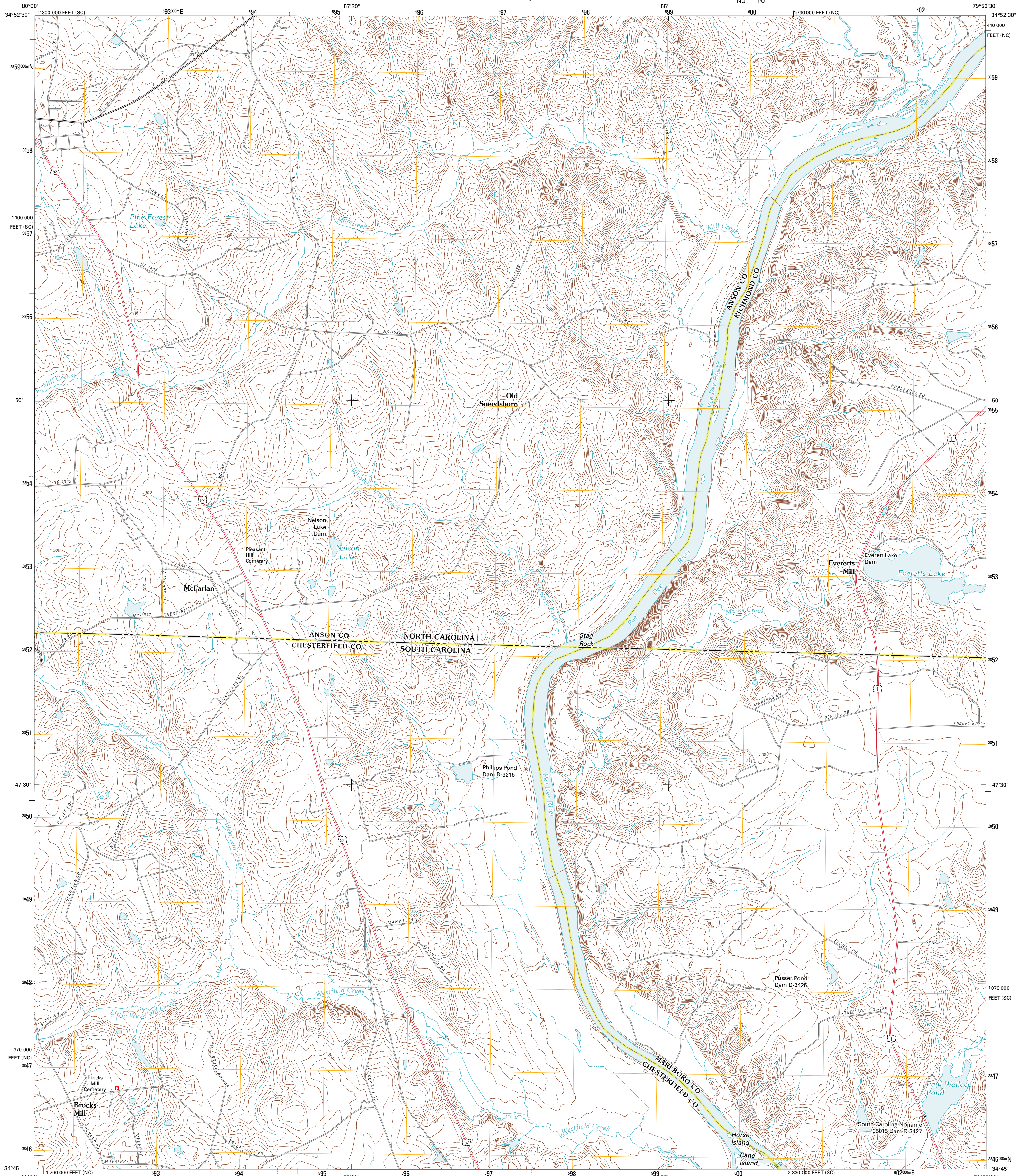




U.S. DEPARTMENT OF THE INTERIOR  
U. S. GEOLOGICAL SURVEY

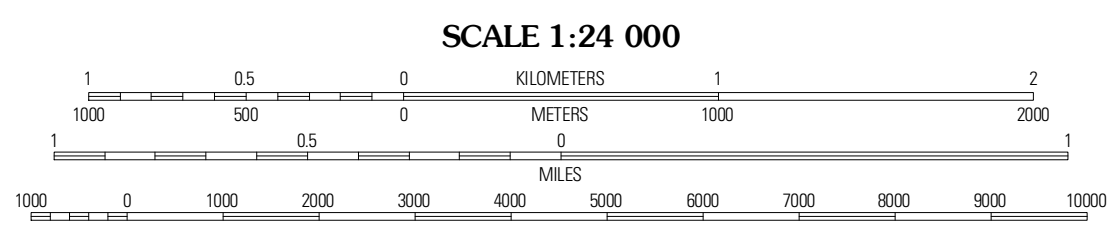
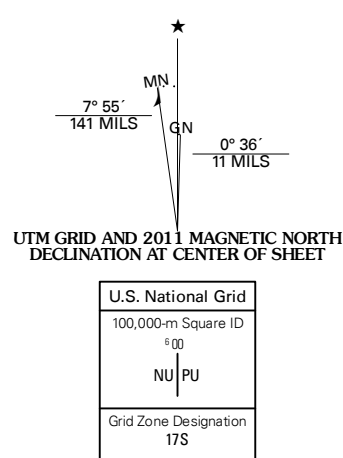


MORVEN EAST QUADRANGLE  
NORTH CAROLINA-SOUTH CAROLINA  
7.5-MINUTE SERIES



Produced by the United States Geological Survey  
North American Datum of 1983 (NAD83)  
World Geodetic System of 1984 (WGS84), Projection and  
1 000-foot ticks: North Carolina Coordinate System of  
1983, South Carolina Coordinate System of 1983

Imagery.....NAP, August 2009 - September 2009  
Roads.....©2006-2010 Tele Atlas  
Names.....GNIS, 2010  
Hydrography.....National Hydrography Dataset, 2009  
Contours.....National Elevation Dataset, 2009  
Boundaries.....Census, IBWC, IBC, USGS, 1972 - 2010



CONTOUR INTERVAL 10 FEET  
NORTH AMERICAN VERTICAL DATUM OF 1988  
This map was produced to conform with version 0.5.10  
of the USGS US Topo Product Standard.  
A metadata file associated with this product is draft version 0.5.16

**ROAD CLASSIFICATION**

- Interstate Route
- US Route
- Ramp
- State Route
- Local Road
- 4WD

**QUADRANGLE LOCATION**

Wadesboro	Lilesville	Rockingham
Morven West	Morven East	Diggs
Chesterfield	Cherow	Wallace

ADJOINING 7.5 QUADRANGLES

**MORVEN EAST, NC-SC  
2011**