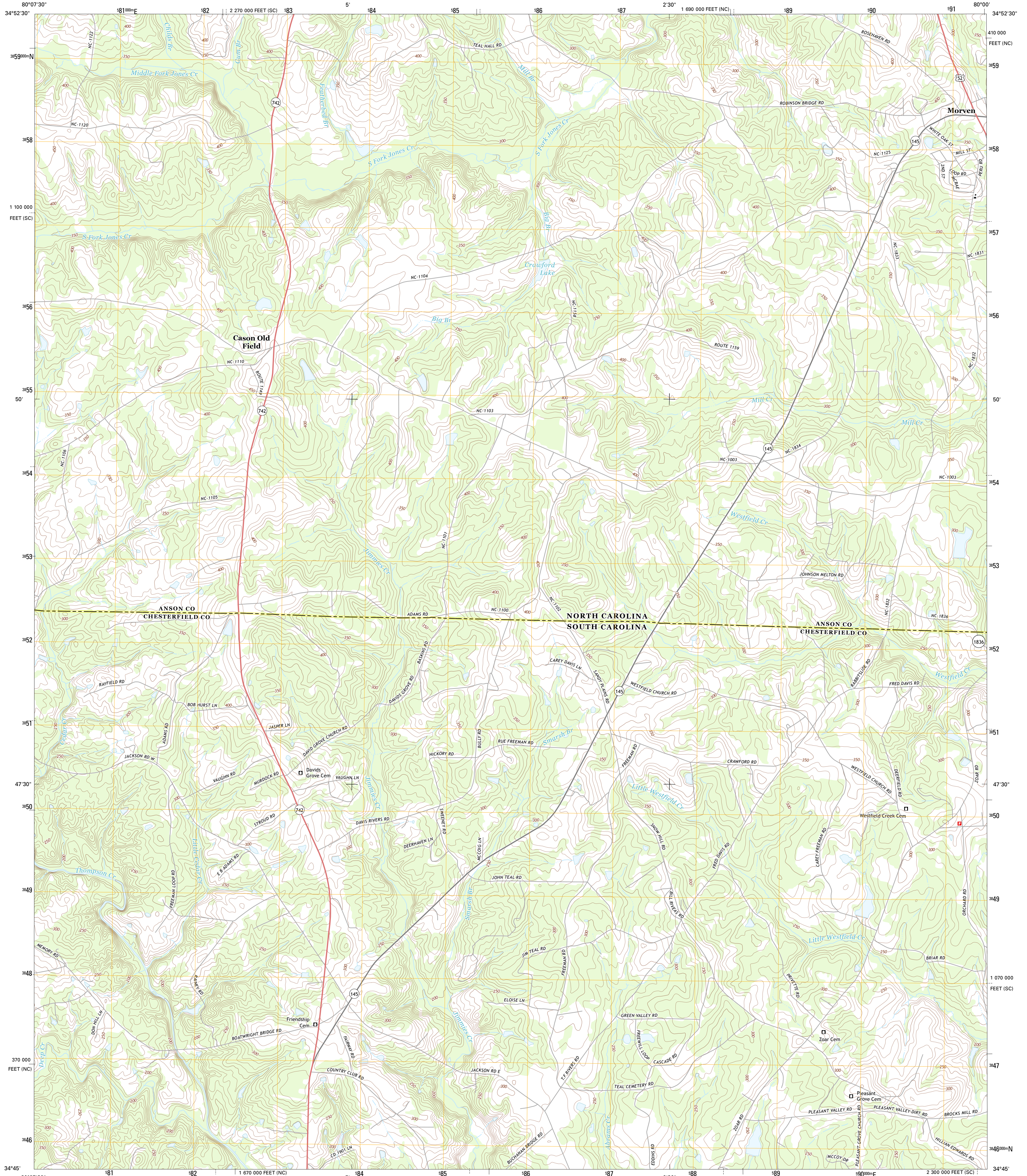




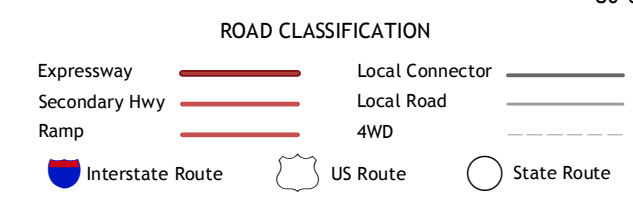
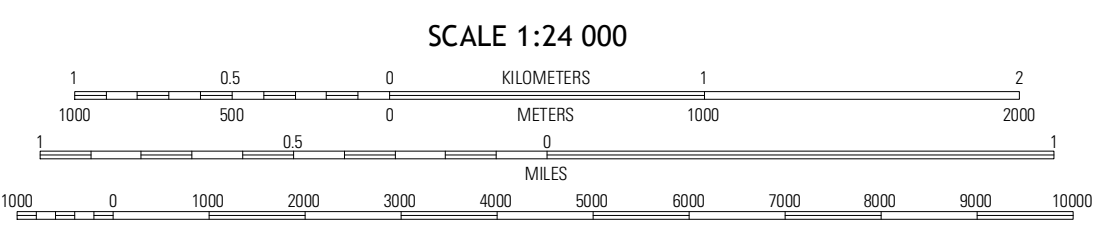
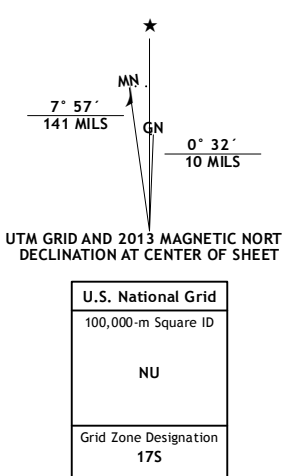
U.S. DEPARTMENT OF THE INTERIOR  
U. S. GEOLOGICAL SURVEY



MORVEN WEST QUADRANGLE  
NORTH CAROLINA-SOUTH CAROLINA  
7.5-MINUTE SERIES



Produced by the United States Geological Survey  
North American Datum of 1983 (NAD83)  
World Geodetic System of 1984 (WGS84). Projection and  
1 000-foot ticks: North Carolina Coordinate System of 1983,  
South Carolina Coordinate System of 1983



QUADRANGLE LOCATION

Russellville	Wadesboro	Lilesville
Mount Croghan	Morven West	Morven East
Raby	Chesterfield	Cheraw

ADJOINING 7.5 QUADRANGLES

CONTOUR INTERVAL 10 FEET  
NORTH AMERICAN VERTICAL DATUM OF 1988  
This map was produced to conform with the  
National Geospatial Program US Topo Product Standard, 2011.  
A metadata file associated with this product is draft version 0.6.11

MORVEN WEST, NC-SC  
2013