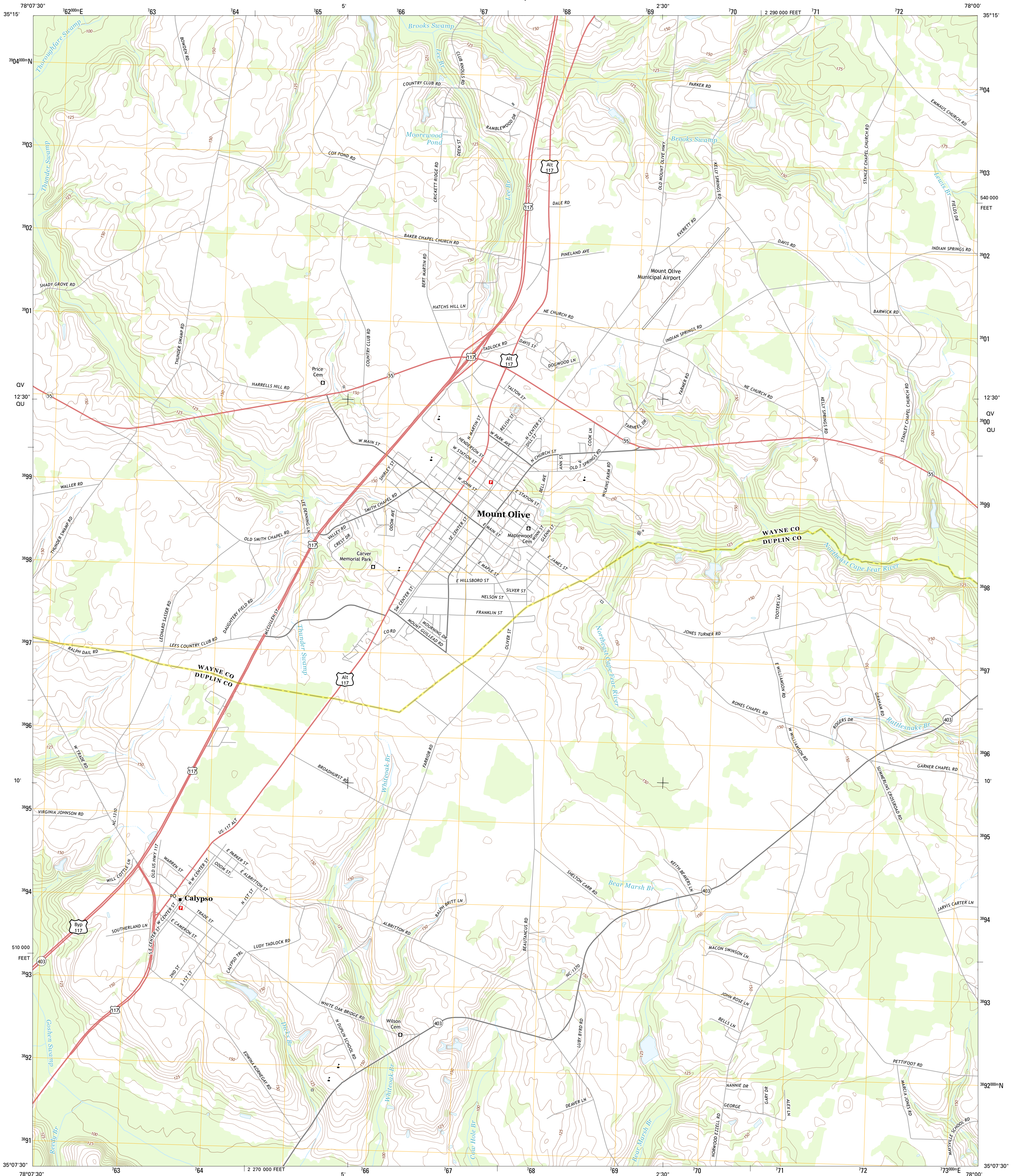




U.S. DEPARTMENT OF THE INTERIOR
U. S. GEOLOGICAL SURVEY



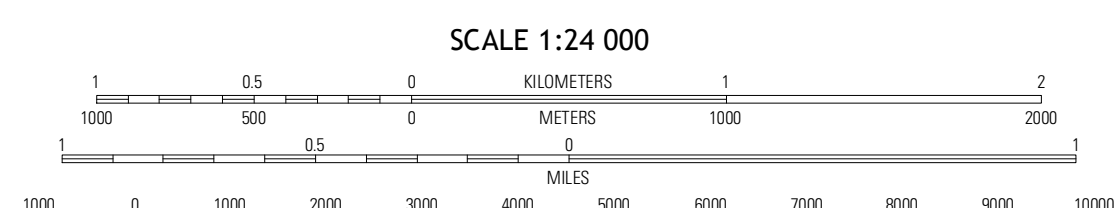
MOUNT OLIVE QUADRANGLE
NORTH CAROLINA
7.5-MINUTE SERIES



Produced by the United States Geological Survey
North American Datum of 1983 (NAD83)
World Geodetic System of 1984 (WGS84)
1 000-meter grid; Universal Transverse Mercator; Zone 17S
10 000-foot ticks; North Carolina Coordinate System of 1983

UTM GRID AND 2011 MAGNETIC NORTH DECLINATION AT CENTER OF SHEET

| | |
|-----------------------|---------------------|
| U.S. National Grid | 100,000-m Square ID |
| QU | 17S |
| Grid Zone Designation | 17S |



QUADRANGLE LOCATION

| | | |
|--------------|---------------------|--------------------|
| Grandthorpe | Southwest Goldsboro | South Goldsboro |
| Dobbersville | Mount Olive | Williams |
| Faison | Warsaw North | Summers Crossroads |

ROAD CLASSIFICATION

- Expressway
- Secondary Hwy
- Ramp
- Interstate Route
- Local Connector
- Local Road
- 4WD
- US Route
- State Route

CONTOUR INTERVAL 5 FEET
NORTH AMERICAN VERTICAL DATUM OF 1988

This map was produced to conform with the National Geospatial Program US Topo Product Standard, 2011. A metadata file associated with this product is draft version 0.6.11

MOUNT OLIVE, NC
2013

ADJOINING 7.5 QUADRANGLES