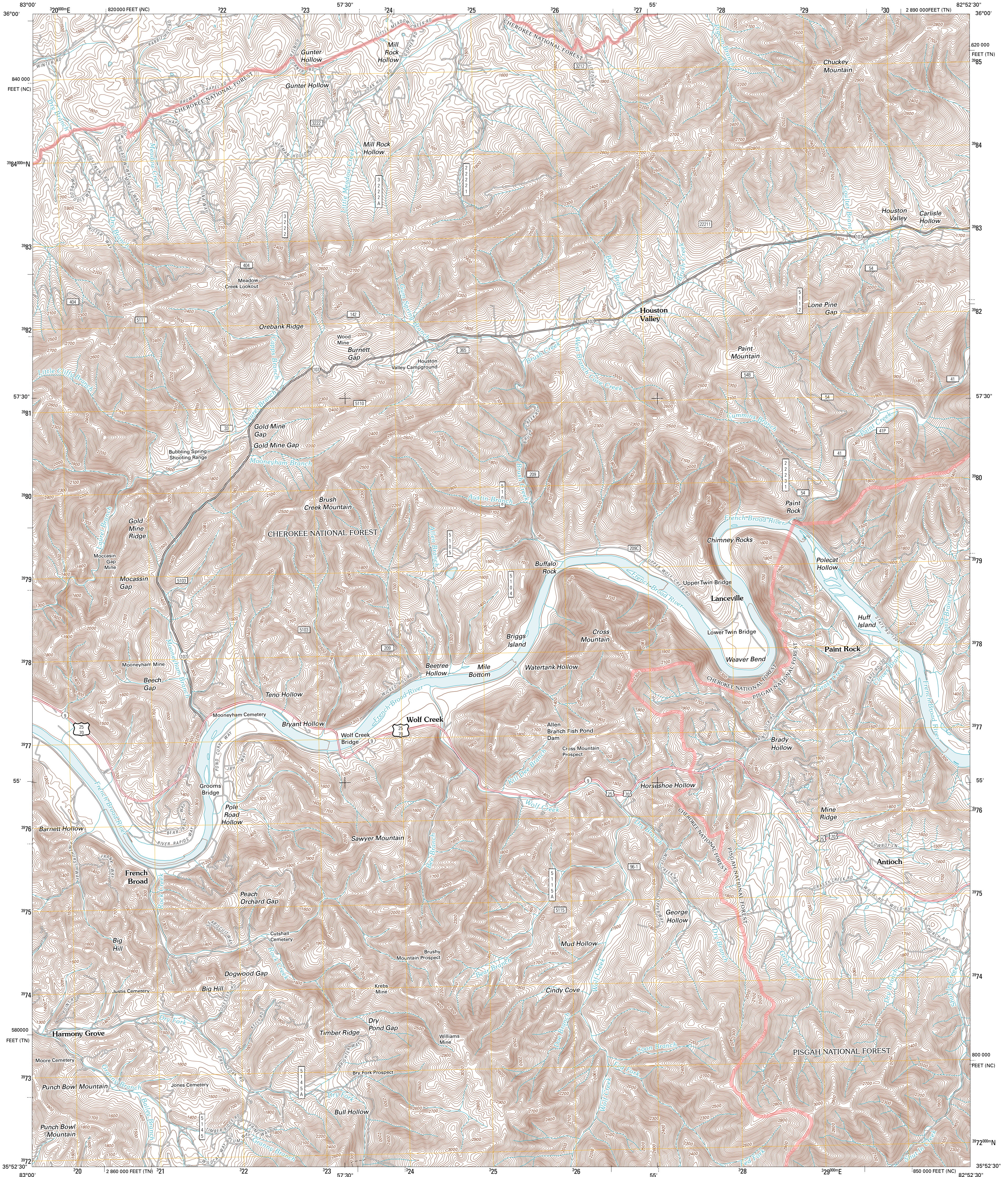




U.S. DEPARTMENT OF THE INTERIOR  
U. S. GEOLOGICAL SURVEY



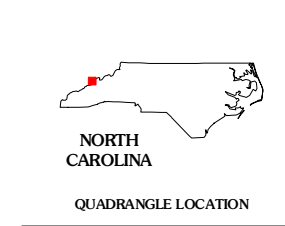
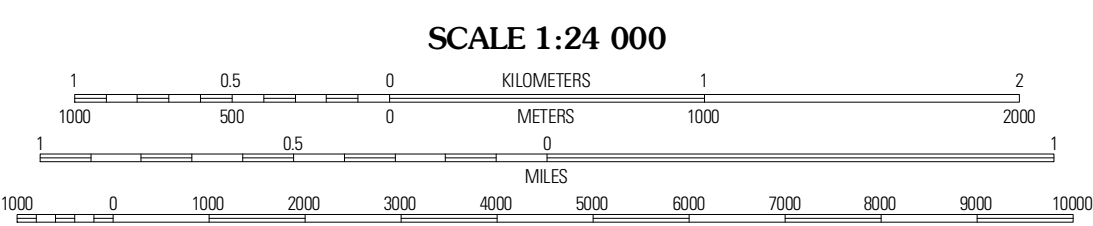
PAINT ROCK QUADRANGLE  
NORTH CAROLINA-TENNESSEE  
7.5-MINUTE SERIES



Produced by the United States Geological Survey  
North American Datum of 1983 (NAD83)  
World Geodetic System of 1984 (WGS84). Projection and  
1 000-meter grid: Universal Transverse Mercator, Zone 17S  
10 000-foot ticks: Tennessee Coordinate System of 1983,  
North Carolina Coordinate System of 1983

UTM GRID AND 2011 MAGNETIC NORTH DECLINATION AT CENTER OF SHEET

U.S. National Grid
100,000m Square ID
LV
Grid Zone Designation
17S



ROAD CLASSIFICATION

Interstate Route	State Route
US Route	Local Road
Ramp	4WD
FS Primary Route	US Route
	FS Passenger Route
	FS High Clearance Route

Check with local Forest Service unit for current travel conditions and restrictions.

QUADRANGLE LOCATION

Parrottsville	Cedar Creek	Day's Creek/Lake
Neddy Mountain	Paint Rock	Hot Springs
Waverille	Lemon Gap	Spring Creek

Imagery.....NAP, April 2010  
Roads.....©2006-2010 Tele Atlas  
Roads within US Forest Service Lands.....FS Topo Data with limited Forest Service updates, 2009  
Names.....GNS, 2010  
Hydrography.....National Hydrography Dataset, 2010  
Contours.....National Elevation Dataset, 2001

CONTOUR INTERVAL 40 FEET  
NORTH AMERICAN VERTICAL DATUM OF 1988  
This map was produced to conform with version 0.5.10 of the draft USGS Standards for 7.5-Minute Quadrangle Maps. A metadata file associated with this product is draft version 0.5.12

PAINT ROCK, NC-TN  
2011

ADJOINING 7.5 QUADRANGLES