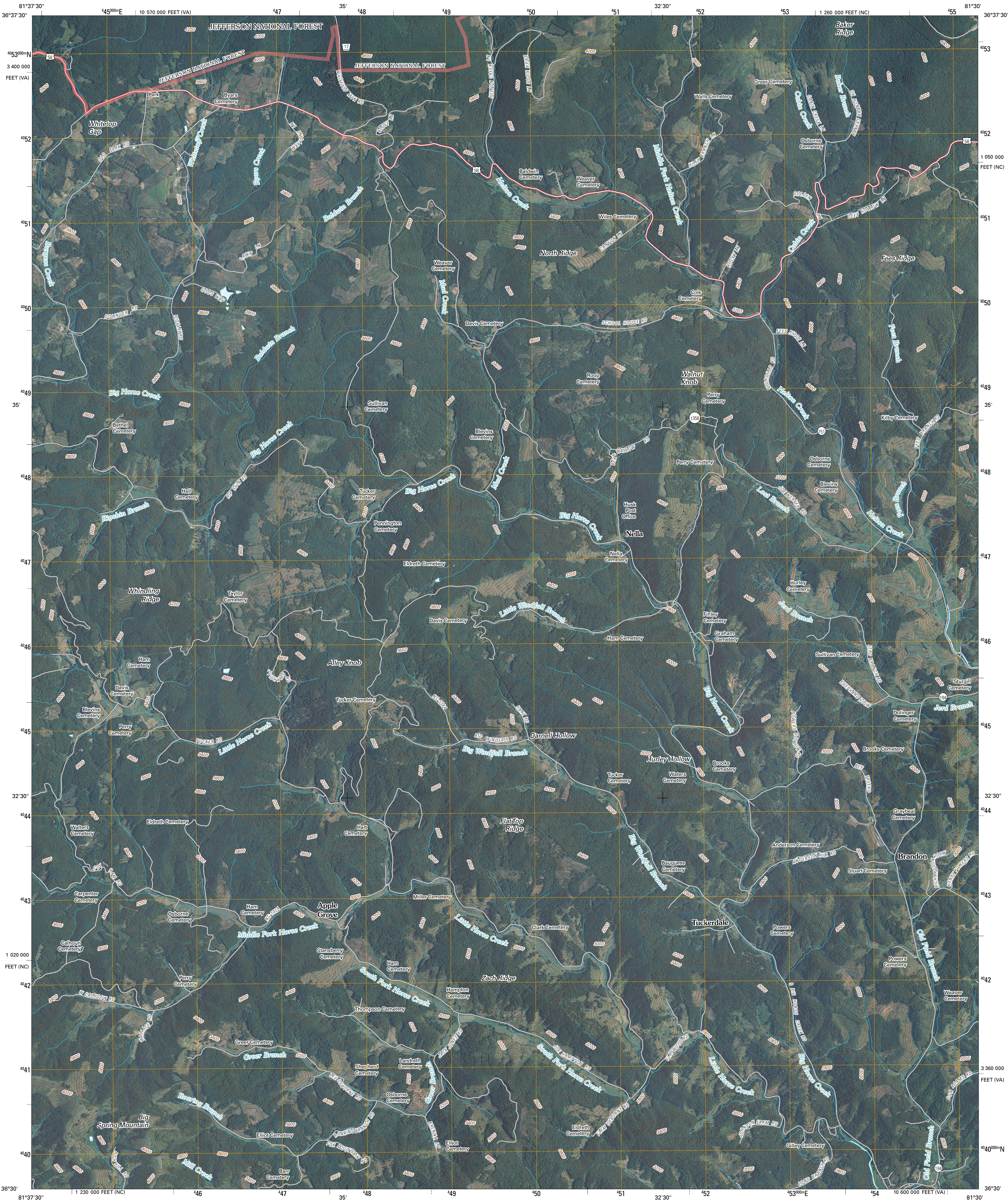




U.S. DEPARTMENT OF THE INTERIOR
U. S. GEOLOGICAL SURVEY



PARK QUADRANGLE
NORTH CAROLINA-VIRGINIA
7.5-MINUTE SERIES



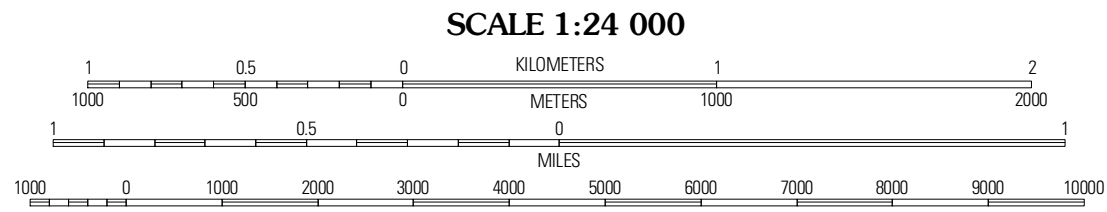
Produced by the United States Geological Survey
North American Datum of 1983 (NAD83)
World Geodetic System of 1984 (WGS84). Projection and
1 000-meter grid; Universal Transverse Mercator, Zone 17S
10 000-foot ticks; North Carolina Coordinate System of 1983
and Virginia Coordinate System of 1983
(south zone)

Imagery.....NAIP, October 2009
Roads.....2006-2010 Tele Atlas
Roads within US Forest Service Lands.....FS Topo Data
with limited Forest Service updates, 2009
Names.....GNIS, 2009
Hydrography.....National Hydrography Dataset, 2009
Contours.....National Elevation Dataset, 2001

UTM GRID AND 2011 MAGNETIC NORTH
DECLINATION AT CENTER OF SHEET

7° 9' 127 MILES
0° 20' 5 MILES

U.S. National Grid
100,000m Square ID
MA
Grid Zone Designation
17S



CONTOUR INTERVAL 40 FEET
NORTH AMERICAN VERTICAL DATUM OF 1988

This map was produced to conform with version 0.5.10 of the
draft USGS Standards for 7.5-Minute Quadrangle Maps.
A metadata file associated with this product is draft version 0.5.13



QUADRANGLE LOCATION		
Konnarock	Whitstop Mountain	Trout Dale
Grayson	Park	Gray's Creek
Baldwin Gap	Warrenville	Jefferson

ROAD CLASSIFICATION

Interstate Route
US Route
Ramp

State Route
Local Road
4WD

Interstate Route
US Route
FS Primary Route
FS Passenger Route
FS High Clearance Route

Check with local Forest Service unit
for current travel conditions and restrictions.

PARK, NC-VA
2011