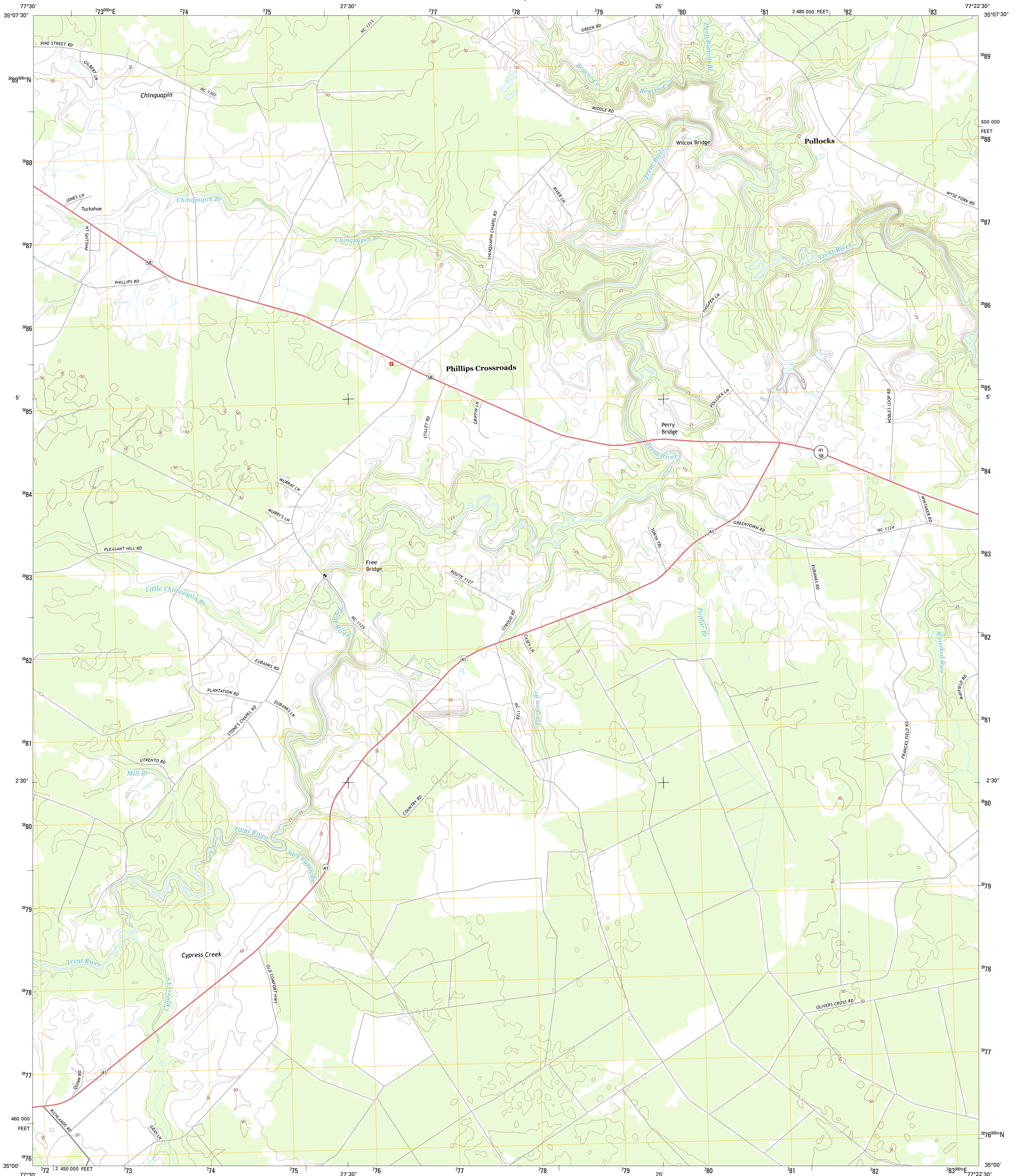




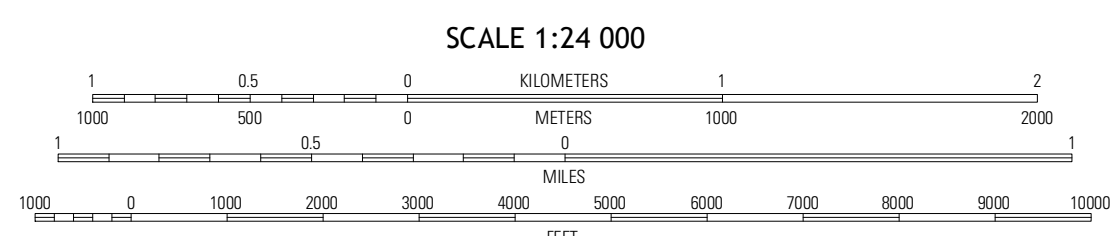
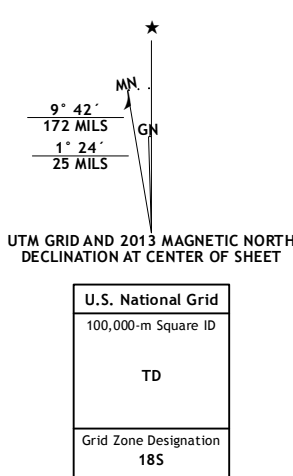
U.S. DEPARTMENT OF THE INTERIOR  
U. S. GEOLOGICAL SURVEY



PHILLIPS CROSSROADS QUADRANGLE  
NORTH CAROLINA-JONES CO.  
7.5-MINUTE SERIES

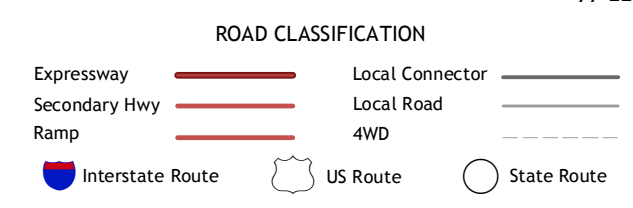


Produced by the United States Geological Survey  
North American Datum of 1983 (NAD83)  
World Geodetic System of 1984 (WGS84) Projection and  
1 000-meter grid: Universal Transverse Mercator, Zone 18S  
10 000-foot ticks: North Carolina Coordinate System of 1983



QUADRANGLE LOCATION

Riverton	Dover	Cove City
Comfort	Phillips Crossroads	Trenton
Richlands	Jacksonville NW	Jacksonville NE



SCALE 1:24 000  
CONTOUR INTERVAL 5 FEET  
NORTH AMERICAN VERTICAL DATUM OF 1988  
This map was produced to conform with the National Geospatial Program US Topo Product Standard, 2011. A metadata file associated with this product is draft version 0.6.11

PHILLIPS CROSSROADS, NC  
2013

ADJOINING 7.5 QUADRANGLES