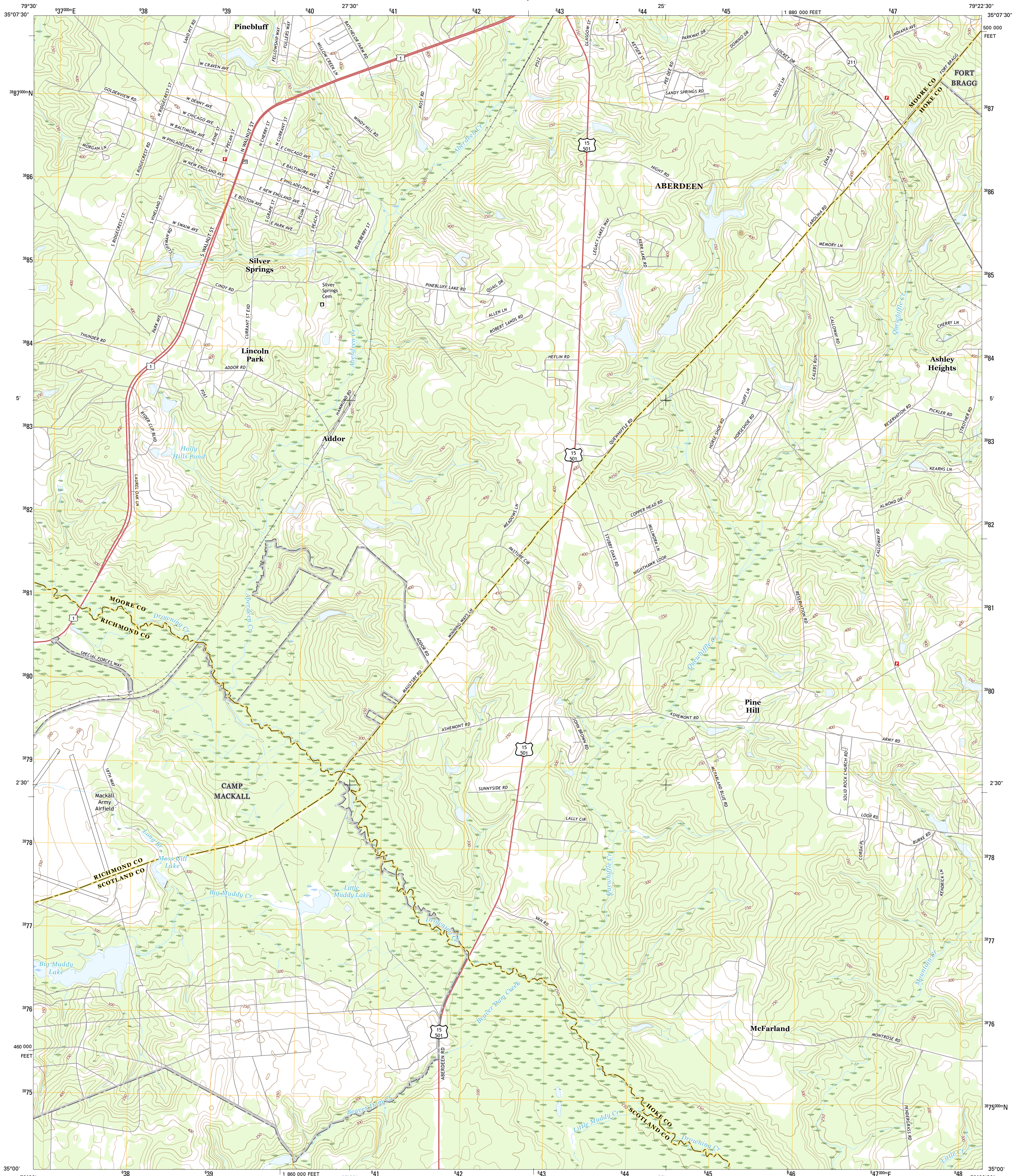




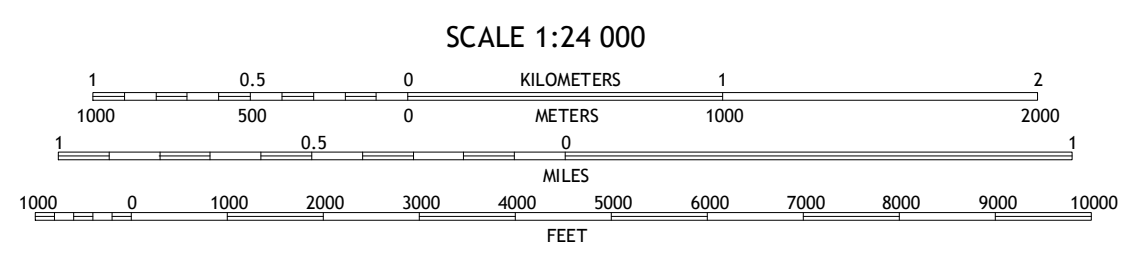
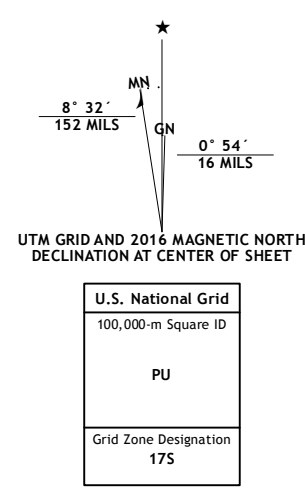
U.S. DEPARTMENT OF THE INTERIOR  
U.S. GEOLOGICAL SURVEY



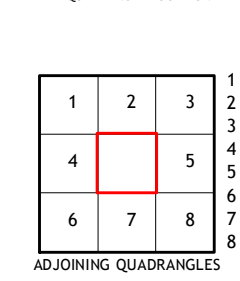
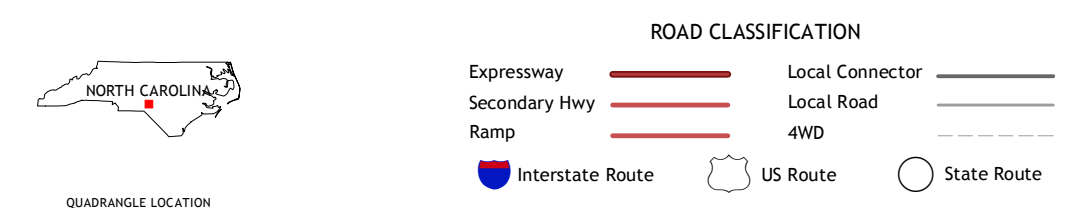
PINEBLUFF QUADRANGLE  
NORTH CAROLINA  
7.5-MINUTE SERIES



**Produced by the United States Geological Survey**  
 North American Datum of 1983 (NAD83)  
 World Geodetic System of 1984 (WGS84) Projection and  
 1 000-meter grid: Universal Transverse Mercator, Zone 17S  
 10 000-foot ticks: North Carolina Coordinate System of 1983  
 This map is not a legal document. Boundaries may be  
 generalized for this map scale. Private lands within government  
 reservations may not be shown. Obtain permission before  
 entering private lands.  
 Imagery.....NAIP, May 2014  
 Roads.....U.S. Census Bureau, 2015 - 2016  
 Names.....GNIS, 2016  
 Hydrography.....National Hydrography Dataset, 2014  
 Contours.....National Elevation Dataset, 2008  
 Boundaries.....Multiple sources; see metadata file 1972 - 2016  
 Wetlands.....FWS National Wetlands Inventory 1977 - 2014



CONTOUR INTERVAL 10 FEET  
 NORTH AMERICAN VERTICAL DATUM OF 1988  
 This map was produced to conform with the  
 National Geospatial Program US Topo Product Standard, 2011.  
 A metadata file associated with this product is draft version 0.6.19



1	2	3
4	5	6
7	8	

ADJOINING QUADRANGLES

1 West End  
 2 Southern Pines  
 3 Niagara  
 4 Hoffman  
 5 McCain  
 6 Marston  
 7 Silver Hill  
 8 Wagman

PINEBLUFF, NC  
2016



NSN 7540-01-6376-109  
 NGA REF NO. USGS X 24 K 353 14