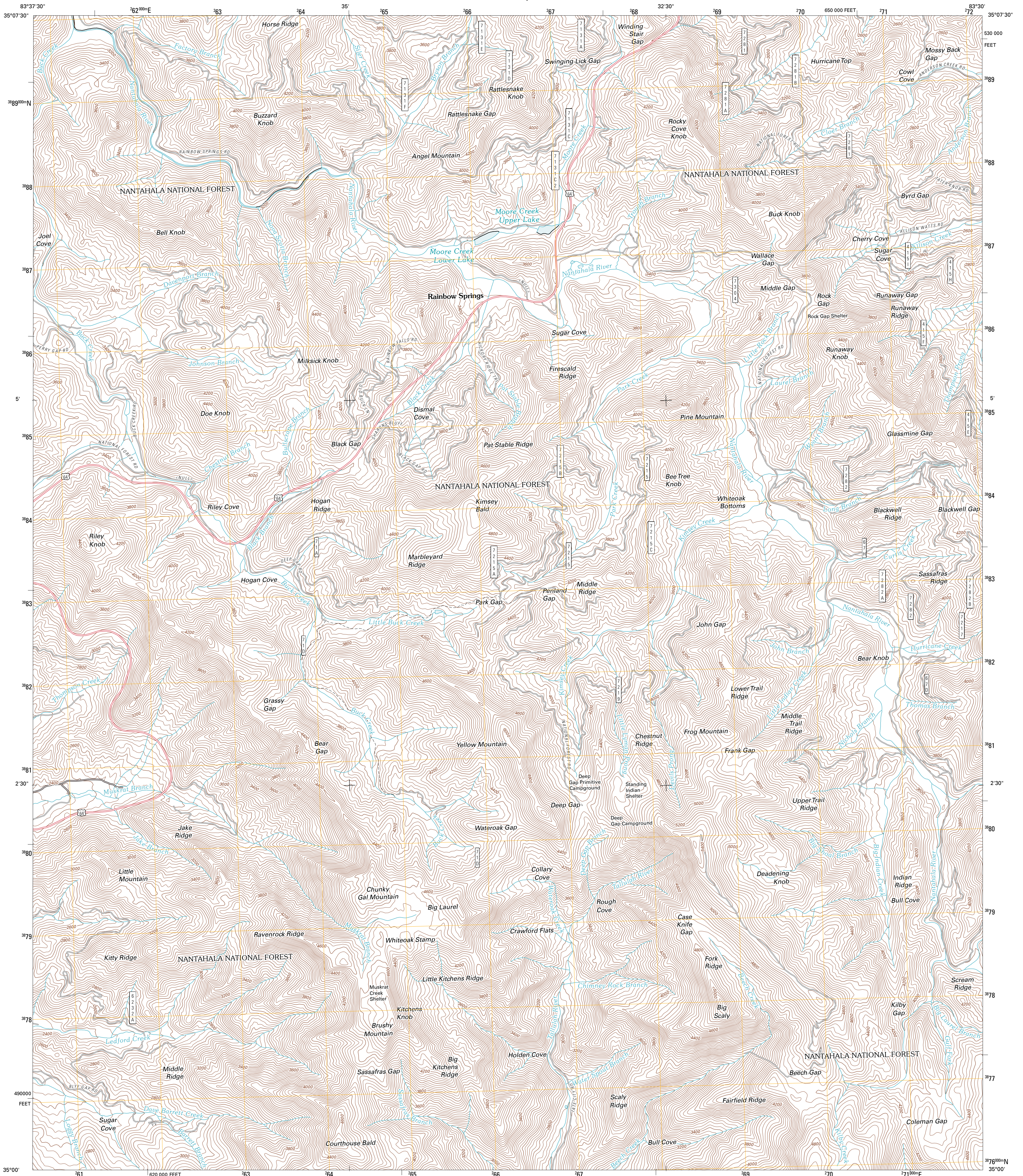




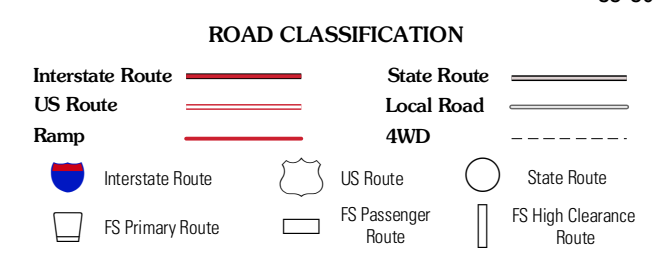
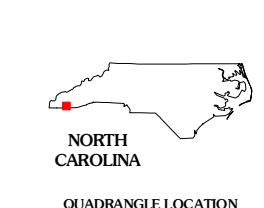
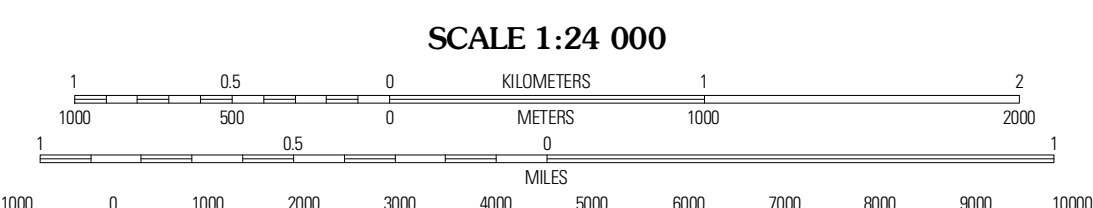
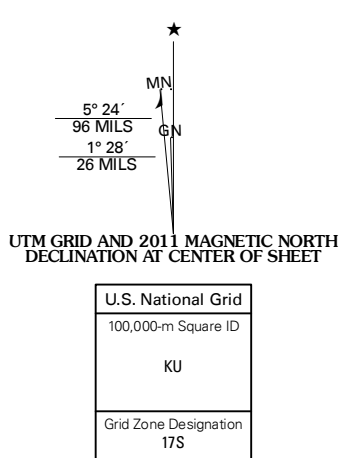
U.S. DEPARTMENT OF THE INTERIOR
U. S. GEOLOGICAL SURVEY



RAINBOW SPRINGS QUADRANGLE
NORTH CAROLINA
7.5-MINUTE SERIES



Produced by the United States Geological Survey
North American Datum of 1983 (NAD83)
World Geospatial System of 1984 (WGS84). Projection and
1 000-meter grid. Universal Transverse Mercator, Zone 17S
10 000-foot ticks: North Carolina Coordinate System of 1983



Topton	Wayah Bald	Franklin
Shooting Creek	Rainbow Springs	Prentiss
Macedonia	Hightower Bald	Dillard

Check with local Forest Service unit for current travel conditions and restrictions.

RAINBOW SPRINGS, NC
2011

CONTOUR INTERVAL 40 FEET
NORTH AMERICAN VERTICAL DATUM OF 1988
This map was produced to conform with version 0.5.10 of the draft USGS Standards for 7.5-Minute Quadrangle Maps. A metadata file associated with this product is draft version 0.5.12

Imagery: NAIIP, October 2009
Roads: ©2006-2010 Tele Atlas
Roads within US Forest Service Lands: FSTopo Data with limited Forest Service updates, 2009
Names: CNS, 2010
Hydrography: National Hydrography Dataset, 2009
Contours: National Elevation Dataset, 2008

ADJOINING 7.5 QUADRANGLES