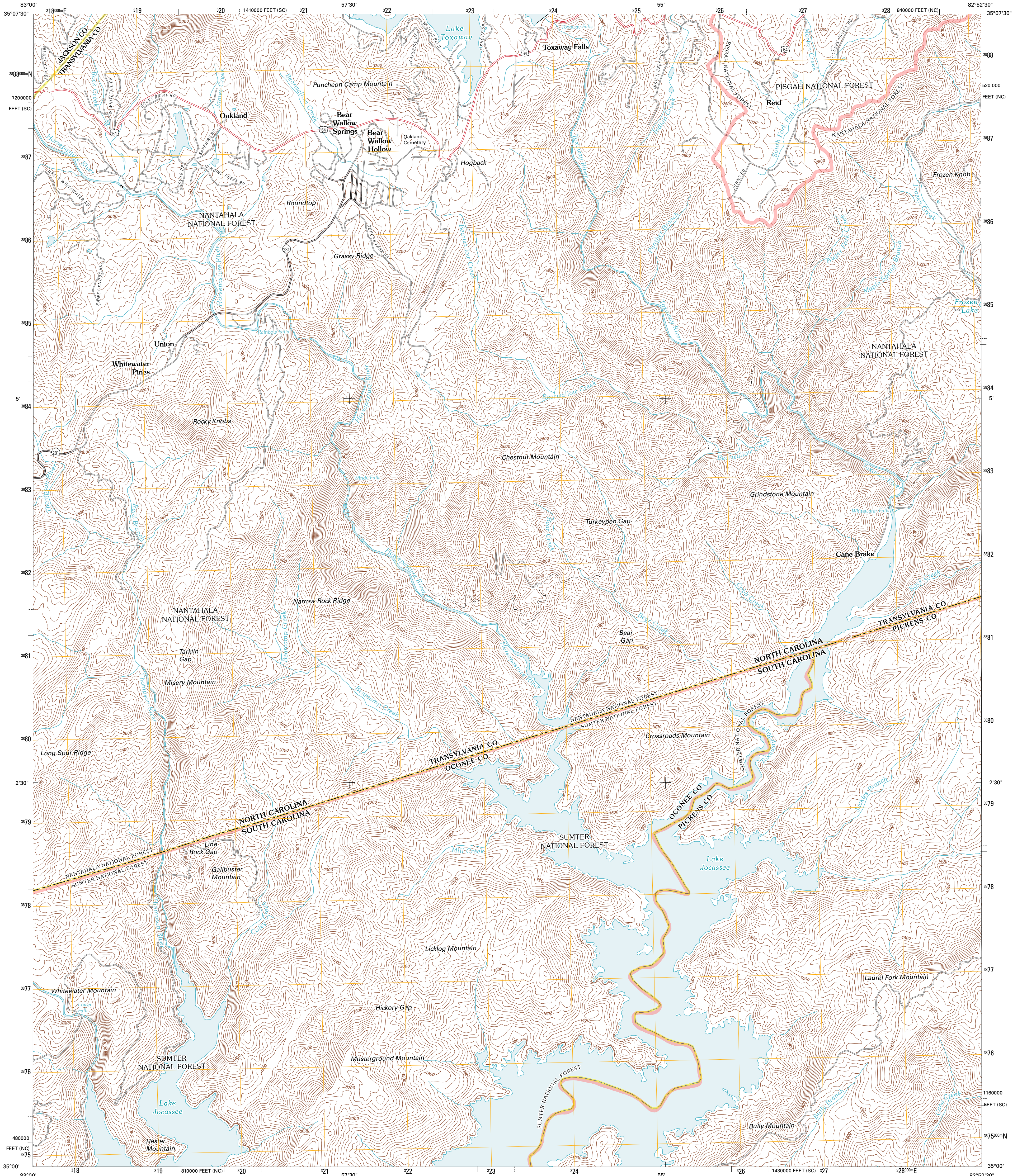




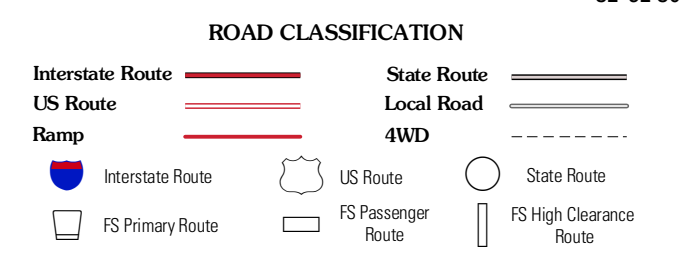
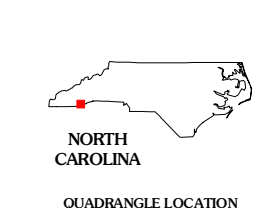
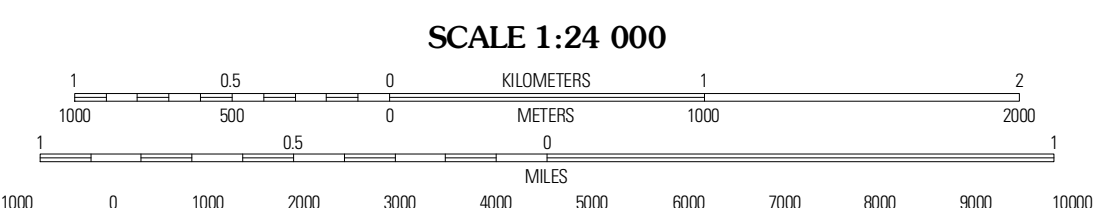
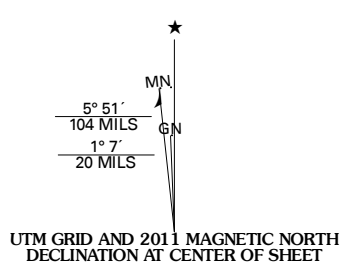
U.S. DEPARTMENT OF THE INTERIOR  
U. S. GEOLOGICAL SURVEY



REID QUADRANGLE  
NORTH CAROLINA-SOUTH CAROLINA  
7.5-MINUTE SERIES



Produced by the United States Geological Survey  
North American Datum of 1983 (NAD83)  
World Geodetic System of 1984 (WGS84). Projection and  
1 000-foot grid: Universal Transverse Mercator, Zone 17S  
10 000-foot ticks: North Carolina Coordinate System of  
1983, South Carolina Coordinate System of 1983



Imagery:.....NAP, October 2009  
Roads:.....©2006-2010 Tele Atlas  
Roads within US Forest Service Lands:.....FSTopo Data  
with limited Forest Service updates, 2009  
Names:.....National Hydrography Dataset, 2010  
Hydrography:.....National Hydrography Dataset, 2009  
Contours:.....National Elevation Dataset, 2008  
Boundaries:.....Census, IBWC, IBC, USGS, 1972 - 2010

U.S. National Grid
100,000-m Square ID
LU
Grid Zone Designation
17S

CONTOUR INTERVAL 40 FEET  
NORTH AMERICAN VERTICAL DATUM OF 1988  
This map was produced to conform with version 0.5.10  
of the USGS US Topo Product Standard.  
A metadata file associated with this product is draft version 0.5.16

QUADRANGLE LOCATION

Big Ridge	Lake Toxaway	Rosson
Cashiers	Reid	Eastatoe Gap
Tamassee	Salem	Sunset

Check with local Forest Service unit  
for current travel conditions and restrictions.

REID, NC-SC  
2011

ADJOINING 7.5 QUADRANGLES