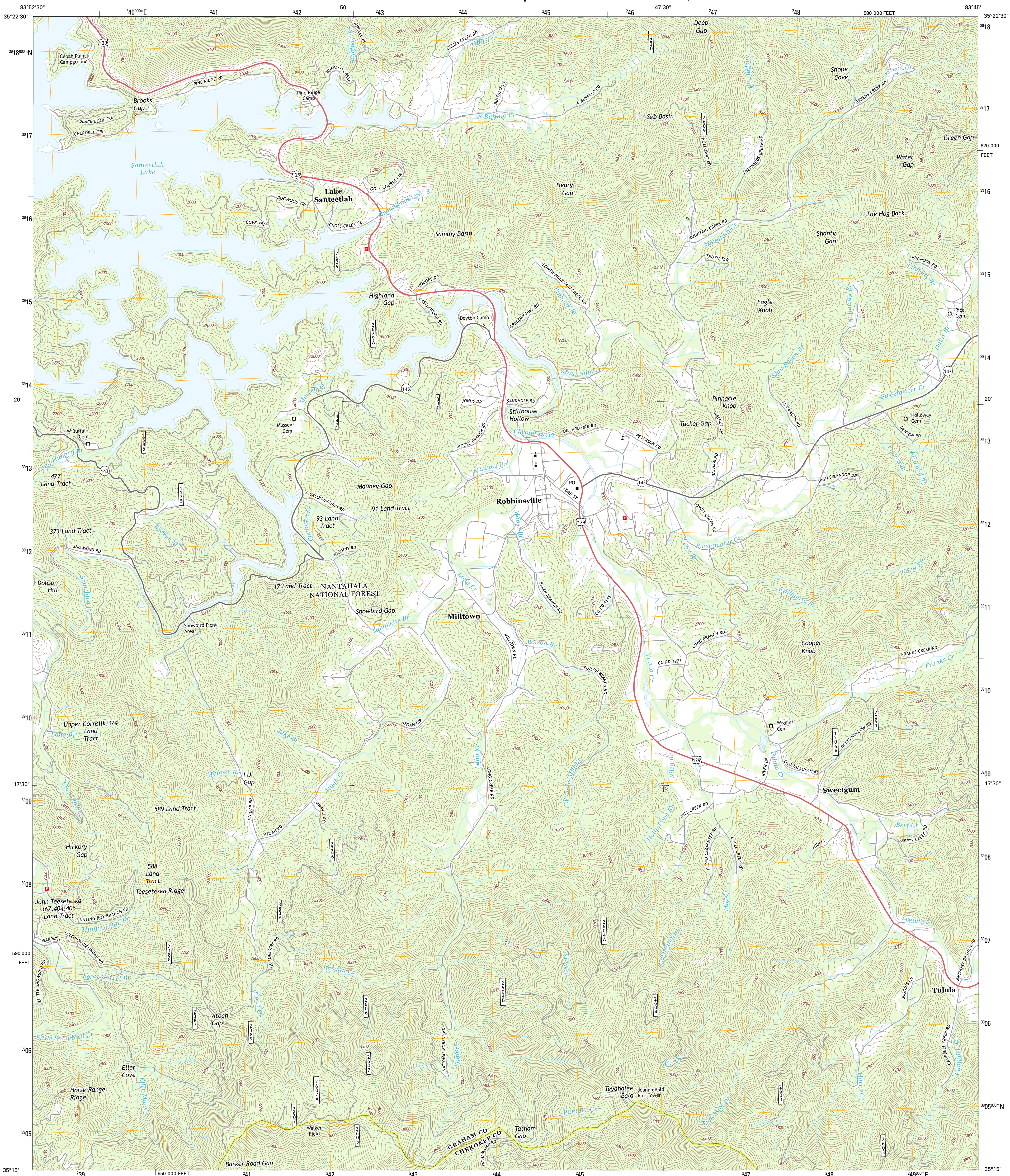




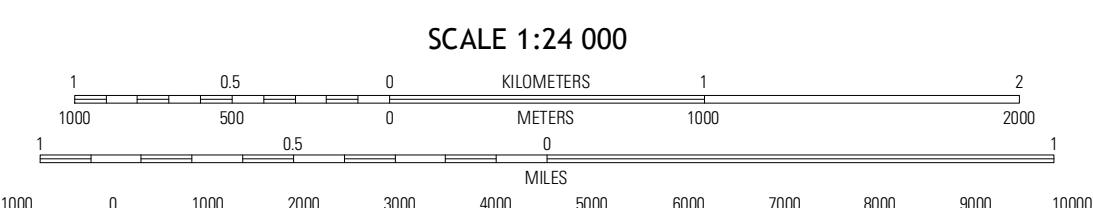
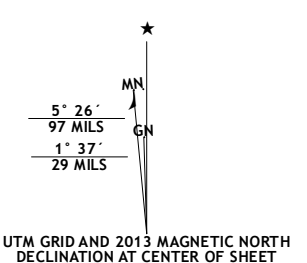
U.S. DEPARTMENT OF THE INTERIOR  
U. S. GEOLOGICAL SURVEY



ROBBINSVILLE QUADRANGLE  
NORTH CAROLINA  
7.5-MINUTE SERIES



Produced by the United States Geological Survey  
North American Datum of 1983 (NAD83)  
World Geodetic System of 1984 (WGS84). Projection and  
1000-meter grid: Universal Transverse Mercator, Zone 17S  
10 000-foot ticks: North Carolina Coordinate System of 1983



QUADRANGLE LOCATION

Tapoco	Fontana	Tuskegee
Santeetlah Creek	Robbinsville	Hewitt
Marble	Andrews	Topkon

ADJOINING 7.5 QUADRANGLES

ROAD CLASSIFICATION

- Expressway
- Secondary Hwy
- Ramp
- Interstate Route
- FS Primary Route
- Local Connector
- Local Road
- 4WD
- US Route
- FS Passenger Route
- FS High Clearance Route
- State Route

Check with local Forest Service unit for current travel conditions and restrictions.

ROBBINSVILLE, NC  
2013

Imagery.....NAIP, June 2012  
Roads.....©2006-2012, TomTom  
Roads within US Forest Service Lands with limited Forest Service updates, 2012  
Names.....©2012, GNIS, 2013  
Hydrography.....National Hydrography Dataset, 2012  
Contours.....National Elevation Dataset, 2008  
Boundaries.....Census, IBWC, IBC, USGS, 1972 - 2012

CONTOUR INTERVAL 40 FEET  
NORTH AMERICAN VERTICAL DATUM OF 1988

This map was produced to conform with the National Geospatial Program US Topo Product Standard, 2011. A metadata file associated with this product is draft version 0.6.11