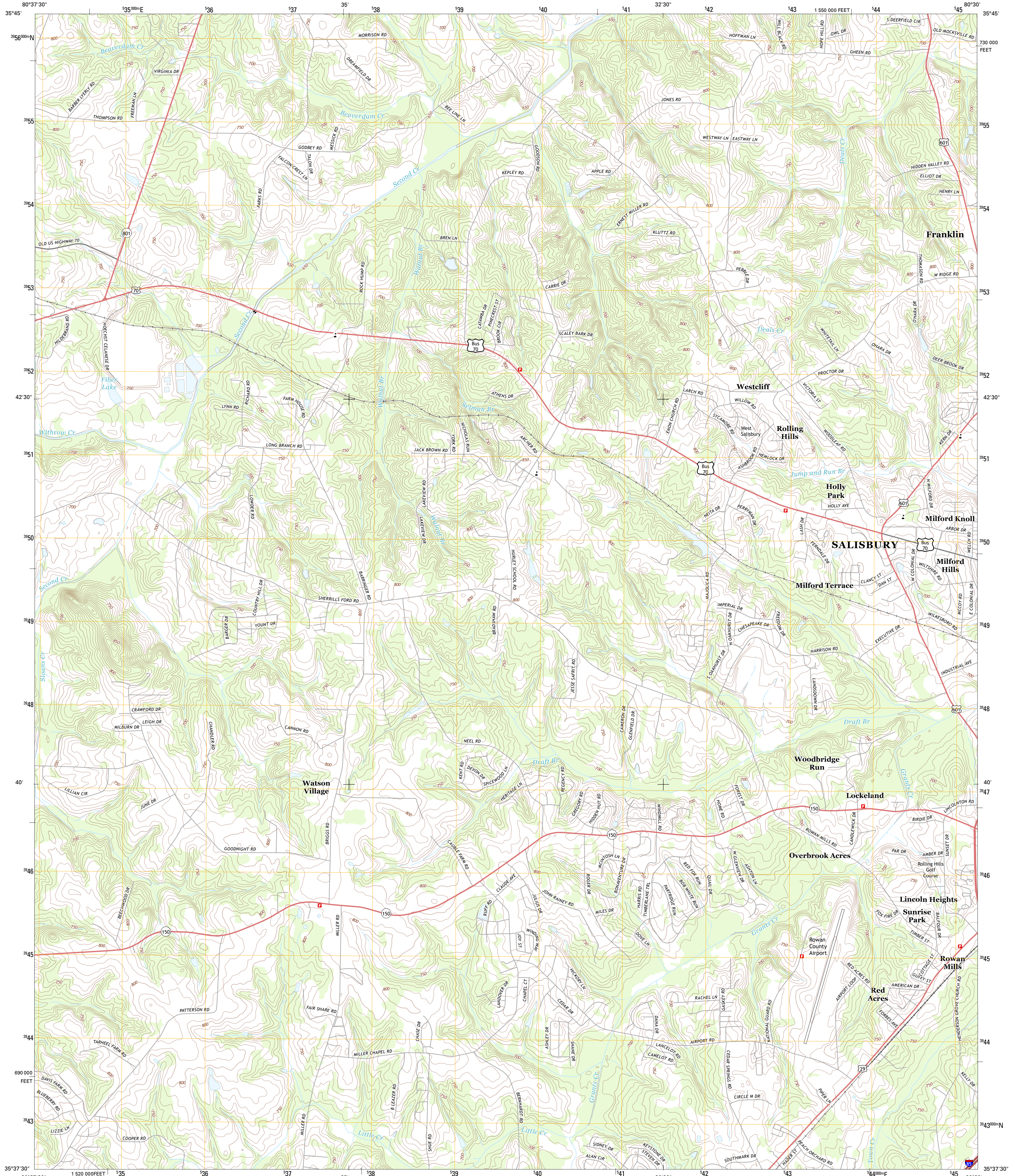




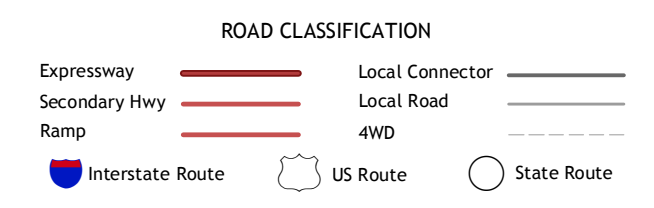
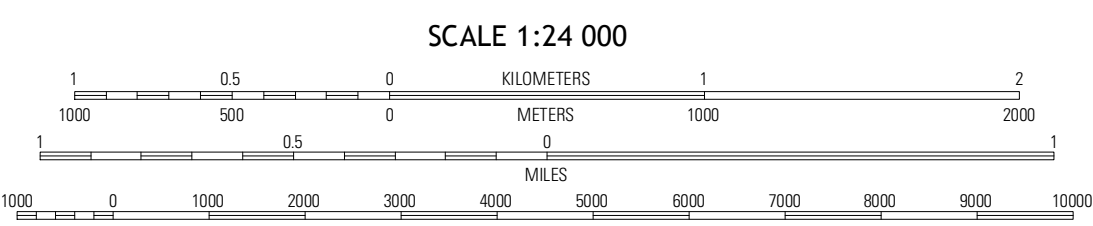
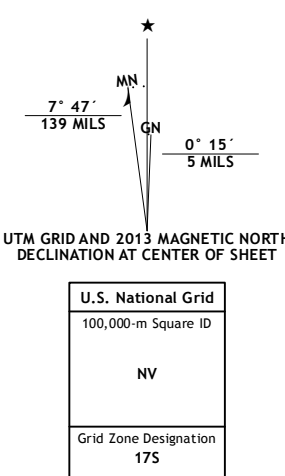
U.S. DEPARTMENT OF THE INTERIOR  
U. S. GEOLOGICAL SURVEY



ROWAN MILLS QUADRANGLE  
NORTH CAROLINA-ROWAN CO.  
7.5-MINUTE SERIES



Produced by the United States Geological Survey  
North American Datum of 1983 (NAD83)  
World Geodetic System of 1984 (WGS84), Projection and  
1 000-meter grid: Universal Transverse Mercator, Zone 17S  
10 000-foot ticks: North Carolina Coordinate System of 1983



QUADRANGLE LOCATION

|              |             |            |
|--------------|-------------|------------|
| Cool Springs | Coolseemee  | Churchland |
| Cleveland    | Rowan Mills | Salisbury  |
| Enochville   | China Grove | Rockwell   |

Imagery.....NAIP, June 2012 - August 2012  
Roads.....©2006-2012 TomTom  
Names.....GNS, 2013  
Hydrography.....National Hydrography Dataset, 2012  
Contours.....National Elevation Dataset, 2008  
Boundaries.....Census, IBWC, IBC, USGS, 1972 - 2012

CONTOUR INTERVAL 10 FEET  
NORTH AMERICAN VERTICAL DATUM OF 1988  
This map was produced to conform with the  
National Geospatial Program US Topo Product Standard, 2011.  
A metadata file associated with this product is draft version 0.6.11

ROWAN MILLS, NC  
2013

ADJOINING 7.5 QUADRANGLES