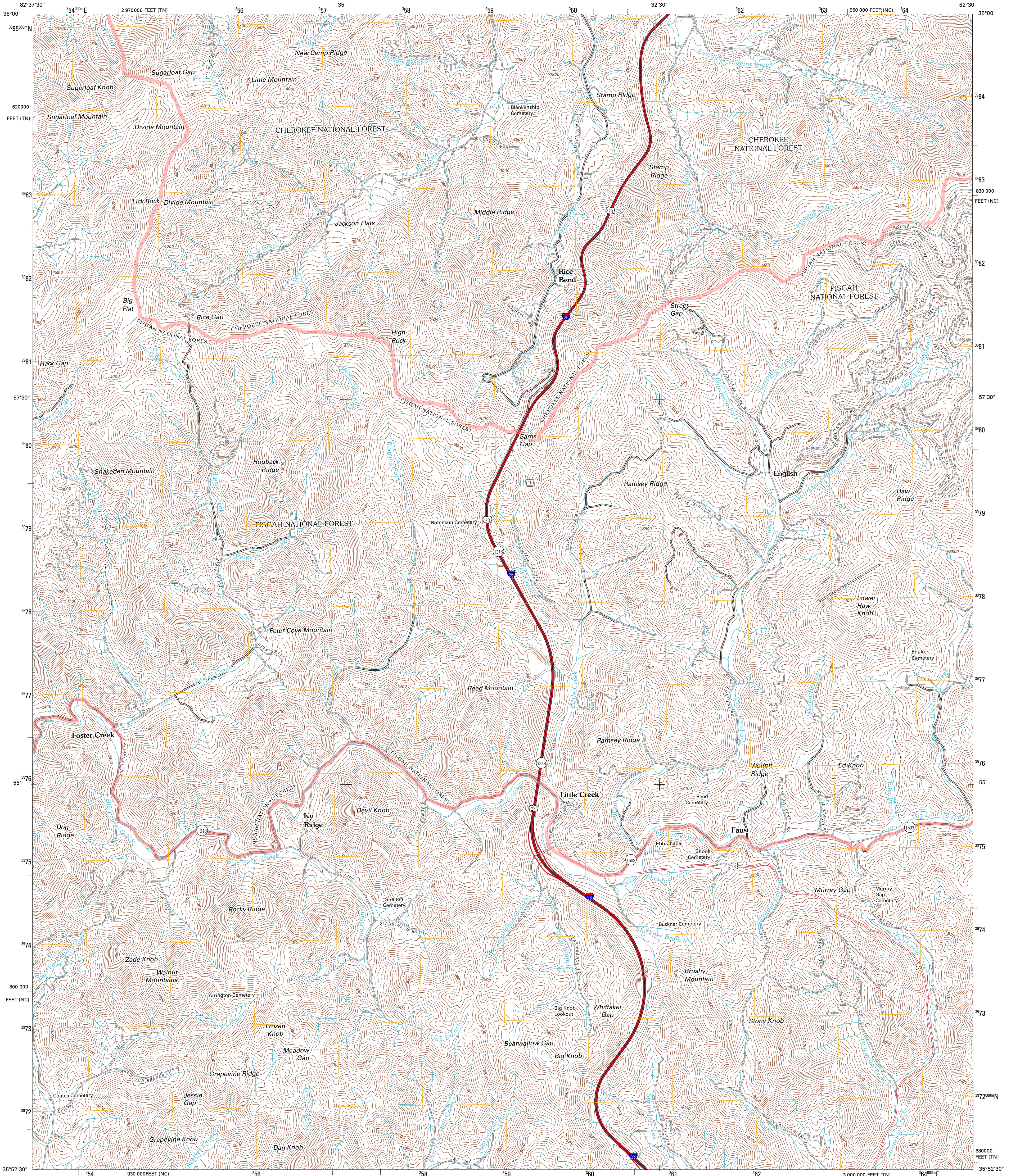




U.S. DEPARTMENT OF THE INTERIOR
U. S. GEOLOGICAL SURVEY



SAMS GAP QUADRANGLE
NORTH CAROLINA-TENNESSEE
7.5-MINUTE SERIES

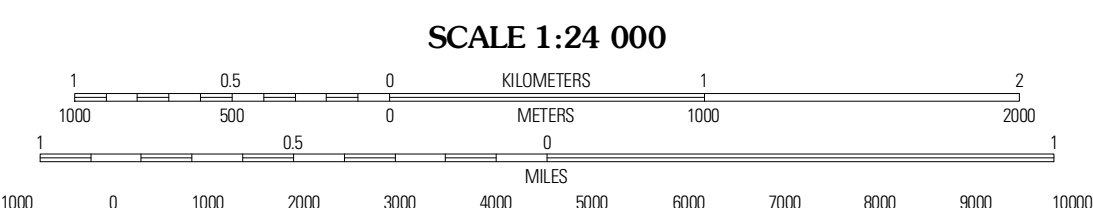


Produced by the United States Geological Survey
North American Datum of 1983 (NAD83)
World Geodetic System of 1984 (WGS84) Projection and
1 000-meter grid: Universal Transverse Mercator, Zone 17S
10 000-foot ticks: North Carolina Coordinate System of
1983, Tennessee Coordinate System of 1983

Imagery.....NAP, October 2009
Roads.....©2006-2010 Tele Atlas
Roads within US Forest Service Lands.....FSTopo Data
with limited Forest Service updates, 2009
Names.....GNS, 2010
Hydrography.....National Hydrography Dataset, 2009
Contours.....National Elevation Dataset, 2008

UTM GRID AND 2011 MAGNETIC NORTH DECLINATION AT CENTER OF SHEET

U.S. National Grid
100,000m Square ID
LV
Grid Zone Designation
17S



CONTOUR INTERVAL 40 FEET
NORTH AMERICAN VERTICAL DATUM OF 1988

This map was produced to conform with version 0.5.10 of the
draft USGS Standards for 7.5-Minute Quadrangle Maps.
A metadata file associated with this product is draft version 0.5.12

ROAD CLASSIFICATION

Interstate Route	State Route
US Route	Local Road
Ramp	4WD
FS Primary Route	FS Passenger Route
FS High Clearance Route	

QUADRANGLE LOCATION

Greystone	Flag Pond	Chestos
White Rock	Sams Gap	Bald Creek
Marshall	Mans Hill	Barnesville

ADJOINING 7.5 QUADRANGLES

Check with local Forest Service unit
for current travel conditions and restrictions.

SAMS GAP, NC-TN
2011