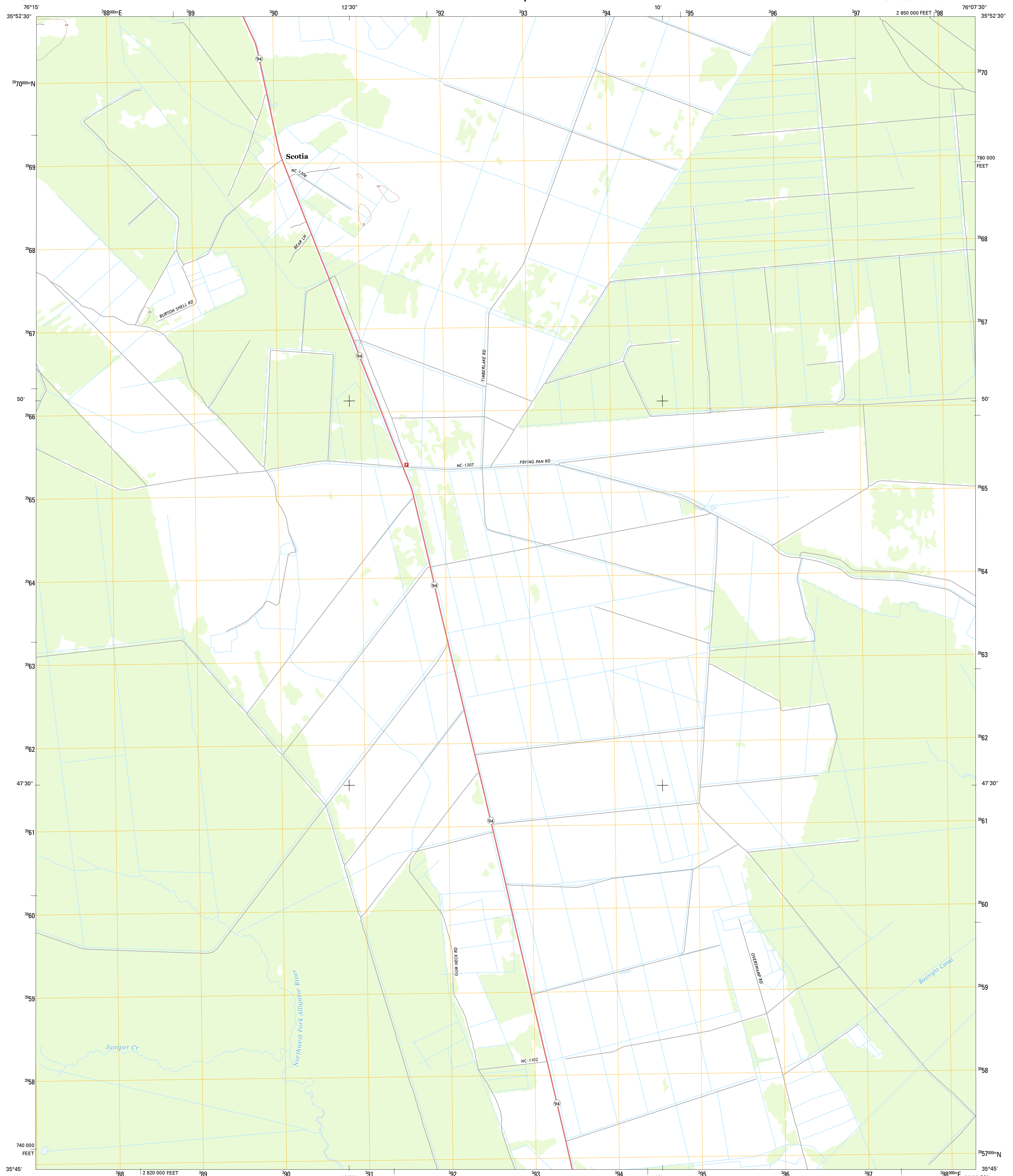




U.S. DEPARTMENT OF THE INTERIOR
U. S. GEOLOGICAL SURVEY



SCOTIA QUADRANGLE
NORTH CAROLINA-TYRRELL CO.
7.5-MINUTE SERIES

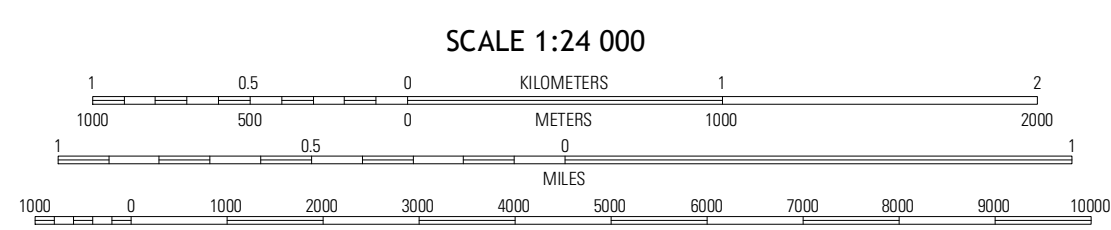


Produced by the United States Geological Survey
North American Datum of 1983 (NAD83)
World Geodetic System of 1984 (WGS84). Projection and
1 000-foot grid: Universal Transverse Mercator, Zone 18S
10 000-foot ticks: North Carolina Coordinate System of 1983

UTM GRID AND 2013 MAGNETIC NORTH DECLINATION AT CENTER OF SHEET

10° 37' 18.9 MILLS
0° 42' 12 MILLS

U.S. National Grid
100,000-m Square ID
UE
Grid Zone Designation 18S



CONTOUR INTERVAL 5 FEET
NORTH AMERICAN VERTICAL DATUM OF 1988

This map was produced to conform with the
National Geospatial Program US Topo Product Standard, 2011.
A metadata file associated with this product is draft version 0.6.11



QUADRANGLE LOCATION

Columbia West	Columbia East	Fort Landing
Creswell SE	Scotia	Frying Pan
New Lake	Fairfield NW	Fairfield NE

ADJOINING 7.5 QUADRANGLES

ROAD CLASSIFICATION

Expressway	Local Connector
Secondary Hwy	Local Road
Interstate Route	4WD
US Route	State Route

SCOTIA, NC
2013