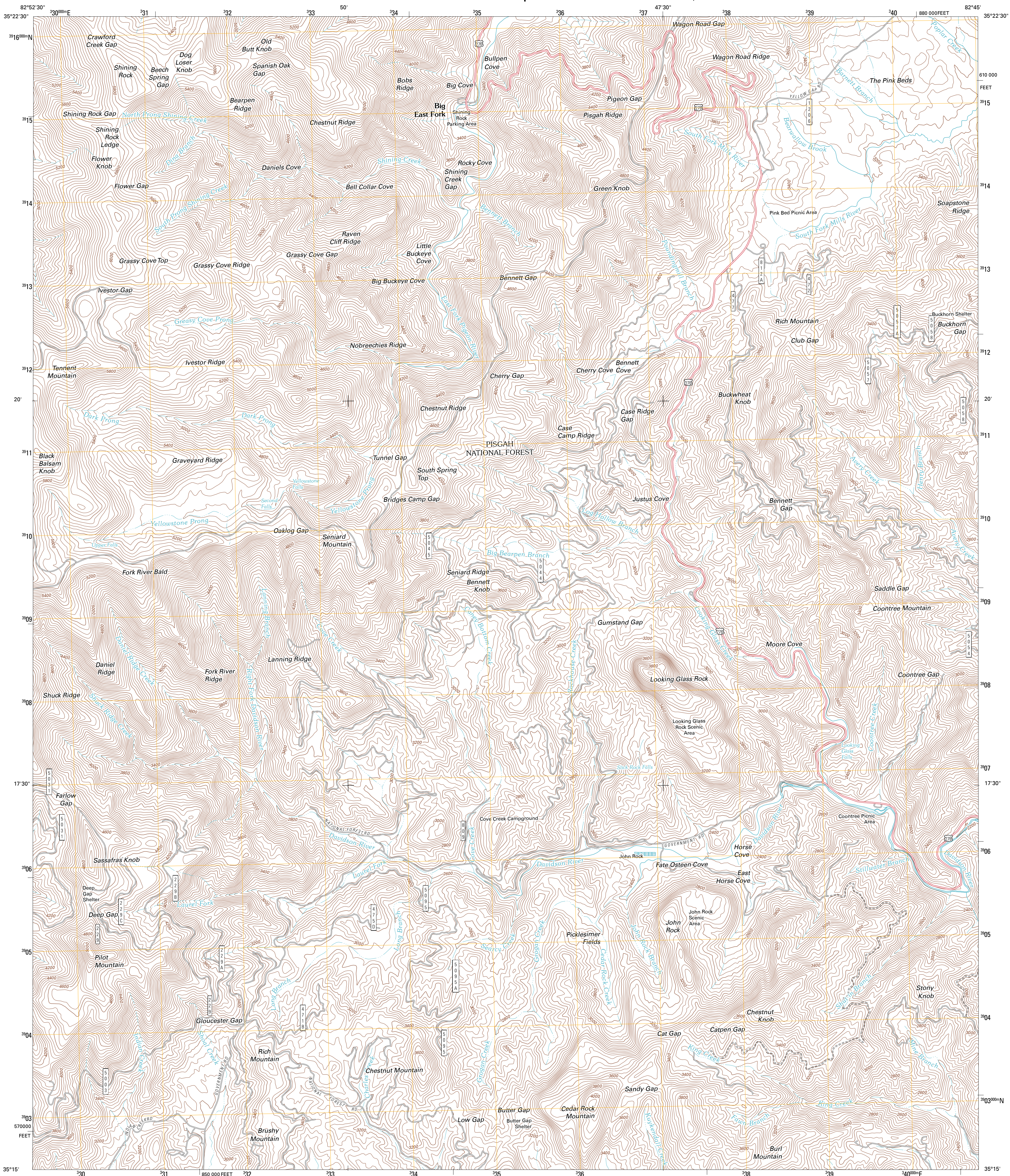




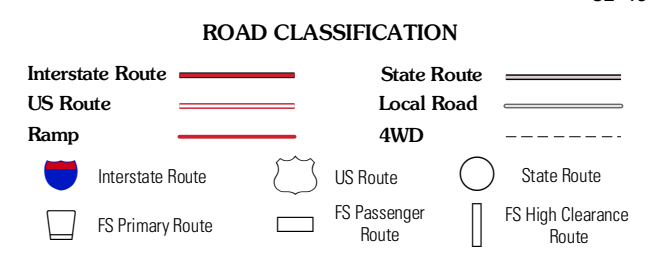
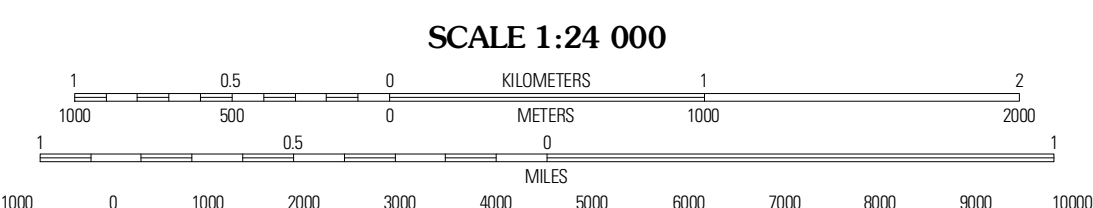
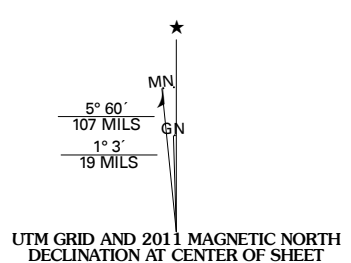
U.S. DEPARTMENT OF THE INTERIOR
U. S. GEOLOGICAL SURVEY



SHINING ROCK QUADRANGLE
NORTH CAROLINA
7.5-MINUTE SERIES



Produced by the United States Geological Survey
North American Datum of 1983 (NAD83)
World Geodetic System of 1984 (WGS84). Projection and
1 000-meter grid: Universal Transverse Mercator, Zone 17S
10 000-foot ticks: North Carolina Coordinate System of 1983



Imagery:.....NAIP, October 2009
Roads:.....©2006-2010 Tele Atlas
Roads within US Forest Service Lands:.....FSTopo Data
with limited Forest Service updates, 2009
Names:.....National Hydrography Dataset, 2009
Hydrography:.....National Hydrography Dataset, 2009
Contours:.....National Elevation Dataset, 2008

U.S. National Grid
100,000-m Square ID
LV
Grid Zone Designation
17S

CONTOUR INTERVAL 40 FEET
NORTH AMERICAN VERTICAL DATUM OF 1988
This map was produced to conform with version 0.5.10 of the
draft USGS Standards for 7.5-Minute Quadrangle Maps.
A metadata file associated with this product is draft version 0.5.12

Waynesville	Cruso	Dunsmore Mountain
Sum Knob	Shining Rock	Pisgah Forest
Lake Towaway	Rosman	Brevard

Check with local Forest Service unit
for current travel conditions and restrictions.
SHINING ROCK, NC
2011

ADJOINING 7.5 QUADRANGLES