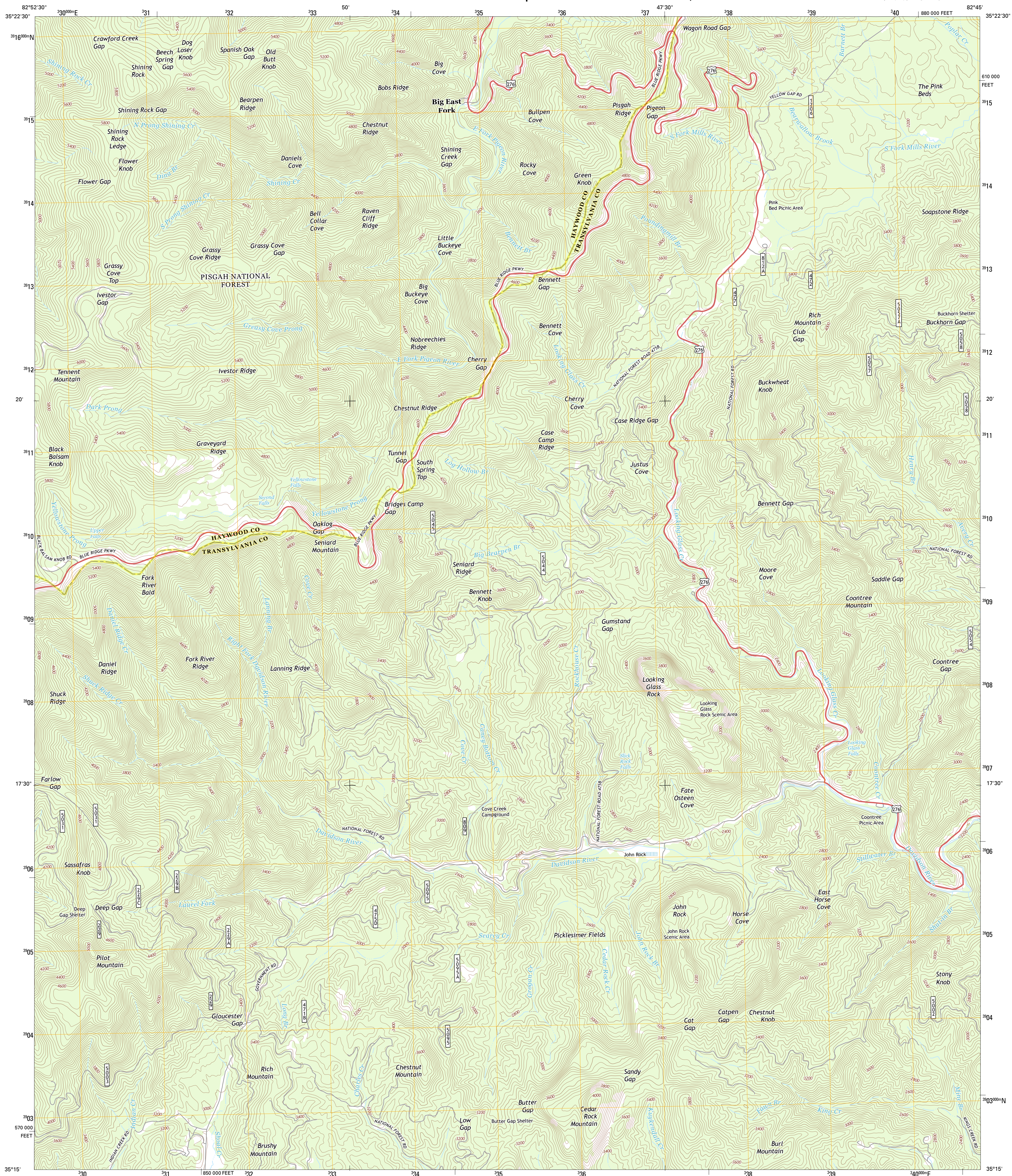




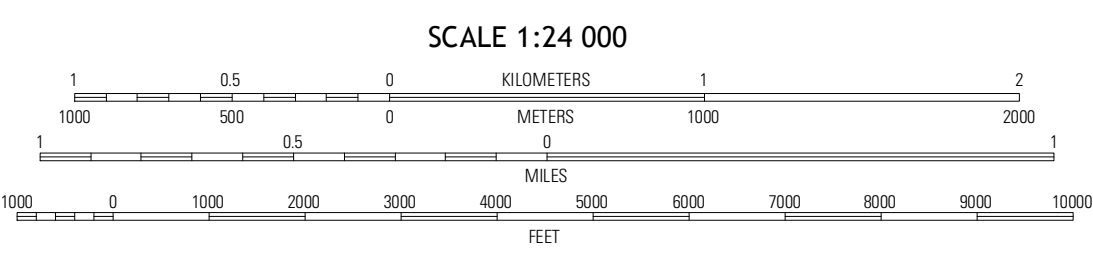
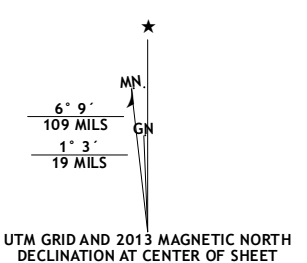
U.S. DEPARTMENT OF THE INTERIOR
U. S. GEOLOGICAL SURVEY



SHINING ROCK QUADRANGLE
NORTH CAROLINA
7.5-MINUTE SERIES



Produced by the United States Geological Survey
North American Datum of 1983 (NAD83)
World Geodetic System of 1984 (WGS84). Projection and
1 000-foot grid: Universal Transverse Mercator, Zone 17S
10 000-foot ticks: North Carolina Coordinate System of 1983



ROAD CLASSIFICATION

- Expressway
- Secondary Hwy
- Ramp
- Interstate Route
- FS Primary Route
- Local Connector
- Local Road
- 4WD
- US Route
- FS Passenger Route
- State Route
- FS High Clearance Route

Check with local Forest Service unit for current travel conditions and restrictions.

QUADRANGLE LOCATION

Waynesville	Cross	DuSmore Mountain
Sam Knob	Shining Rock	Pisgah Forest
Lake Toxaway	Roman	Brevard

ADJOINING 7.5 QUADRANGLES

CONTOUR INTERVAL 40 FEET
NORTH AMERICAN VERTICAL DATUM OF 1988

This map was produced to conform with the National Geospatial Program US Topo Product Standard, 2011. A metadata file associated with this product is draft version 0.6.11

Imagery: N.A.I.P., June 2012
©2006-2012, TomTom
Roads: within US Forest Service Lands, with limited Forest Service updates, 2013
Names: ©GNS, 2013
Hydrography: National Hydrography Dataset, 2012
Contours: National Elevation Dataset, 2008
Boundaries: Census, IBWC, IBC, USGS, 1972 - 2012

SHINING ROCK, NC
2013