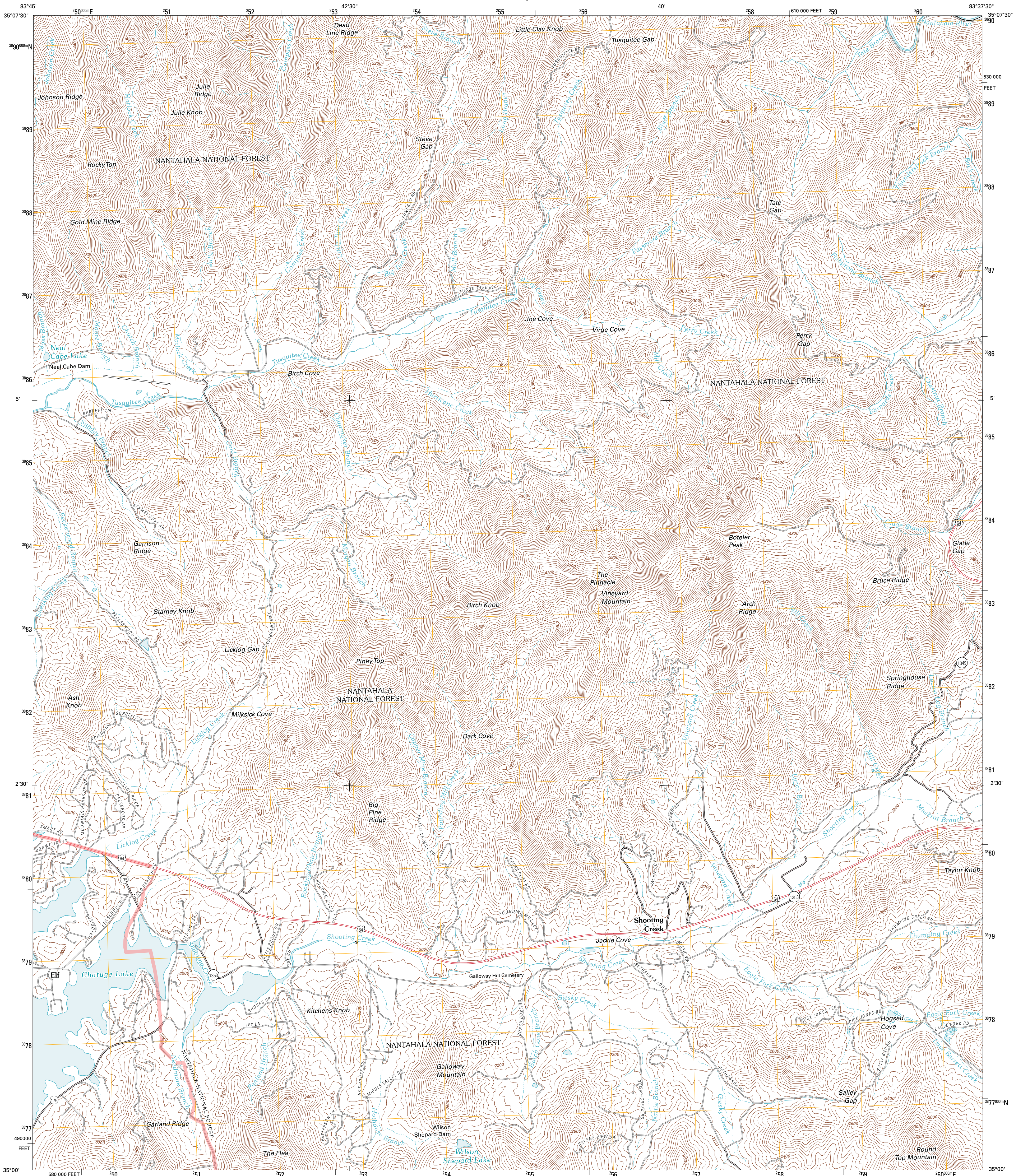




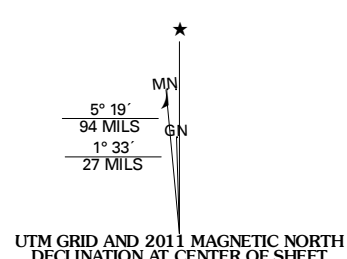
U.S. DEPARTMENT OF THE INTERIOR  
U. S. GEOLOGICAL SURVEY



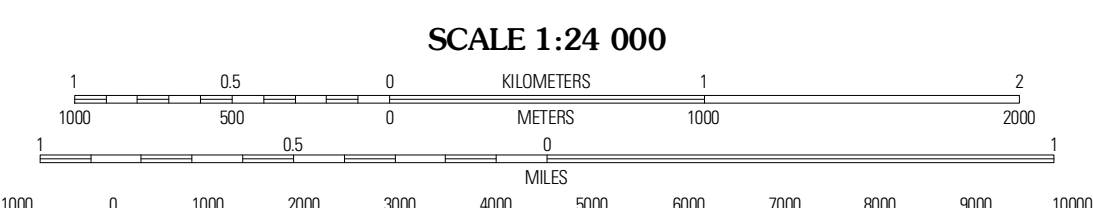
SHOOTING CREEK QUADRANGLE  
NORTH CAROLINA  
7.5-MINUTE SERIES



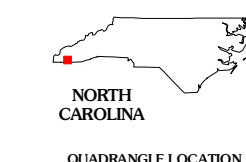
Produced by the United States Geological Survey  
North American Datum of 1983 (NAD83)  
World Geodetic System of 1984 (WGS84). Projection and  
1 000-meter grid. Universal Transverse Mercator, Zone 17S  
10 000-foot ticks: North Carolina Coordinate System of 1983



U.S. National Grid
100,000-m Square ID
KU
Grid Zone Designation
17S



CONTOUR INTERVAL 40 FEET  
NORTH AMERICAN VERTICAL DATUM OF 1988  
This map was produced to conform with version 0.5.10 of the  
draft USGS Standards for 7.5-Minute Quadrangle Maps.  
A metadata file associated with this product is draft version 0.5.12



QUADRANGLE LOCATION

Andrews	Topton	Wajah Bald
Hayesville	Shooting Creek	Rainbow Springs
Hammasee	Macedonia	Hightower Bald

ADJOINING 7.5 QUADRANGLES

ROAD CLASSIFICATION

Interstate Route	State Route
US Route	Local Road
FS Primary Route	FS Passenger Route
FS High Clearance Route	

Check with local Forest Service unit for current travel conditions and restrictions.

SHOOTING CREEK, NC  
2011

Imagery: NAIIP, October 2009  
Roads: ©2006-2010 Tele Atlas  
Roads within US Forest Service Lands: FSTopo Data with limited Forest Service updates, 2009  
Names: CNS, 2010  
Hydrography: National Hydrography Dataset, 2009  
Contours: National Elevation Dataset, 2008