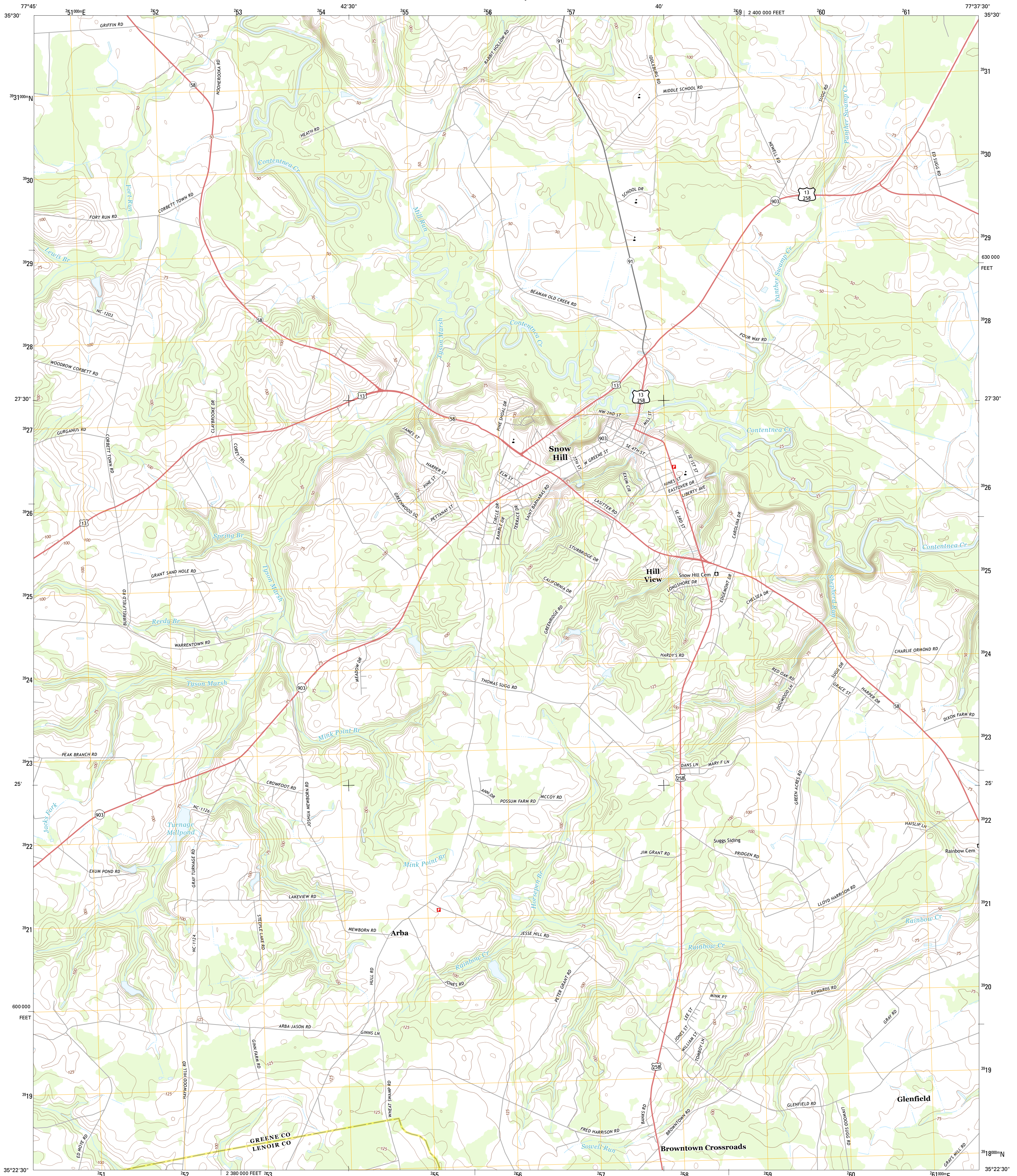




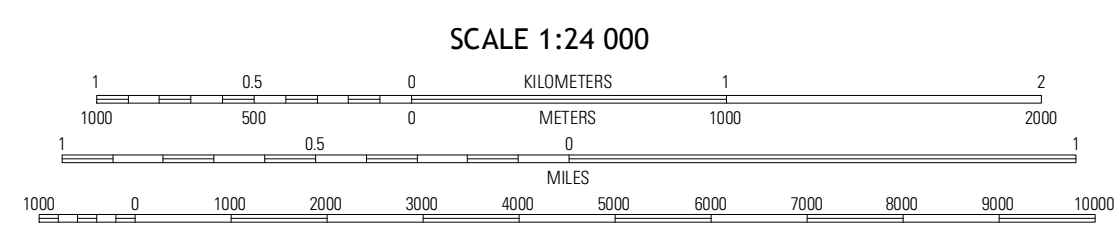
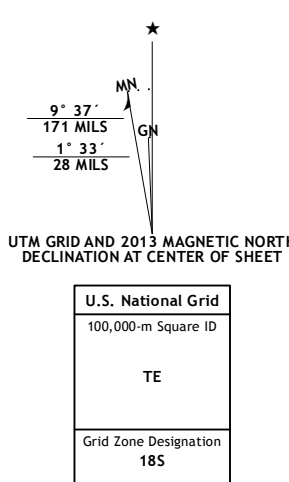
U.S. DEPARTMENT OF THE INTERIOR  
U. S. GEOLOGICAL SURVEY



SNOW HILL QUADRANGLE  
NORTH CAROLINA  
7.5-MINUTE SERIES



Produced by the United States Geological Survey  
North American Datum of 1983 (NAD83)  
World Geodetic System of 1984 (WGS84)  
1:000-meter grid; Universal Transverse Mercator, Zone 18S  
10,000-foot ticks; North Carolina Coordinate System of 1983



QUADRANGLE LOCATION

Rantonsburg	Walstonburg	Farmville
Jason	Show Hill	Hookerton
La Grange	Falling Creek	Kinston

ROAD CLASSIFICATION

Expressway	Local Connector
Secondary Hwy	Local Road
Ramp	4WD
Interstate Route	US Route
	State Route

CONTOUR INTERVAL 5 FEET  
NORTH AMERICAN VERTICAL DATUM OF 1988

This map was produced to conform with the National Geospatial Program US Topo Product Standard, 2011. A metadata file associated with this product is draft version 0.6.11

SNOW HILL, NC  
2013

ADJOINING 7.5 QUADRANGLES