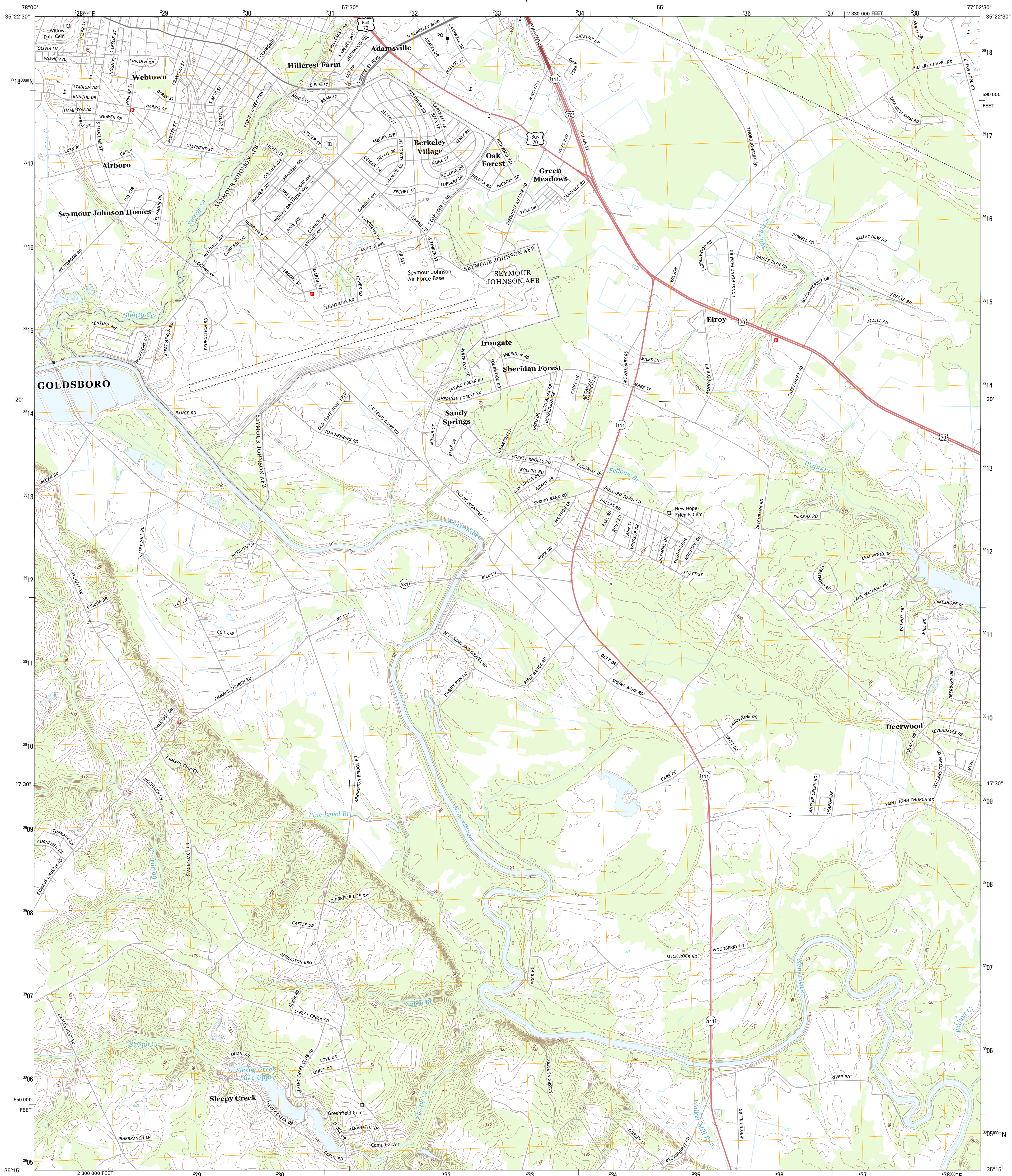




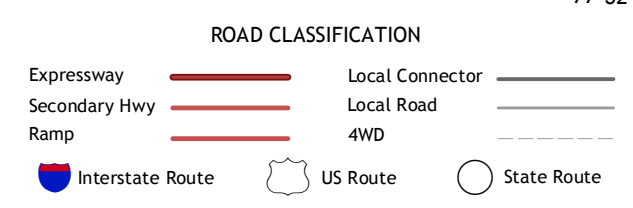
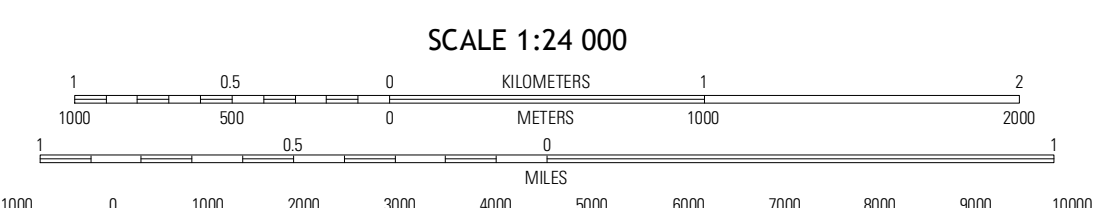
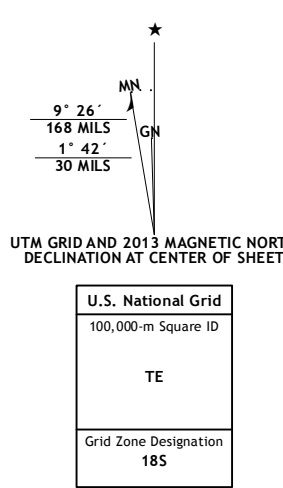
U.S. DEPARTMENT OF THE INTERIOR
U. S. GEOLOGICAL SURVEY



SOUTHEAST GOLDSBORO QUADRANGLE
NORTH CAROLINA-WAYNE CO.
7.5-MINUTE SERIES



Produced by the United States Geological Survey
North American Datum of 1983 (NAD83)
World Geodetic System of 1984 (WGS84) Projection and
1 000-meter grid: Universal Transverse Mercator, Zone 18S
10 000-foot ticks: North Carolina Coordinate System of 1983



QUADRANGLE LOCATION

Northwest Goldsboro	North Goldsboro	Jason
Southwest Goldsboro	Southeast Goldsboro	La Grange
Mount Olive	Williams	Seven Springs

ADJOINING 7.5 QUADRANGLES

CONTOUR INTERVAL 5 FEET
NORTH AMERICAN VERTICAL DATUM OF 1988
This map was produced to conform with the National Geospatial Program US Topo Product Standard, 2011. A metadata file associated with this product is draft version 0.6.11

SOUTHEAST GOLDSBORO, NC
2013